

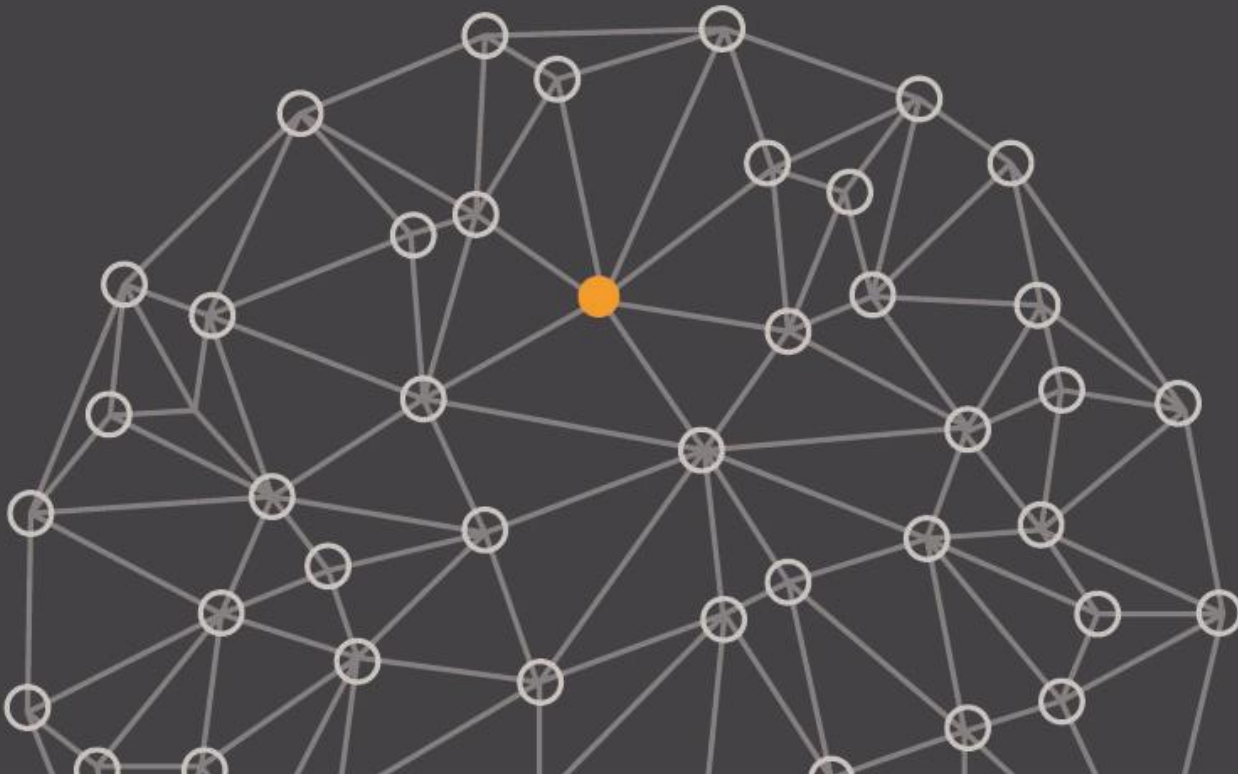
MILLIMAN REPORT

# State of Florida Agency for Health Care Administration

## Impact of 3M™ All Patient Refined Diagnosis Related Groups (APR DRG) Version 38 Updates on Projected Hospital Inpatient Payments

December 21, 2020

Jim Pettersson, CPA  
Luke Roth  
Mitch Johnson, FSA, MAAA  
Nick Bauman, FSA, MAAA





---

## Table of Contents

|  |           |
|--|-----------|
| <b>I. EXECUTIVE SUMMARY .....</b>        | <b>1</b>  |
| <b>II. RESULTS .....</b>                 | <b>2</b>  |
| <b>III. BACKGROUND.....</b>              | <b>5</b>  |
| <b>IV. METHODOLOGY .....</b>             | <b>8</b>  |
| <b>V. DATA SOURCES.....</b>              | <b>10</b> |
| <b>VI. CAVEATS AND LIMITATIONS .....</b> | <b>11</b> |

---

This material assumes that the reader is familiar with the State of Florida’s Medicaid program, Florida Medicaid benefits, and rate setting principles. The material was prepared solely to provide assistance to the Agency in developing a report reflecting the impact of changes to projected hospital inpatient reimbursement, by hospital and in the aggregate, resulting from annual updates to the Diagnosis Related Grouping (DRG) grouper version used in setting inpatient hospital rates. It may not be appropriate for other purposes. Milliman does not intend to benefit, and assumes no duty or liability to, other parties who receive this work. This material should only be reviewed in its entirety.

## I. EXECUTIVE SUMMARY

We have prepared this report to document our analysis of the impact of 3M™ All Patient Refined Diagnosis Related Groups (APR DRG) version 38 updates on inpatient hospital payments, per House Bill (HB) 5001 General Appropriations Act (GAA), as requested by the Florida Agency for Health Care Administration (the Agency).

Per the State Fiscal Year (SFY) 2020-2021 proviso provided to us by the Agency via email on September 26, 2020, “by no later than December 31, 2020, the Agency for Health Care Administration must submit a report reflecting the impact of changes to projected hospital inpatient reimbursement, by hospital and in the aggregate, resulting from annual updates to the Diagnosis Related Grouping (DRG) grouper version used in setting inpatient hospital rates. The report shall be submitted to the Executive Office of the Governor, President of the Senate, and Speaker of the House of Representatives.”

Florida Medicaid currently uses version 37 of the 3M™ APR DRG grouper for inpatient hospital payment purposes. Updating to APR DRG grouper version 38 would impact inpatient hospital payments in the Florida Medicaid program due to specific claims being assigned to a different base APR DRG or severity of illness (SOI) classification using the new grouper version. In addition, 3M™ publishes new relative weights and average lengths of stay with each new grouper version, and because the Florida Medicaid program relies on the relative weights and average lengths of stay published by 3M™ for payment purposes, the updated values published by 3M™ will also impact payments to hospitals.

To estimate the impact of the version 38 updates to the 3M™ APR DRG grouper, we simulated payments for the same set of 523,976 inpatient hospital claims—each representing a hospital stay with date of discharge between January 1, 2018, and December 31, 2018—that the Agency and its vendor used in the development of state fiscal year (SFY) 2020-2021 APR DRG-based reimbursement rates and payment system parameters. We modeled the payments under two scenarios:

- **Scenario 1 (version 37 APR DRG):** Simulated payments based on version 37 APR DRG assignments, 3M™ version 37 APR DRG traditional relative weights (re-centered to Florida Medicaid claims experience) and average lengths of stay, and other SFY 2020-2021 payment system methodologies and parameters documented in the SFY 2020-2021 Florida DRG Calculator (Updated September 14, 2020).
- **Scenario 2 (version 38 APR DRG):** Simulated payments based on version 38 APR DRG assignments, 3M™ version 38 APR DRG traditional relative weights (re-centered to Florida Medicaid claims experience) and average lengths of stay, and while holding all other SFY 2020-2021 payment system methodologies and parameters constant.

**By comparing the simulated payments under these two scenarios, we estimate the aggregate impact of the version 38 updates to the 3M™ APR DRG grouper to be a decrease in DRG-based inpatient hospital payments of approximately \$16.3 million (-0.6%).** The estimated hospital-level impacts vary in direction and magnitude based on the mix of services provided at each hospital. These estimated impacts are provided on an SFY 2020-2021 time period basis to allow for a direct comparison to the current SFY 2020-2021 reimbursement rates.

Because the intent of the analysis described in this report is to evaluate the impact of grouper version changes in isolation, we did not update the DRG base rate or policy adjusters when simulating payments using version 38 APR DRGs. However, in the normal course of modeling annual updates to the DRG based payment system, the DRG base rate and policy adjusters would also be revised to create a budget neutral effect in the aggregate and for specific provider classes and services, unless other budget goals are prescribed by the Florida Legislature.

In the subsequent sections of this report, we provide additional discussion of the results of our analysis, background information on the use of the 3M™ APR DRG grouper for determining inpatient hospital payments in the Florida Medicaid program, and a more detailed discussion of the methodologies, assumptions, and data sources that we relied on to perform our analysis.

---

This material assumes that the reader is familiar with the State of Florida’s Medicaid program, Florida Medicaid benefits, and rate setting principles. The material was prepared solely to provide assistance to the Agency in developing a report reflecting the impact of changes to simulated hospital inpatient reimbursement, by hospital and in the aggregate, resulting from annual updates to the Diagnosis Related Grouping (DRG) grouper version used in setting inpatient hospital rates. It may not be appropriate for other purposes. Milliman does not intend to benefit, and assumes no duty or liability to, other parties who receive this work. This material should only be reviewed in its entirety.

## II. RESULTS

Using the data sources, assumptions, and methodologies described in the subsequent sections of this report, the estimated aggregate impact of the version 38 updates to the 3M™ APR DRG grouper is a reduction in DRG-based inpatient hospital payments of approximately \$16.3 million (-0.6%):

- Simulated DRG base payments decreased by \$10.7 million (-0.5%)
- Simulated DRG outlier payments decreased by \$4.4 million (-1.3%)
- Simulated trauma supplemental payments decreased by \$1.1m (-0.7%)

These estimated impacts are provided on an SFY 2020-2021 time period basis to allow for a direct comparison to the current SFY 2020-2021 reimbursement rates. A summary of the aggregate results is provided in Figure 1, below.

**Figure 1: Estimated Impact of APR DRG Version 38 Grouper Changes on Simulated Hospital Inpatient Payments – Aggregate Results**

| COMPONENT  | APR DRG 37             | APR DRG 38             | DOLLAR IMPACT        | PERCENT IMPACT |
|--|------------------------|------------------------|----------------------|----------------|
| Total Number of Inpatient Stays <sup>(1)</sup>                 | 523,973                | 523,973                |                      |                |
| Total Number of Inpatient Days                                 | 2,234,929              | 2,234,929              |                      |                |
| Trended Billed Charges   | \$29,121,516,402       | \$29,121,516,402       |                      |                |
| Case-mix with Documentation and Coding Improvement (DCI) Trend | 1.01                   | 1.01                   |                      |                |
| <b>Simulated DRG Based Payments</b>                            |                        |                        |                      |                |
| Base Payments  | \$2,236,014,565        | \$2,225,306,491        | -\$10,708,074        | -0.5%          |
| Outlier Payments   | 348,534,354            | 344,105,587            | -4,428,767           | -1.3%          |
| Trauma Supplemental Payments                                   | 164,340,099            | 163,221,836            | -1,118,264           | -0.7%          |
| <b>Total Simulated DRG Based Payments</b>                      | <b>\$2,748,889,019</b> | <b>\$2,732,633,914</b> | <b>-\$16,255,105</b> | <b>-0.6%</b>   |
| <b>Automatic Rate Increase (ARE) Payments<sup>(2)</sup></b>    |                        |                        |                      |                |
| Automatic Rate Increase (ARE) Payments <sup>(2)</sup>          | \$257,792,451          | \$257,792,451          |                      |                |
| <b>Graduate Medical Education (GME) Payments<sup>(2)</sup></b> |                        |                        |                      |                |
| Graduate Medical Education (GME) Payments <sup>(2)</sup>       | 96,982,300             | 96,982,300             |                      |                |
| <b>Total Simulated DRG Based Payments plus GME</b>             | <b>\$3,103,663,769</b> | <b>\$3,103,663,769</b> | <b>-\$16,255,105</b> | <b>-0.5%</b>   |

<sup>1</sup> Three claims that were in the original set of 523,976 inpatient hospital claims that the Agency and its vendor used in the development of SFY 2020-2021 APR DRG based reimbursement rates were removed from our analysis due to data issues that prevented them from being assigned to a valid APR DRG.

<sup>2</sup> Automatic Rate Enhancement (ARE) and Graduate Medical Education (GME) payments are determined outside of the DRG based payment system. For the purposes of this analysis, we relied on ARE and GME payment estimates provided to us by the Agency and its vendor.

This material assumes that the reader is familiar with the State of Florida's Medicaid program, Florida Medicaid benefits, and rate setting principles. The material was prepared solely to provide assistance to the Agency in developing a report reflecting the impact of changes to simulated hospital inpatient reimbursement, by hospital and in the aggregate, resulting from annual updates to the Diagnosis Related Grouping (DRG) grouper version used in setting inpatient hospital rates. It may not be appropriate for other purposes. Milliman does not intend to benefit, and assumes no duty or liability to, other parties who receive this work. This material should only be reviewed in its entirety.

We summarized the results of our analysis for each provider classification, as shown in Figure 2, below, and find that the estimated impact of the version 38 updates to the 3M™ APR DRG grouper on payments for each provider classification are as follows:

- A decrease in payments of approximately \$15.15 million (-0.7%) for All Other hospitals
- A decrease in payments of approximately \$6.35 million (-1.8%) for High Medicaid Volume hospitals
- A decrease in payments of approximately \$0.09 million (-0.8%) for Long Term Acute Care hospitals
- An increase in payments of approximately \$4.90 million (51.5%) for Rehabilitation hospitals
- An increase in payments of approximately \$0.45 million (0.7%) for Rural hospitals

**Figure 2: Estimated Impact of APR DRG Version 38 Grouper Changes on Simulated Hospital Inpatient Payments – Results by Hospital Classification**

| PROVIDER CLASSIFICATION | STAYS          | DAYS             | TRENDED CHARGES         | V37 PAYMENTS <sup>(1)</sup> | V38 PAYMENTS <sup>(1)</sup> | PAYMENT CHANGE (DOLLARS) | PAYMENT CHANGE (PERCENT) |
|-------------------------|----------------|------------------|-------------------------|-----------------------------|-----------------------------|--------------------------|--------------------------|
| All Other               | 494,052        | 2,076,563        | \$26,925,079,253        | \$2,319,564,155             | \$2,304,408,295             | -\$15,155,860            | -0.7%                    |
| High Medicaid Volume    | 16,699         | 104,032          | 1,739,671,144           | 345,824,815                 | 339,473,360                 | -6,351,456               | -1.8%                    |
| Long Term Acute Care    | 360            | 11,635           | 106,444,396             | 11,194,500                  | 11,101,062                  | -93,438                  | -0.8%                    |
| Rehabilitation          | 620            | 7,793            | 26,478,552              | 9,504,421                   | 14,403,030                  | 4,898,609                | 51.5%                    |
| Rural                   | 12,242         | 34,906           | 323,843,057             | 62,801,127                  | 63,248,167                  | 447,040                  | 0.7%                     |
| <b>Total</b>            | <b>523,973</b> | <b>2,234,929</b> | <b>\$29,121,516,402</b> | <b>\$2,748,889,019</b>      | <b>\$2,732,633,914</b>      | <b>-\$16,255,105</b>     | <b>-0.6%</b>             |

<sup>1</sup> Excludes Automatic Rate Enhancement (ARE) and Graduate Medical Education (GME) payments.

We also summarized the results of our analysis for each DRG service line, as shown in Figure 3, below. The five DRG service lines with the greatest percentage changes in simulated payments are:

- Rehabilitation services, with an increase in payments of approximately \$7.4 million (63.0%)
- Mental Health services, with an increase in payments of approximately \$12.0 million (13.9%)
- Normal Newborn services, with a decrease in payments of approximately \$9.7 million (-12.0%)
- Obstetric services, with an increase in payments of approximately \$25.1 million (11.2%)
- Neonatal services, with a decrease in payments of approximately \$39.5 million (-7.0%)

This material assumes that the reader is familiar with the State of Florida's Medicaid program, Florida Medicaid benefits, and rate setting principles. The material was prepared solely to provide assistance to the Agency in developing a report reflecting the impact of changes to simulated hospital inpatient reimbursement, by hospital and in the aggregate, resulting from annual updates to the Diagnosis Related Grouping (DRG) grouper version used in setting inpatient hospital rates. It may not be appropriate for other purposes. Milliman does not intend to benefit, and assumes no duty or liability to, other parties who receive this work. This material should only be reviewed in its entirety.

**Figure 3: Estimated Impact of APR DRG Version 38 Grouper Changes on Simulated Hospital Inpatient Payments – Results by DRG Service Line**

| DRG SERVICE LINE       | STAYS          | DAYS             | TRENDED CHARGES         | V37 PAYMENTS <sup>(1)</sup> | V38 PAYMENTS <sup>(1)</sup> | PAYMENT CHANGE (DOLLARS) | PAYMENT CHANGE (PERCENT) |
|------------------------|----------------|------------------|-------------------------|-----------------------------|-----------------------------|--------------------------|--------------------------|
| Circulatory Adult      | 26,819         | 129,890          | \$2,776,926,542         | \$195,943,878               | \$191,261,207               | -\$4,682,670             | -2.4%                    |
| Gastroenterology Adult | 29,388         | 129,254          | 2,227,744,799           | 147,608,787                 | 144,832,516                 | -2,776,271               | -1.9%                    |
| Mental Health          | 37,439         | 176,242          | 871,836,849             | 86,073,884                  | 98,070,892                  | 11,997,008               | 13.9%                    |
| Miscellaneous Adult    | 101,949        | 658,619          | 10,636,066,301          | 742,292,656                 | 753,190,320                 | 10,897,663               | 1.5%                     |
| Neonate                | 17,409         | 257,947          | 2,914,954,110           | 561,382,097                 | 521,842,868                 | -39,539,229              | -7.0%                    |
| Normal Newborn         | 107,879        | 231,203          | 764,949,001             | 80,719,604                  | 71,045,496                  | -9,674,108               | -12.0%                   |
| Obstetrics             | 120,705        | 297,088          | 3,435,983,620           | 223,502,814                 | 248,560,646                 | 25,057,832               | 11.2%                    |
| Pediatric              | 60,277         | 228,465          | 3,649,963,062           | 555,238,526                 | 545,432,735                 | -9,805,791               | -1.8%                    |
| Rehabilitation         | 1,260          | 15,381           | 114,130,565             | 11,712,199                  | 19,091,244                  | 7,379,045                | 63.0%                    |
| Respiratory Adult      | 20,529         | 102,383          | 1,514,039,444           | 108,720,504                 | 103,972,398                 | -4,748,106               | -4.4%                    |
| Transplant Adult       | 197            | 3,812            | 110,290,198             | 13,097,103                  | 12,633,584                  | -463,518                 | -3.5%                    |
| Transplant Pediatric   | 122            | 4,645            | 104,631,910             | 22,596,967                  | 22,700,008                  | 103,041                  | 0.5%                     |
| <b>Total</b>           | <b>523,973</b> | <b>2,234,929</b> | <b>\$29,121,516,402</b> | <b>\$2,748,889,019</b>      | <b>\$2,732,633,914</b>      | <b>-\$16,255,105</b>     | <b>-0.6%</b>             |

<sup>1</sup> Excludes Automatic Rate Enhancement (ARE) and Graduate Medical Education (GME) payments.

The estimated hospital-level impacts vary in both direction and magnitude based on the mix of services provided at each hospital. Results by individual hospital (or distinct part unit) are provided in the Exhibit that is attached to this report.

This material assumes that the reader is familiar with the State of Florida's Medicaid program, Florida Medicaid benefits, and rate setting principles. The material was prepared solely to provide assistance to the Agency in developing a report reflecting the impact of changes to simulated hospital inpatient reimbursement, by hospital and in the aggregate, resulting from annual updates to the Diagnosis Related Grouping (DRG) grouper version used in setting inpatient hospital rates. It may not be appropriate for other purposes. Milliman does not intend to benefit, and assumes no duty or liability to, other parties who receive this work. This material should only be reviewed in its entirety.

### III. BACKGROUND

The Agency's APR DRG based payment methodology and rates are used to calculate payments for inpatient hospital services provided by all in-state and out-of-state general acute care hospitals, rural hospitals, children's specialty hospitals, teaching hospitals, cancer specialty hospitals, rehabilitation specialty hospitals, and long-term acute care specialty hospitals to fee-for-service (FFS) Medicaid program enrollees. State-owned psychiatric specialty hospitals are excluded from the DRG-based payment system and are instead paid based on a per diem reimbursement rate. Many Florida Medicaid managed care plans establish reimbursement rates for inpatient hospital services based on the Agency's FFS APR DRG reimbursement methodology.

The Agency updates the APR DRG based payment methodology and rates on an annual basis, effective each July 1. These annual updates have included:

- Implementing the most recent version of the APR DRG grouper available
- Revising the APR DRG traditional national weights and average lengths of stay
- Revising other payment system parameters (such as outlier payment parameters), as authorized by the Florida Legislature
- Updating the DRG base rate and policy adjustors to create a budget neutral effect in the aggregate and for specific provider classes and services, unless other budget goals are prescribed by the Florida Legislature

On July 1, 2021, the Agency plans to implement version 38 of the APR DRG grouper, as well as associated revisions to the APR DRG national weights and lengths of stay. Revisions to other payment system parameters and DRG base rates for the July 1, 2021, payment system update will be determined during and adopted through the legislative process.

The grouper changes and the relative weight changes are typically the most impactful changes associated with new APR DRG versions released by 3M™. These changes are described in additional detail below. The updates to the average lengths of stay are less impactful because they are only used for the proration of payments for inpatient hospital stays where the patient is transferred to another acute care hospital.

#### Summary of Version 38 APR DRG Grouper Changes Based on 3M™ Documentation

Each year, on or around October 1, 3M™ releases a new APR DRG grouper version, revising the grouper logic to accommodate changes in the ICD-10-CM diagnosis and ICD-10-PCS procedure code sets and to enhance the clinical precision for APR DRG and SOI classifications based on patient diagnoses, procedures, and other patient-related clinical data.

Along with the release of each new APR DRG grouper version, 3M™ also publishes a companion "Summary of Changes" document.<sup>1</sup> According to the version 38 APR DRG grouper Summary of Changes document, in the update from version 37 to version 38, 3M™ added four new base APR DRGs, deleted two base APR DRGs, and revised one base APR DRG title. In the version 38 APR DRG Summary of Changes document, 3M™ provided the following high-level summary of grouper changes related to the added and deleted base APR DRGs:

"In MDC 8 Diseases and disorders of the musculoskeletal system and connective tissue, four new DRGs were created and two were deleted. The hip and knee replacement DRGs were each split depending on the presence or absence of a complex principal diagnosis (PDX) such as neoplasms, fractures, osteomyelitis, and osteonecrosis."

<sup>1</sup> 3M™ All Patient Refined Diagnosis Related Groups (APR DRG) Summary of Changes version 38.0. Revised 10/2/2020. Retrieved from 3M™ HIS website on October 5, 2020.

This material assumes that the reader is familiar with the State of Florida's Medicaid program, Florida Medicaid benefits, and rate setting principles. The material was prepared solely to provide assistance to the Agency in developing a report reflecting the impact of changes to simulated hospital inpatient reimbursement, by hospital and in the aggregate, resulting from annual updates to the Diagnosis Related Grouping (DRG) grouper version used in setting inpatient hospital rates. It may not be appropriate for other purposes. Milliman does not intend to benefit, and assumes no duty or liability to, other parties who receive this work. This material should only be reviewed in its entirety.



In contrast, according to the Summary of Changes document that 3M™ published as a companion to the version 37 APR DRG grouper, the grouper update from version 36 to version 37 introduced 10 new base APR DRGs, deleted 6 base APR DRGs, and revised 15 base APR DRG titles.<sup>2</sup> In the version 37 APR DRG Summary of Changes document, 3M™ provided the following high-level summary of grouper changes related to the added and deleted base APR DRGs:

“In MDC 1 Diseases and disorders of the nervous system, three new APR DRGs were created, and several others were revised. These changes reflect changes in clinical practice, especially for intracranial and extracranial procedures.

[...]

In MDC 5 Diseases and disorders of the circulatory system, three new APR DRGs were created, and several others were revised. These changes reflect changes in clinical practice, especially for percutaneous procedures, heart assist systems, and defibrillator and pacemaker implants.

[...]

MDC 14 Pregnancy, childbirth and the puerperium has been restructured to provide more precision for antepartum, delivery, and postpartum cases. Four new APR DRGs have been created and five deleted.”

Additionally, in their version 38 APR DRG Summary of Changes document, 3M™ provided a side-by-side comparison of APR DRG versions 37 and 38, which has been reproduced as Figure 4, below. Please note, the effective dates referenced in Figure 2 reflect the dates on which a grouper versions became active according to the 3M™ release schedule. As described previously, the Agency typically implements the new grouper version on the following July 1 to align with the Florida state fiscal year.

**Figure 4: Comparison of APR DRG v37.0 and v38.0**

|   | <b>v37.0</b><br>Effective 10/01/2019 | <b>v38.0</b><br>Effective 10/1/2020 |
|---|--------------------------------------|-------------------------------------|
| Number of base APR DRGs   | 330                                  | 332                                 |
| New base APR DRGs   | 10                                   | 4                                   |
| Deleted base APR DRGs   | 6                                    | 2                                   |
| Revised base APR DRG titles   | 15                                   | 1                                   |
| Severity of illness levels per base APR DRG                             | 4                                    | 4                                   |
| Risk of mortality levels per base APR DRG                               | 4                                    | 4                                   |
| Error APR DRGs  | 2                                    | 2                                   |
| Total APR DRGs  | 1,322                                | 1,330                               |
| Total Major Diagnostic Categories (MDCs)                                | 25                                   | 25                                  |
| Number of procedures changing status from Operating Room (OR) to Non-OR | 8                                    | 58                                  |
| Number of procedures changing status from Non-OR to OR                  | 8                                    | 20                                  |

**Note:** 3M™ introduced v37.1 effective April 1, 2020, in response to the introduction of new ICD-10-CM diagnosis codes U070 Vaping-related disorder and U071 COVID-19. The counts shown in this table were unchanged between v37.0 effective October 1, 2019 and v37.1 effective April 1, 2020.

Source: 3M™ All Patient Refined Diagnosis Related Groups (APR DRG) Summary of Changes version 38.0. Revised on 10/2/2020.

<sup>2</sup> 3M™ All Patient Refined Diagnosis Related Groups (APR DRG) Summary of Changes version 37.0. Revised 10/29/2019. Retrieved from 3M™ HIS website on August 24, 2020.

This material assumes that the reader is familiar with the State of Florida’s Medicaid program, Florida Medicaid benefits, and rate setting principles. The material was prepared solely to provide assistance to the Agency in developing a report reflecting the impact of changes to simulated hospital inpatient reimbursement, by hospital and in the aggregate, resulting from annual updates to the Diagnosis Related Grouping (DRG) grouper version used in setting inpatient hospital rates. It may not be appropriate for other purposes. Milliman does not intend to benefit, and assumes no duty or liability to, other parties who receive this work. This material should only be reviewed in its entirety.

As shown in Figure 4, the number of new, deleted, and revised base APR DRGs that 3M™ implemented in the version 38 grouper update is relatively limited as compared to the number of new, deleted, and revised base APR DRGs that 3M™ implemented in the version 37 grouper update.

### 3M™ APR DRG Relative Weights

3M™ APR DRG relative weights represent the relative average billed charges for inpatient hospital stays assigned to a particular APR DRG relative to the average charges of all inpatient hospital stays. For both version 37 and version 38 of the APR DRG grouper, 3M™ published two sets of relative weights: “traditional” relative weights and Hospital Specific Relative Value (HSRV) relative weights.<sup>3</sup> To compute the HSRV relative weights, 3M™ applies a process of normalizing each hospital’s billed charges based on its case-mix adjusted charge relativity prior to calculating the relative weight for each APR DRG.

The traditional and HSRV relative weights for APR DRG version 37 were calculated by 3M™ using a dataset of approximately 16 million calendar year 2016-2017 inpatient claims from Medicare, Commercial and Medicaid Plan data, Children’s Hospital data and a state dataset.<sup>4</sup> However for version 38 of the APR DRG grouper, the traditional and HSRV relative weights were calculated by 3M™ using a different source of inpatient hospital claims data: approximately 12.9 million inpatient claims from the 2016 and 2017 Agency for Healthcare Research and Quality (AHRQ) Healthcare Cost and Utilization Project (HCUP) National Inpatient Sample (NIS) research datasets.<sup>5</sup> The NIS approximates a 20-percent stratified sample of all discharges from U.S. community hospitals, excluding rehabilitation and long-term acute care hospitals, and contains information on all hospital stays, regardless of the expected payer for the hospital stay.<sup>6</sup> 3M™ had used the NIS data for calculating APR DRG relative weights prior to the national transition from ICD-9 to ICD-10 that occurred on October 1, 2015. Now that two complete years of ICD-10 coded NIS data are available, 3M™ has decided to once again use the NIS for calculating APR DRG relative weights.

Recognizing the impact that the change in source data could have on relative weights across individual APR DRGs, 3M™ published additional sets of “blended” traditional and HSRV relative weights for version 38 APR DRG grouper. Per 3M™ documentation provided with their blended weights, “these blended relative weights take 50% of the HCUP NIS relative weights and 50% of a set of APR DRG v38 relative weights based on the same dataset used to compute the APR DRG v37 relative weights (normalized to the HCUP NIS distribution).”<sup>7</sup>

We have used the traditional relative weights without blending to simulate payments using the version 38 APR DRG grouper for the purposes of the analysis presented in this report. The Agency selected the use of the traditional relative weights without blending for the following reasons:

- To be consistent with the use of the traditional weight sets in prior rate setting periods
- The 2016 and 2017 AHRQ HCUP NIS research datasets provide a more nationally representative set of claims experience for deriving the weights, relative to the dataset that 3M™ used to compute the APR DRG v37 relative weights

<sup>3</sup> Starting with APR DRG version 38, 3M™ began labeling the two weight files as “traditional” (replacing the term “standard”, as was used for prior versions) and Hospital Specific Relative Value (HSRV).

<sup>4</sup> APR DRG v37.0 Weights and Trims - Standard file. Retrieved from 3M™ HIS website on February 3, 2020.

<sup>5</sup> APR DRG v38.0 Weights and Trims - Traditional calculation. Updated 10/23/2020. Retrieved from 3M™ HIS website on November 6, 2020.

<sup>6</sup> For more information, see <https://www.hcup-us.ahrq.gov/nisoverview.jsp>

<sup>7</sup> APR DRG v38.0 Weights and Trims - Traditional calculation. Updated 10/23/2020. Retrieved from 3M™ HIS website on November 6, 2020.

This material assumes that the reader is familiar with the State of Florida’s Medicaid program, Florida Medicaid benefits, and rate setting principles. The material was prepared solely to provide assistance to the Agency in developing a report reflecting the impact of changes to simulated hospital inpatient reimbursement, by hospital and in the aggregate, resulting from annual updates to the Diagnosis Related Grouping (DRG) grouper version used in setting inpatient hospital rates. It may not be appropriate for other purposes. Milliman does not intend to benefit, and assumes no duty or liability to, other parties who receive this work. This material should only be reviewed in its entirety.

## IV. METHODOLOGY

### Base Data Validation and Versions 37 and 38 APR DRG Assignments

To perform the analysis described in this report, we relied on claims data files produced by the Agency and its vendor in the development of SFY 2020-2021 inpatient hospital reimbursement rates and other payment system parameters using the version 37 APR DRG grouper. The claims data files that we relied on contain information for 523,976 claims, with each claim representing a FFS or managed care inpatient hospital stay with date of discharge between January 1, 2018, and December 31, 2018.

The claims data consisted of clinical and administrative information about each inpatient hospital stay, including information required to assign a 3M™ APR DRG to each claim using the 3M™ Core Grouping Software (CGS) and information required to calculate payment according to Florida Medicaid's SFY 2020-2021 APR DRG based payment methodology for inpatient hospital services. After reviewing the data for consistency and completeness, we applied minor edits and adjustments consistent with similar edits and adjustments that were applied in the development of SFY 2020-2021 inpatient hospital reimbursement rates. We applied these edits and adjustments to mitigate APR DRG grouping errors, based on written process documentation developed by the Agency's vendor, as well as additional follow-up written correspondence and meetings with the Agency and its vendor.

After applying these edits and adjustments, we assigned version 37 APR DRGs to the 523,976 claims contained in the claims data files provided by the Agency. We compared our version 37 APR DRG assignments with the version 37 APR DRG assignments that were applied to the claims by the Agency and its vendor in the development of the SFY 2020-2021 rates and found that they were the same for 99.98% of the claims. There were three claims that did not group to a valid APR DRG, which were excluded from subsequent analysis. All other claims were retained in our analytical dataset.

After validating our version 37 APR DRG assignments, we assigned version 38 APR DRGs to the remaining 523,973 claims. In our validation of the version 38 APR DRG assignments, we identified 2,116 claims that did not group to a valid version 38 APR DRG due to an update to the APR DRG grouper logic that requires a birth outcome and birth delivery procedure to be coded when certain childbirth codes that imply a delivery are billed as the primary ICD-10 diagnosis code.<sup>8</sup> We expect that, in response to this change to the version 38 APR DRG grouper logic, hospitals will in the future code a birth outcome and birth delivery procedure when billing a childbirth code that implies delivery as the primary diagnosis code. Therefore, we have assumed that the version 38 APR DRGs that would be assigned to these claims, had the claims been coded with a birth outcome and a birth delivery procedure, are the same as the version 37 APR DRGs assigned to the claims.

We provide additional information about the edits and adjustments that we applied to mitigate APR DRG grouping errors in Appendix A.

### Estimating the Impact of the Version 38 Updates to the 3M™ APR DRG Grouper

To estimate the impact of the version 38 updates to the 3M™ APR DRG grouper, we then simulated payments for the 523,973 inpatient hospital claims under two scenarios:

- **Scenario 1 (version 37 APR DRG):** Simulated payments based on version 37 APR DRG assignments, 3M™ version 37 APR DRG traditional relative weights (re-centered to Florida Medicaid claims experience) and average lengths of stay, and other SFY 2020-2021 payment system methodologies and parameters documented in the SFY 2020-2021 Florida DRG Calculator (Updated September 14, 2020).
- **Scenario 2 (version 38 APR DRG):** Simulated payments based on version 38 APR DRG assignments, 3M™ version 38 APR DRG traditional relative weights (re-centered to Florida Medicaid claims experience) and average lengths of stay, and while holding all other SFY 2020-2021 payment system methodologies and parameters constant.

<sup>8</sup> 3M™ All Patient Refined Diagnosis Related Groups (APR DRG) Summary of Changes version 38.0. Revised 10/2/2020. Retrieved from 3M™ HIS website on October 5, 2020.

This material assumes that the reader is familiar with the State of Florida's Medicaid program, Florida Medicaid benefits, and rate setting principles. The material was prepared solely to provide assistance to the Agency in developing a report reflecting the impact of changes to simulated hospital inpatient reimbursement, by hospital and in the aggregate, resulting from annual updates to the Diagnosis Related Grouping (DRG) grouper version used in setting inpatient hospital rates. It may not be appropriate for other purposes. Milliman does not intend to benefit, and assumes no duty or liability to, other parties who receive this work. This material should only be reviewed in its entirety.

To simulate payments under both scenarios, we relied on rates, methodologies, and other payment system parameters documented in the SFY 2020-2021 Florida DRG Calculator (updated September 14, 2020), as published on the Agency website.<sup>9</sup> To simulate payments under Scenario 1, we also relied on 3M™ version 37 APR DRG relative weights (re-centered to Florida Medicaid claims experience) and average lengths of stay documented in the SFY 2020-2021 Florida DRG Calculator.

To simulate payments under Scenario 2, we also relied on rates, methodologies, and other payment system parameters documented in the SFY 2020-2021 Florida DRG Calculator.<sup>10</sup> However, the version 38 APR DRG relative weights and average lengths of stay were retrieved from the 3M HIS website.<sup>11</sup> We re-centered the version 38 APR DRG relative weights to Florida Medicaid claims experience such that the average re-centered relative weight for the 523,973 inpatient hospital claims analyzed is 1.0, consistent with the methodology described in Florida's State Plan Amendment (SPA), Attachment 4.19A, Section IV.B.3:

“Re-centering the weights involves dividing each DRG’s national relative weight by the average APR-DRG relative weight for a set of Florida Medicaid claims. The result of the re-centering process is a set of weights in which the average relative weight for a Florida Medicaid inpatient hospital stay is 1.0.”

We used the version 38 APR DRG relative weights re-centered to Florida Medicaid claims experience for the purposes of simulating payments under Scenario 2.

For the purposes of simulating payments under both Scenarios 1 and 2, we made the following assumptions and adjustments:

- Applied a 6% annual trend assumption to the calendar year 2018 billed charges to trend the charges to an SFY 2020-2021 basis. We used internal Milliman research and professional judgment to develop this trend assumption.
- Applied a documentation and coding improvement (DCI) trend of 1/3 of 1% per year to APR DRG relative weights re-centered to Florida Medicaid. This trend is consistent with the assumption that “overall Florida Medicaid case mix will increase [...] because of real changes in the average acuity of patients seen in an inpatient setting”, per Florida's SPA, Attachment 4.19A, Section IV.C.5.d. This trend is also consistent with the payment simulation modeling performed by the Agency and its vendor in the development of SFY 2020-2021 APR DRG based reimbursement rates.
- Applied the non-covered days payment adjustment only when the patient was an undocumented non-citizen. This restriction on the application of the non-covered days payment adjustment for the purposes of simulating payments was implemented to address data integrity concerns and is consistent with the payment simulation modeling performed by the Agency and its vendor in the development of SFY 2020-2021 APR DRG based reimbursement rates.
- Exempted claims from Positive Health Care and Prestige Health Choice, as well as claims with total billed charges of less than \$1,000, from simulated charge cap adjustments. This exception was implemented to address data integrity concerns and is consistent with the payment simulation modeling performed by the Agency and its vendor in the development of SFY 2020-2021 APR DRG based reimbursement rates.

---

<sup>9</sup> Available at [https://ahca.myflorida.com/medicaid/cost\\_reim/drg.shtml](https://ahca.myflorida.com/medicaid/cost_reim/drg.shtml). Retrieved on October 15, 2020.

<sup>10</sup> Ibid.

<sup>11</sup> APR DRG v38.0 Weights and Trims - Traditional calculation. Updated 10/23/2020. Retrieved from 3M HIS website on November 6, 2020.

---

This material assumes that the reader is familiar with the State of Florida’s Medicaid program, Florida Medicaid benefits, and rate setting principles. The material was prepared solely to provide assistance to the Agency in developing a report reflecting the impact of changes to simulated hospital inpatient reimbursement, by hospital and in the aggregate, resulting from annual updates to the Diagnosis Related Grouping (DRG) grouper version used in setting inpatient hospital rates. It may not be appropriate for other purposes. Milliman does not intend to benefit, and assumes no duty or liability to, other parties who receive this work. This material should only be reviewed in its entirety.

---

## V. DATA SOURCES

The primary data sources that we relied on to perform the analysis described in this report were claims data files provided to us by the Agency. These claims data files were produced by the Agency and its vendor in the development of SFY 2020-2021 inpatient hospital reimbursement rates and other payment system parameters using the version 37 APR DRG grouper. The claims data files that we relied on contain 523,976 claims records, with each claim representing a FFS or managed care inpatient hospital stay with date of discharge between January 1, 2018, and December 31, 2018.

Based on documentation provided to us by the Agency, we understand that the claims data files provided to us were developed by the Agency and its vendor using FFS claim and managed care encounter records provided by the Bureau of Medicaid Data Analytics (MDA). Further, we understand that in the production of the claims data files that were provided to us, MDA excluded Medicare crossover claims, and the Agency and its vendor applied a number of edits and adjustments to the FFS claim and managed care encounter records provided by MDA. We provide additional information about the edits and adjustments applied by the Agency and its vendor to claims data files on which we relied in Appendix A.

In relying on this data, we reviewed it for reasonableness, but we did not audit or independently reproduce the adjustments or data processing steps performed by the Agency and its vendor.

---

This material assumes that the reader is familiar with the State of Florida's Medicaid program, Florida Medicaid benefits, and rate setting principles. The material was prepared solely to provide assistance to the Agency in developing a report reflecting the impact of changes to simulated hospital inpatient reimbursement, by hospital and in the aggregate, resulting from annual updates to the Diagnosis Related Grouping (DRG) grouper version used in setting inpatient hospital rates. It may not be appropriate for other purposes. Milliman does not intend to benefit, and assumes no duty or liability to, other parties who receive this work. This material should only be reviewed in its entirety.

## VI. CAVEATS AND LIMITATIONS

We prepared this report for the specific purpose of documenting our findings, methodologies, and assumptions for estimating the impact of APR DRG version 38 grouper changes on simulated hospital inpatient reimbursement by hospital and in the aggregate, per HB 5001 GAA, as requested by the Florida Agency for Health Care Administration (the Agency). This report may not be appropriate, and should not be used, for other purposes.

This report is intended solely for the use and benefit of the Agency, and it is only to be relied upon by the Agency. Milliman recognizes that materials it delivers to the Agency may be public records subject to disclosure to third parties; however, Milliman does not intend to benefit, and assumes no duty or liability to, parties other than the Agency who receive this work. We understand that this report will be shared with the Executive Office of the Governor, President of the Senate, and Speaker of the House of Representatives. This material should only be distributed and reviewed in its entirety.

In preparing this material, we relied on several sources of data and information from Managed Medical Assistance (MMA) plans, the Agency, Guidehouse (the Agency's vendor for developing SFY 2020-2021 inpatient hospital rates), and other sources. Those data sources and information include Agency FFS claims data and FMMIS encounter data processed by Guidehouse, as well as other supporting information from the Agency and Guidehouse. We relied on the Agency for the accuracy of the FFS claims data and other supporting information, and for the collection and processing of the FMMIS encounter data. We relied on the MMA plans to provide accurate encounter data as certified by the plan, as well as accurate follow-up information. We also relied on Guidehouse to provide accurate claims data that they processed for the purposes of setting SFY 2020-2021 inpatient hospital rates. **We did not audit any of the data sources or other information.** but we did assess the data and information for reasonableness. If the data or other information used is inadequate or incomplete, the results will be likewise inadequate or incomplete.

Milliman has developed certain models to estimate the values included in this report. The intent of the models was to estimate the impact of APR DRG version 38 grouper changes on simulated hospital inpatient reimbursement by hospital and in the aggregate, per HB 5001 GAA, as requested by the Agency. We have reviewed the models, including their inputs, calculations, and outputs for consistency, reasonableness, and appropriateness to the intended purpose and in compliance with generally accepted actuarial practice and relevant actuarial standards of practice (ASOPs). The models, including all input, calculations, and output, may not be appropriate for any other purpose.

Actual hospital inpatient reimbursement will differ from the simulated estimates included in this report due to differences in health care trend, managed care efficiency, enrollment demographic changes, changes in hospital charge masters, the impact of the COVID-19 pandemic, and many other factors. It is certain that actual experience will not conform exactly to the assumptions used. Actual amounts will differ from simulated amounts to the extent that actual experience is better or worse than expected.

The results of this report are technical in nature and are dependent upon specific assumptions and methods. No party should rely on these results without a thorough understanding of those assumptions and methods. Such an understanding may require consultation with qualified professionals.

Guidelines issued by the American Academy of Actuaries require actuaries to include their professional qualifications in all actuarial communications. Nick Bauman and Mitch Johnson are actuaries at Milliman, are members of the American Academy of Actuaries, and meet the Qualification Standards of the Academy to render the actuarial communication contained herein. To the best of our knowledge and belief, this communication is complete and accurate and has been prepared in accordance with generally recognized and accepted actuarial principles and practices.

Reports are produced, in part, by using 3M Company's proprietary computer software created, owned and licensed by 3M Company. All copyrights in and to the 3M™ Software are owned by 3M Company or its affiliates. All rights reserved.

This report is subject to the terms and conditions of the October 22, 2014, contract between the Agency and Milliman.

---

This material assumes that the reader is familiar with the State of Florida's Medicaid program, Florida Medicaid benefits, and rate setting principles. The material was prepared solely to provide assistance to the Agency in developing a report reflecting the impact of changes to simulated hospital inpatient reimbursement, by hospital and in the aggregate, resulting from annual updates to the Diagnosis Related Grouping (DRG) grouper version used in setting inpatient hospital rates. It may not be appropriate for other purposes. Milliman does not intend to benefit, and assumes no duty or liability to, other parties who receive this work. This material should only be reviewed in its entirety.

## EXHIBITS

*(Exhibit also provided in Excel format)*

---

This material assumes that the reader is familiar with the State of Florida's Medicaid program, Florida Medicaid benefits, and rate setting principles. The material was prepared solely to provide assistance to the Agency in developing a report reflecting the impact of changes to simulated hospital inpatient reimbursement, by hospital and in the aggregate, resulting from annual updates to the Diagnosis Related Grouping (DRG) grouper version used in setting inpatient hospital rates. It may not be appropriate for other purposes. Milliman does not intend to benefit, and assumes no duty or liability to, other parties who receive this work. This material should only be reviewed in its entirety.

**State of Florida Agency for Health Care Administration**  
Impact of 3M™ APR DRG Version 38 Updates on Projected Hospital Inpatient Payments

---

December 21, 2020



**State of Florida Medicaid - Agency for Health Care Administration (Agency)  
 Impact of 3M™ APR DRG Version 38 Updates on Simulated Hospital Inpatient Payments  
 July 2020 Through June 2021 (SFY 2020-2021) Hospital Payment Rates  
 Simulated Payments and Impacts by Hospital**

|           |                      |   |                  | Simulated Payments Based on Version 37 APR DRGs |                  |                         |                         |                         |                        |                         |                              |   |  |                     |                        |                                |
|-----------|----------------------|---|------------------|---|------------------|-------------------------|-------------------------|-------------------------|------------------------|-------------------------|------------------------------|---|--|---------------------|------------------------|--------------------------------|
|           |                      |   |                  | (A)   | (B)              | (C)                     | (D) = (A) + (B) + (C)   |                         | (E)                    | (F)                     | (G) = (D) + (E) + (F)        |   | (H) = (B) / (G)                          |                     |                        |                                |
| County    | Provider Medicaid ID | Provider Name   | Pricing Category | Stays   | Days             | Trended Charges         | V37 Casemix Re-centered | V37 Casemix w DCI Trend | V37 DRG Base Payment   | V37 DRG Outlier Payment | V37 DRG Trauma Supp. Payment | V37 Total DRG Payment - Excl. GME & ARE | Automatic Rate Enhancement (ARE) Payment | GME Payment         | V37 Payment Total      | V37 Outlier Payment Percentage |
|           |                      |   |                  | <b>523,973</b>                                  | <b>2,234,929</b> | <b>\$29,121,516,402</b> | <b>1.00</b>             | <b>1.01</b>             | <b>\$2,236,014,565</b> | <b>\$348,534,354</b>    | <b>\$164,340,099</b>         | <b>\$2,748,889,019</b>                  | <b>\$257,792,451</b>                     | <b>\$96,982,300</b> | <b>\$3,103,663,769</b> | <b>11.2%</b>                   |
| Alachua   | 010003000            | UF Health Shands Hospital                                       | All Other        | 13,710  | 67,221           | \$738,739,146           | 1.63                    | 1.65                    | \$102,416,043          | \$16,891,902            | \$17,416,266                 | \$136,724,212                           | \$23,063,730                             | \$9,120,003         | \$168,907,945          | 10.0%                          |
| Alachua   | 010377200            | Select Specialty Hospital - Gainesville                         | LTAC             | 5   | 98               | 482,355                 | 2.67                    | 2.69                    | 95,966                 | -                       | -                            | 95,966                                  | -  | -                   | 95,966                 | 0.0%                           |
| Alachua   | 010862600            | North Florida Regional Medical Center                           | All Other        | 5,008   | 16,528           | 258,101,169             | 0.78                    | 0.79                    | 14,122,808             | 601,521                 | -                            | 14,724,329                              | -  | 1,920,289           | 16,644,618             | 3.6%                           |
| Alachua   | 103449400            | UF Health Rehab Hospital  | Rehab            | 48  | 446              | 1,982,593               | 1.00                    | 1.01                    | 688,289                | -                       | -                            | 688,289                                 | -  | -                   | 688,289                | 0.0%                           |
| Baker     | 010004800            | Ed Fraser Memorial Hospital                                     | Rural            | 19  | 71               | 544,734                 | 0.77                    | 0.77                    | 102,413                | -                       | -                            | 102,413                                 | -  | -                   | 102,413                | 0.0%                           |
| Bay       | 010006400            | Ascension Sacred Heart Bay                                      | All Other        | 1,245   | 5,725            | 57,533,582              | 1.31                    | 1.32                    | 5,692,537              | 170,812                 | 626,179                      | 6,489,527                               | -  | -                   | 6,489,527              | 2.6%                           |
| Bay       | 010275000            | Encompass Health Rehabilitation Hospital of Panama City         | Rehab            | 16  | 155              | 320,939                 | 1.06                    | 1.07                    | 247,650                | -                       | -                            | 247,650                                 | -  | -                   | 247,650                | 0.0%                           |
| Bay       | 010343800            | Select Specialty Hospital - Panama City                         | LTAC             | 8   | 102              | 1,254,498               | 2.04                    | 2.06                    | 124,538                | 21,290                  | -                            | 145,827                                 | -  | -                   | 145,827                | 14.6%                          |
| Bay       | 011761700            | Gulf Coast Regional Medical Center                              | All Other        | 4,162   | 10,807           | 154,857,405             | 0.84                    | 0.85                    | 14,385,030             | 132,162                 | -                            | 14,517,192                              | 309,996                                  | -                   | 14,827,187             | 0.9%                           |
| Bradford  | 010007200            | North Florida Regional Medical Center Starke Campus             | Rural            | 108   | 376              | 3,432,666               | 0.89                    | 0.90                    | 756,949                | -                       | -                            | 756,949                                 | -  | -                   | 756,949                | 0.0%                           |
| Brevard   | 001681500            | Kindred Hospital Melbourne                                      | LTAC             | 7   | 174              | 1,127,866               | 3.02                    | 3.04                    | 153,538                | -                       | -                            | 153,538                                 | -  | -                   | 153,538                | 0.0%                           |
| Brevard   | 003158800            | Viera Hospital  | All Other        | 150   | 860              | 9,288,954               | 1.31                    | 1.32                    | 657,680                | 177,571                 | -                            | 835,251                                 | -  | -                   | 835,251                | 21.3%                          |
| Brevard   | 003297500            | Palm Bay Hospital   | All Other        | 531   | 2,392            | 25,837,679              | 1.24                    | 1.26                    | 2,278,016              | 169,781                 | -                            | 2,447,797                               | -  | -                   | 2,447,797              | 6.9%                           |
| Brevard   | 010008100            | Holmes Regional Medical Center                                  | All Other        | 4,784   | 18,188           | 182,552,660             | 0.87                    | 0.88                    | 15,482,676             | 1,425,585               | 1,703,094                    | 18,611,355                              | -  | -                   | 18,611,355             | 7.7%                           |
| Brevard   | 010009900            | Cape Canaveral Hospital   | All Other        | 1,347   | 4,212            | 35,546,855              | 0.70                    | 0.70                    | 3,313,335              | 103,475                 | -                            | 3,416,811                               | -  | -                   | 3,416,811              | 3.0%                           |
| Brevard   | 010010200            | Parrish Medical Center  | All Other        | 1,359   | 3,960            | 33,273,909              | 0.70                    | 0.71                    | 3,332,280              | 42,356                  | -                            | 3,374,636                               | -  | -                   | 3,374,636              | 1.3%                           |
| Brevard   | 010011100            | Rockledge Regional Medical Center                               | All Other        | 1,543   | 4,866            | 76,106,028              | 0.83                    | 0.84                    | 4,495,744              | 37,992                  | -                            | 4,533,736                               | -  | -                   | 4,533,736              | 0.8%                           |
| Brevard   | 010320900            | Melbourne Regional Medical Center                               | All Other        | 162   | 571              | 17,486,754              | 1.51                    | 1.53                    | 830,485                | 29,481                  | -                            | 859,967                                 | -  | -                   | 859,967                | 3.4%                           |
| Brevard   | 012042100            | Sea Pines Rehabilitation Hospital Affiliate of Encompass Health | Rehab            | 20  | 264              | 599,575                 | 0.97                    | 0.98                    | 269,770                | -                       | -                            | 269,770                                 | -  | -                   | 269,770                | 0.0%                           |
| Broward   | 010012900            | Broward Health Medical Center                                   | All Other        | 9,823   | 55,733           | 444,652,744             | 1.02                    | 1.03                    | 43,124,695             | 10,130,739              | 7,360,238                    | 60,615,671                              | 16,840,310                               | 2,345,919           | 79,801,900             | 12.7%                          |
| Broward   | 010018800            | Holy Cross Hospital   | All Other        | 1,472   | 7,682            | 60,214,009              | 1.03                    | 1.04                    | 5,233,718              | 777,852                 | -                            | 6,011,570                               | -  | 1,116,136           | 7,127,706              | 10.9%                          |
| Broward   | 010019600            | Kindred Hospital-South Florida-Ft Lauderdale                    | LTAC             | 10  | 270              | 2,352,010               | 3.08                    | 3.11                    | 234,982                | 33,905                  | -                            | 268,886                                 | -  | -                   | 268,886                | 12.6%                          |
| Broward   | 010020000            | Memorial Regional Hospital                                      | All Other        | 11,296  | 68,253           | 991,367,603             | 1.28                    | 1.29                    | 69,513,853             | 16,124,371              | 11,828,313                   | 97,466,538                              | 13,577,787                               | 473,038             | 111,517,363            | 14.5%                          |
| Broward   | 010021800            | Broward Health North  | All Other        | 1,696   | 12,426           | 115,779,278             | 1.41                    | 1.42                    | 8,373,843              | 3,754,507               | 921,561                      | 13,049,912                              | -  | -                   | 13,049,912             | 28.8%                          |
| Broward   | 010191500            | Kindred Hospital-South Florida-Hollywood                        | LTAC             | 20  | 587              | 5,657,181               | 3.59                    | 3.63                    | 547,809                | 213,629                 | -                            | 761,438                                 | -  | -                   | 761,438                | 28.1%                          |
| Broward   | 010220200            | Cleveland Clinic Hospital                                       | All Other        | 187   | 1,274            | 14,167,712              | 1.97                    | 1.99                    | 1,280,801              | 229,860                 | -                            | 1,510,662                               | -  | 1,691,459           | 3,202,121              | 7.2%                           |
| Broward   | 010229900            | Memorial Hospital Pembroke                                      | All Other        | 988   | 4,499            | 71,766,799              | 1.13                    | 1.14                    | 3,875,575              | 392,358                 | -                            | 4,267,933                               | -  | -                   | 4,267,933              | 9.2%                           |
| Broward   | 010240700            | St. Anthony's Rehabilitation Hospital                           | Rehab            | 3   | 37               | 90,156                  | 1.24                    | 1.25                    | 55,968                 | -                       | -                            | 55,968                                  | -  | -                   | 55,968                 | 0.0%                           |
| Broward   | 010252100            | Memorial Hospital West  | All Other        | 4,713   | 18,789           | 276,854,593             | 0.84                    | 0.85                    | 14,369,293             | 2,111,815               | -                            | 16,481,108                              | 411,877                                  | -                   | 16,892,985             | 12.5%                          |
| Broward   | 010345400            | Memorial Hospital Miramar                                       | All Other        | 3,495   | 9,835            | 98,109,314              | 0.51                    | 0.51                    | 6,708,168              | 155,813                 | -                            | 6,863,981                               | -  | -                   | 6,863,981              | 2.3%                           |
| Broward   | 010459100            | Northwest Medical Center  | All Other        | 2,876   | 13,184           | 233,293,033             | 1.03                    | 1.04                    | 12,416,083             | 140,349                 | -                            | 12,556,432                              | -  | -                   | 12,556,432             | 1.1%                           |
| Broward   | 010821900            | Broward Health Imperial Point                                   | All Other        | 1,070   | 7,001            | 40,800,752              | 1.02                    | 1.03                    | 3,816,264              | 262,861                 | -                            | 4,079,125                               | -  | -                   | 4,079,125              | 6.4%                           |
| Broward   | 011230500            | Westside Regional Medical Center                                | All Other        | 857   | 4,729            | 124,774,005             | 1.59                    | 1.61                    | 4,693,305              | 543,815                 | -                            | 5,237,121                               | -  | -                   | 5,237,121              | 10.4%                          |
| Broward   | 011280100            | University Hospital and Medical Center                          | All Other        | 1,418   | 7,657            | 93,209,777              | 0.76                    | 0.77                    | 3,980,334              | 5,964                   | -                            | 3,986,298                               | -  | 380,152             | 4,366,450              | 0.1%                           |
| Broward   | 012000600            | Plantation General Hospital                                     | All Other        | 8,501   | 37,941           | 611,414,691             | 0.87                    | 0.88                    | 30,303,369             | 2,821,302               | -                            | 33,124,671                              | 332,435                                  | -                   | 33,457,106             | 8.4%                           |
| Broward   | 012027800            | Encompass Health Rehabilitation Hospital of Sunrise             | Rehab            | 33  | 626              | 1,636,025               | 0.96                    | 0.97                    | 435,054                | 20,227                  | -                            | 455,280                                 | -  | -                   | 455,280                | 4.4%                           |
| Broward   | 012040500            | Broward Health Coral Springs                                    | All Other        | 3,552   | 12,884           | 76,904,925              | 0.63                    | 0.63                    | 8,319,207              | 522,039                 | -                            | 8,841,246                               | 2,089,627                                | 91,408              | 11,022,281             | 4.7%                           |
| Broward   | 016972100            | St John's Rehabilitation Hospital                               | All Other        | 36  | 423              | 1,159,892               | 0.97                    | 0.98                    | 121,223                | -                       | -                            | 121,223                                 | -  | -                   | 121,223                | 0.0%                           |
| Calhoun   | 010026900            | Calhoun-Liberty Hospital  | Rural            | 22  | 56               | 183,400                 | 0.72                    | 0.72                    | 120,651                | -                       | -                            | 120,651                                 | 3,131                                    | -                   | 123,782                | 0.0%                           |
| Charlotte | 010027700            | Bayfront Health Punta Gorda                                     | All Other        | 443   | 2,461            | 24,508,175              | 0.95                    | 0.96                    | 1,508,141              | 51,905                  | -                            | 1,560,046                               | -  | -                   | 1,560,046              | 3.3%                           |
| Charlotte | 010028500            | Bayfront Health Port Charlotte                                  | All Other        | 2,068   | 5,427            | 81,333,392              | 0.64                    | 0.64                    | 4,855,373              | 20,072                  | -                            | 4,875,445                               | -  | -                   | 4,875,445              | 0.4%                           |
| Charlotte | 011746300            | Fawcett Memorial Hospital                                       | All Other        | 486   | 3,813            | 80,937,989              | 1.78                    | 1.79                    | 3,006,529              | 327,958                 | -                            | 3,334,487                               | -  | -                   | 3,334,487              | 9.8%                           |
| Citrus    | 010219900            | Citrus Memorial Hospital  | All Other        | 1,295   | 3,791            | 85,875,493              | 0.85                    | 0.85                    | 3,840,451              | 9,721                   | -                            | 3,850,173                               | -  | 256,548             | 4,106,721              | 0.2%                           |
| Citrus    | 011998900            | Bayfront Health Seven Rivers                                    | All Other        | 840   | 1,980            | 37,909,196              | 0.73                    | 0.74                    | 2,138,779              | 29,250                  | -                            | 2,168,029                               | -  | -                   | 2,168,029              | 1.3%                           |
| Clay      | 009701300            | Ascension St. Vincent's Clay County                             | All Other        | 1,142   | 2,833            | 27,973,933              | 0.69                    | 0.69                    | 2,728,255              | -                       | -                            | 2,728,255                               | -  | -                   | 2,728,255              | 0.0%                           |
| Clay      | 010267900            | Kindred Hospital-North Florida                                  | LTAC             | 12  | 689              | 4,879,279               | 2.71                    | 2.73                    | 245,598                | 264,867                 | -                            | 510,465                                 | -  | -                   | 510,465                | 51.9%                          |
| Clay      | 011174100            | Orange Park Medical Center                                      | All Other        | 4,686   | 17,725           | 364,503,713             | 0.91                    | 0.92                    | 16,218,407             | 115,998                 | 1,784,446                    | 18,118,852                              | -  | 1,243,905           | 19,362,757             | 0.6%                           |
| Collier   | 010031500            | Naples Community Hospital                                       | All Other        | 5,467   | 18,035           | 117,168,418             | 0.67                    | 0.67                    | 13,399,332             | 544,424                 | -                            | 13,943,756                              | -  | 443,630             | 14,387,386             | 3.8%                           |
| Collier   | 010314400            | Physicians Regional Medical Center - Pine Ridge                 | All Other        | 442   | 1,782            | 45,949,549              | 1.38                    | 1.39                    | 2,136,775              | 234,863                 | -                            | 2,371,638                               | -  | -                   | 2,371,638              | 9.9%                           |
| Collier   | 016431100            | Landmark Hospital of Southwest Florida                          | LTAC             | 6   | 61               | 1,260,839               | 2.30                    | 2.31                    | 89,162                 | -                       | -                            | 89,162                                  | -  | -                   | 89,162                 | 0.0%                           |
| Columbia  | 010033100            | Shands Lake Shore Rgnt Med Cntr                                 | Rural            | 1,473   | 3,189            | 34,160,077              | 0.45                    | 0.45                    | 5,206,962              | 7,249                   | -                            | 5,214,211                               | -  | -                   | 5,214,211              | 0.1%                           |
| Columbia  | 011976800            | Lake City Medical Center  | All Other        | 409   | 1,070            | 18,217,535              | 1.02                    | 1.03                    | 1,456,313              | -                       | -                            | 1,456,313                               | -  | -                   | 1,456,313              | 0.0%                           |
| Dade      | 003226500            | West Kendall Baptist Hospital                                   | All Other        | 1,723   | 4,914            | 57,984,540              | 0.62                    | 0.63                    | 3,850,742              | 307,953                 | -                            | 4,158,695                               | -  | 222,408             | 4,381,103              | 7.0%                           |
| Dade      | 009728200            | Mercy Hospital  | All Other        | 100   | 458              | 1,946,272               | 0.75                    | 0.75                    | 261,024                | -                       | -                            | 261,024                                 | -  | -                   | 261,024                | 0.0%                           |
| Dade      | 010035800            | Baptist Hospital of Miami                                       | All Other        | 4,855   | 25,228           | 341,592,020             | 1.05                    | 1.06                    | 20,270,328             | 7,145,751               | -                            | 27,416,079                              | -  | -                   | 27,416,079             | 26.1%                          |
| Dade      | 010041200            | Hialeah Hospital  | All Other        | 4,141   | 13,601           | 200,739,008             | 0.65                    | 0.66                    | 9,663,760              | 585,722                 | -                            | 10,249,481                              | 475,473                                  | -                   | 10,724,954             | 5.5%                           |
| Dade      | 010042100            | Jackson Memorial Hospital                                       | All Other        | 25,350  | 151,520          | 1,439,390,250           | 1.27                    | 1.28                    | 129,022,590            | 42,953,209              | 22,084,463                   | 194,060,181                             | 63,870,752                               | 12,359,550          | 270,290,483            | 15.9%                          |
| Dade      | 010046300            | Mount Sinai Medical Center                                      | All Other        | 3,447   | 16,806           | 148,104,244             | 0.87                    | 0.88                    | 11,024,498             | 1,350,302               | -                            | 12,374,801                              | -  | 2,431,962           | 14,806,763             | 9.1%                           |
| Dade      | 010047100            | University of Miami Hospital and Clinics                        | All Other        | 2,308   | 14,557           | 280,877,299             | 1.65                    | 1.66                    | 13,999,597             | 3,762,427               | -                            | 17,762,025                              | -  | 3,184,978           | 20,347,003             | 18.5%                          |
| Dade      | 010049800            | North Shore Medical Center                                      | All Other        | 6,907   | 29,819           | 459,901,267             | 0.90                    | 0.90                    | 23,154,545             | 2,426,991               | -                            | 25,581,536                              | 603,831                                  | -                   | 26,185,367             | 9.3%                           |
| Dade      | 010053600            | Larkin Community Hospital Palm Springs Campus                   | All Other        | 366   | 2,287            | 17,667,472              | 1.15                    | 1.16                    | 1,487,953              | 211,487                 | -                            | 1,699,451                               | -  | 1,096,491           | 2,795,942              | 7.6%                           |
| Dade      | 010058700            | South Miami Hospital  | All Other        | 3,800   | 15,881           | 193,947,146             | 1.02                    | 1.03                    | 18,082,917             | 3,560,487               | -                            | 21,643,404                              | -  | -                   | 21,643,404             | 16.5%                          |
| Dade      | 010060900            | Nicklaus Children's Hospital                                    | High Mcaid       | 5,833   | 36,693           | 594,694,692             | 1.61                    | 1.62                    | 71,329,778             | 42,961,997              | 2,854,912                    | 117,146,688                             | 24,876,728                               | 2,681,579           | 144,704,994            | 29.7%                          |
| Dade      | 010062500            | Westchester General Hospital                                    | All Other        | 541   | 2,945            | 12,256,852              | 0.80                    | 0.80                    | 1,503,525              | 31,243                  | -                            | 1,534,767                               | -  | 224,422             | 1,860,315              | 1.7%                           |
| Dade      | 010170200            | West Gables Rehabilitation Hospital                             | Rehab            | 140   | 1,823            | 6,051,878               | 1.16                    | 1.17                    | 2,223,872              | 4,147                   | -                            | 2,228,019                               | -  | -                   | 2,228,019              | 0.2%                           |
| Dade      | 010226100            | Homestead Hospital  | All Other        | 3,354   | 8,645            | 106,565,532             | 0.64                    | 0.64                    | 7,596,397              | 643,569                 | -                            | 8,239,965                               | 4,384,713                                | -                   | 12,624,678             | 5.1%                           |
| Dade      | 010270900            | Encompass Health Rehabilitation Hospital of Miami               | Rehab            | 27  | 329              | 956,235                 | 0.95                    | 0.96                    | 355,157                | 19,351                  | -                            | 374                                     |  |                     |                        |                                |



State of Florida Medicaid - Agency for Health Care Administration (Agency)  
 Impact of 3M™ APR DRG Version 38 Updates on Simulated Hospital Inpatient Payments  
 July 2020 Through June 2021 (SFY 2020-2021) Hospital Payment Rates  
 Simulated Payments and Impacts by Hospital

|              |                      |   |                  |        |        |                 |                         |                         |                      |                         |                              |   |  | Simulated Payments Based on Version 37 APR DRGs |                   |                                |                       |     |     |                       |                 |
|--------------|----------------------|---|------------------|--------|--------|-----------------|-------------------------|-------------------------|----------------------|-------------------------|------------------------------|---|--|---|-------------------|--------------------------------|-----------------------|-----|-----|-----------------------|-----------------|
|              |                      |   |                  |        |        |                 |                         |                         |                      |                         |                              |   |  | (A)   | (B)               | (C)                            | (D) = (A) + (B) + (C) | (E) | (F) | (G) = (D) + (E) + (F) | (H) = (B) / (G) |
| County       | Provider Medicaid ID | Provider Name   | Pricing Category | Stays  | Days   | Trended Charges | V37 Casemix Re-centered | V37 Casemix w DCI Trend | V37 DRG Base Payment | V37 DRG Outlier Payment | V37 DRG Trauma Supp. Payment | V37 Total DRG Payment - Excl. GME & ARE | Automatic Rate Enhancement (ARE) Payment | GME Payment                                     | V37 Payment Total | V37 Outlier Payment Percentage |                       |     |     |                       |                 |
| Escambia     | 010076500            | Ascension Sacred Heart Pensacola                              | All Other        | 7,477  | 36,408 | 264,003,651     | 1.02                    | 1.03                    | 33,823,271           | 2,548,919               | 3,720,560                    | 40,092,750                              | 7,519,149                                | 1,108,062                                       | 48,719,961        | 5.2%                           |                       |     |     |                       |                 |
| Escambia     | 010368300            | Select Specialty Hospital - Pensacola                         | LTAC             | 15     | 356    | 2,149,921       | 2.21                    | 2.23                    | 252,223              | 7,220                   | -                            | 259,443                                 | -  | -   | 259,443           | 2.8%                           |                       |     |     |                       |                 |
| Escambia     | 011321200            | West Florida Hospital   | All Other        | 2,536  | 10,229 | 133,993,871     | 0.85                    | 0.85                    | 7,752,742            | -                       | -                            | 7,752,742                               | -  | -   | 7,752,742         | 0.0%                           |                       |     |     |                       |                 |
| Flagler      | 010189300            | AdventHealth Palm Coast                                       | Rural            | 484    | 2,296  | 22,892,261      | 1.34                    | 1.35                    | 4,990,359            | -                       | -                            | 4,990,359                               | -  | -   | 4,990,359         | 0.0%                           |                       |     |     |                       |                 |
| Franklin     | 010080300            | George E. Weems Memorial Hospital                             | Rural            | 10     | 19     | 97,103          | 0.66                    | 0.67                    | 50,515               | -                       | -                            | 50,515                                  | -  | -   | 50,515            | 0.0%                           |                       |     |     |                       |                 |
| Gulf         | 002012700            | Ascension Sacred Heart Gulf                                   | Rural            | 41     | 111    | 534,982         | 1.18                    | 1.19                    | 355,655              | -                       | -                            | 355,655                                 | -  | -   | 355,655           | 0.0%                           |                       |     |     |                       |                 |
| Hardee       | 010260100            | AdventHealth Wauchula   | Rural            | 25     | 58     | 582,346         | 0.90                    | 0.90                    | 172,824              | -                       | -                            | 172,824                                 | -  | -   | 172,824           | 0.0%                           |                       |     |     |                       |                 |
| Henry        | 010086200            | Henry Regional Medical Center                                 | Rural            | 47     | 89     | 800,197         | 1.03                    | 1.04                    | 365,530              | -                       | -                            | 365,530                                 | -  | -   | 365,530           | 0.0%                           |                       |     |     |                       |                 |
| Hernando     | 010087100            | Bayfront Health Brooksville                                   | All Other        | 1,682  | 5,096  | 132,676,244     | 0.91                    | 0.92                    | 5,816,110            | 77,258                  | -                            | 5,893,368                               | -  | -   | 5,893,368         | 1.3%                           |                       |     |     |                       |                 |
| Hernando     | 010355100            | Encompass Health Rehabilitation Hospital of Spring Hill       | Rehab            | 6      | 106    | 235,387         | 1.03                    | 1.04                    | 79,696               | -                       | -                            | 79,696                                  | -  | -   | 79,696            | 0.0%                           |                       |     |     |                       |                 |
| Hernando     | 012007300            | Oak Hill Hospital   | All Other        | 2,796  | 8,053  | 174,889,933     | 0.70                    | 0.71                    | 6,956,956            | 196,864                 | -                            | 7,153,820                               | -  | 1,526,279                                       | 8,680,099         | 2.3%                           |                       |     |     |                       |                 |
| Highlands    | 010089700            | Highlands Regional Medical Center                             | All Other        | 798    | 1,980  | 27,955,573      | 0.58                    | 0.58                    | 1,625,644            | 3,685                   | -                            | 1,629,329                               | -  | -   | 1,629,329         | 0.2%                           |                       |     |     |                       |                 |
| Highlands    | 010090100            | AdventHealth Lake Placid                                      | All Other        | 2,246  | 5,891  | 64,923,026      | 0.80                    | 0.81                    | 6,211,880            | -                       | -                            | 6,211,880                               | -  | -   | 6,211,880         | 0.0%                           |                       |     |     |                       |                 |
| Hillsborough | 002576600            | Shriners Hospital for Children - Tampa                        | All Other        | 101    | 204    | 4,549,825       | 2.54                    | 2.56                    | 1,081,022            | -                       | -                            | 1,081,022                               | 232,269                                  | -   | 1,313,292         | 0.0%                           |                       |     |     |                       |                 |
| Hillsborough | 010094300            | AdventHealth Carrollwood                                      | All Other        | 552    | 2,002  | 33,388,921      | 1.29                    | 1.30                    | 2,505,463            | 2,725                   | -                            | 2,508,188                               | -  | 38,239  | 2,546,427         | 0.1%                           |                       |     |     |                       |                 |
| Hillsborough | 010097802            | St. Joseph's Hospital   | All Other        | 18,932 | 69,477 | 730,690,380     | 0.98                    | 0.99                    | 81,400,042           | 7,930,629               | 8,968,408                    | 98,299,078                              | 1,783,603                                | -   | 100,082,682       | 7.9%                           |                       |     |     |                       |                 |
| Hillsborough | 010098600            | South Florida Baptist Hospital                                | All Other        | 1,966  | 4,542  | 52,333,080      | 0.80                    | 0.80                    | 5,478,516            | 27,680                  | -                            | 5,506,196                               | -  | -   | 5,506,196         | 0.5%                           |                       |     |     |                       |                 |
| Hillsborough | 010099400            | Tampa General Hospital  | All Other        | 14,034 | 69,388 | 953,025,001     | 1.12                    | 1.13                    | 63,741,184           | 10,768,547              | 10,885,470                   | 85,395,201                              | 20,931,688                               | 4,953,205                                       | 111,280,094       | 9.7%                           |                       |     |     |                       |                 |
| Hillsborough | 010102800            | AdventHealth Tampa  | All Other        | 3,634  | 16,859 | 226,108,338     | 1.21                    | 1.22                    | 16,808,288           | 679,218                 | -                            | 17,487,506                              | -  | 187,927   | 17,675,433        | 3.8%                           |                       |     |     |                       |                 |
| Hillsborough | 010230000            | Kindred Hospital-Central Tampa                                | LTAC             | 46     | 1,727  | 16,344,602      | 3.03                    | 3.05                    | 1,061,240            | 425,889                 | -                            | 1,487,128                               | -  | -   | 1,487,128         | 28.6%                          |                       |     |     |                       |                 |
| Hillsborough | 010234200            | Kindred Hospital-Bay Area-Tampa                               | LTAC             | 33     | 2,080  | 15,289,763      | 3.23                    | 3.26                    | 812,324              | 516,242                 | -                            | 1,328,566                               | -  | -   | 1,328,566         | 38.9%                          |                       |     |     |                       |                 |
| Hillsborough | 011279800            | Memorial Hospital of Tampa                                    | All Other        | 636    | 3,528  | 43,968,419      | 0.89                    | 0.90                    | 1,971,948            | -                       | -                            | 2,068,259                               | -  | -   | 2,068,259         | 4.7%                           |                       |     |     |                       |                 |
| Hillsborough | 011807900            | Brandon Regional Hospital                                     | All Other        | 6,379  | 18,787 | 324,128,802     | 0.76                    | 0.77                    | 19,395,311           | 181,611                 | -                            | 19,576,922                              | -  | 1,824,936                                       | 21,401,858        | 0.8%                           |                       |     |     |                       |                 |
| Hillsborough | 011984900            | Tampa Community Hospital                                      | All Other        | 539    | 2,658  | 35,474,029      | 0.81                    | 0.82                    | 1,508,863            | 90,590                  | -                            | 1,599,453                               | -  | -   | 1,599,453         | 5.7%                           |                       |     |     |                       |                 |
| Hillsborough | 011994600            | South Bay Hospital  | All Other        | 241    | 703    | 18,138,595      | 1.00                    | 1.01                    | 810,782              | -                       | -                            | 810,782                                 | -  | -   | 810,782           | 0.0%                           |                       |     |     |                       |                 |
| Hillsborough | 012032400            | H. Lee Moffitt Cancer Center & Research Institute Hospital    | All Other        | 670    | 5,104  | 67,099,922      | 2.89                    | 2.92                    | 6,882,707            | 796,515                 | -                            | 7,679,222                               | -  | 1,673,918                                       | 9,353,140         | 8.5%                           |                       |     |     |                       |                 |
| Holmes       | 010103600            | Doctors Memorial Hospital                                     | Rural            | 53     | 139    | 503,628         | 0.63                    | 0.63                    | 253,661              | -                       | -                            | 253,661                                 | -  | -   | 253,661           | 0.0%                           |                       |     |     |                       |                 |
| Indian River | 010104400            | Cleveland Clinic Indian River Hospital                        | All Other        | 2,640  | 8,547  | 50,213,469      | 0.63                    | 0.63                    | 5,920,909            | 47,243                  | -                            | 5,968,152                               | -  | -   | 5,968,152         | 0.8%                           |                       |     |     |                       |                 |
| Indian River | 012001400            | Steward Sebastian River Medical Center                        | All Other        | 170    | 896    | 18,719,657      | 1.45                    | 1.46                    | 871,005              | 6,578                   | -                            | 877,583                                 | -  | -   | 877,583           | 0.7%                           |                       |     |     |                       |                 |
| Indian River | 012034100            | Encompass Health Rehabilitation Hospital of Treasure Coast    | Rehab            | 15     | 278    | 743,572         | 1.05                    | 1.06                    | 213,185              | -                       | -                            | 213,185                                 | -  | -   | 213,185           | 0.0%                           |                       |     |     |                       |                 |
| Jackson      | 010106100            | Jackson Hospital  | Rural            | 854    | 1,847  | 4,555,796       | 0.49                    | 0.49                    | 3,203,997            | -                       | -                            | 3,203,997                               | -  | -   | 3,203,997         | 0.0%                           |                       |     |     |                       |                 |
| Lake         | 010107900            | UF Health Leesburg Hospital Inc                               | All Other        | 2,487  | 7,713  | 40,736,779      | 0.65                    | 0.66                    | 5,742,691            | 113,573                 | -                            | 5,856,264                               | -  | -   | 5,856,264         | 1.9%                           |                       |     |     |                       |                 |
| Lake         | 010108700            | Orlando Health South Lake Hospital                            | All Other        | 1,781  | 4,645  | 73,561,259      | 0.73                    | 0.74                    | 4,571,729            | 254,725                 | -                            | 4,826,454                               | -  | -   | 4,826,454         | 5.3%                           |                       |     |     |                       |                 |
| Lake         | 010109500            | AdventHealth Waterman   | All Other        | 2,055  | 6,962  | 65,694,131      | 0.96                    | 0.96                    | 7,066,172            | 82,053                  | -                            | 7,148,225                               | -  | -   | 7,148,225         | 1.1%                           |                       |     |     |                       |                 |
| Lee          | 010110900            | Lee Memorial Hospital   | All Other        | 9,429  | 33,934 | 354,307,278     | 1.08                    | 1.09                    | 47,167,102           | 2,222,451               | 5,189,957                    | 54,579,510                              | 9,422,091                                | 594,369   | 64,595,970        | 3.4%                           |                       |     |     |                       |                 |
| Lee          | 010111700            | Lehigh Regional Medical Center                                | All Other        | 258    | 800    | 16,842,364      | 1.74                    | 1.76                    | 1,549,824            | -                       | -                            | 1,549,824                               | -  | -   | 1,549,824         | 0.0%                           |                       |     |     |                       |                 |
| Lee          | 011134100            | Gulf Coast Medical Center Lee Memorial Health System          | All Other        | 3,323  | 9,662  | 101,408,245     | 0.77                    | 0.78                    | 8,904,173            | 372,935                 | -                            | 9,277,108                               | -  | -   | 9,277,108         | 4.0%                           |                       |     |     |                       |                 |
| Lee          | 011971700            | Cape Coral Hospital   | All Other        | 2,395  | 5,922  | 60,615,355      | 0.71                    | 0.72                    | 6,010,081            | 125,790                 | -                            | 6,135,872                               | -  | -   | 6,135,872         | 2.1%                           |                       |     |     |                       |                 |
| Lee          | 013854800            | Select Specialty Hospital - Fort Myers                        | LTAC             | 9      | 250    | 3,117,956       | 2.81                    | 2.83                    | 174,528              | 131,473                 | -                            | 306,001                                 | -  | -   | 306,001           | 43.0%                          |                       |     |     |                       |                 |
| Leon         | 010113300            | Tallahassee Memorial Hospital                                 | All Other        | 5,837  | 18,490 | 176,322,568     | 0.99                    | 1.00                    | 24,346,631           | 613,857                 | 2,678,129                    | 27,638,618                              | -  | 1,256,293                                       | 28,894,911        | 2.1%                           |                       |     |     |                       |                 |
| Leon         | 010374800            | Select Specialty Hospital - Tallahassee                       | LTAC             | 11     | 161    | 1,003,461       | 2.06                    | 2.07                    | 161,833              | -                       | -                            | 161,833                                 | -  | -   | 161,833           | 0.0%                           |                       |     |     |                       |                 |
| Leon         | 011980600            | Capital Regional Medical Center                               | All Other        | 3,327  | 9,297  | 134,109,899     | 0.80                    | 0.81                    | 9,563,665            | 183,347                 | -                            | 9,747,012                               | -  | -   | 9,747,012         | 1.9%                           |                       |     |     |                       |                 |
| Leon         | 012033200            | Encompass Health Rehabilitation Hospital of Tallahassee       | Rehab            | 28     | 291    | 510,713         | 1.25                    | 1.26                    | 485,376              | -                       | -                            | 485,376                                 | -  | -   | 485,376           | 0.0%                           |                       |     |     |                       |                 |
| Levy         | 010114100            | Regional General Hospital Williston                           | Rural            | 12     | 33     | 71,774          | 0.49                    | 0.49                    | 47,135               | -                       | -                            | 47,135                                  | -  | -   | 47,135            | 0.0%                           |                       |     |     |                       |                 |
| Madison      | 010115000            | Madison County Memorial Hospital                              | Rural            | 30     | 67     | 468,715         | 0.78                    | 0.78                    | 182,771              | -                       | -                            | 182,771                                 | -  | -   | 182,771           | 0.0%                           |                       |     |     |                       |                 |
| Manatee      | 010116800            | Manatee Memorial Hospital                                     | All Other        | 5,025  | 16,232 | 181,756,841     | 0.71                    | 0.71                    | 12,661,532           | 790,397                 | -                            | 13,451,928                              | -  | 726,205   | 14,178,133        | 5.6%                           |                       |     |     |                       |                 |
| Manatee      | 010342000            | Lakewood Ranch Medical Center                                 | All Other        | 281    | 2,295  | 21,919,170      | 1.06                    | 1.06                    | 1,026,344            | 263,810                 | -                            | 1,290,154                               | -  | -   | 1,290,154         | 20.4%                          |                       |     |     |                       |                 |
| Manatee      | 011021300            | Blake Medical Center  | All Other        | 885    | 6,489  | 145,060,341     | 1.75                    | 1.77                    | 5,471,878            | 1,747,814               | 601,953                      | 7,821,645                               | -  | 968,513   | 8,790,158         | 19.9%                          |                       |     |     |                       |                 |
| Marion       | 008369200            | Encompass Health Rehabilitation Hospital of Ocala             | Rehab            | 9      | 103    | 169,017         | 0.94                    | 0.95                    | 127,004              | -                       | -                            | 127,004                                 | -  | -   | 127,004           | 0.0%                           |                       |     |     |                       |                 |
| Marion       | 010117600            | AdventHealth Ocala  | All Other        | 4,277  | 10,939 | 127,562,341     | 0.65                    | 0.65                    | 10,277,015           | 164,841                 | -                            | 10,441,857                              | -  | -   | 10,441,857        | 1.6%                           |                       |     |     |                       |                 |
| Marion       | 010353500            | Kindred Hospital Ocala  | LTAC             | 1      | 27     | 112,031         | 1.58                    | 1.59                    | 12,043               | -                       | -                            | 12,043                                  | -  | -   | 12,043            | 0.0%                           |                       |     |     |                       |                 |
| Marion       | 010988600            | Ocala Regional Medical Center                                 | All Other        | 1,854  | 11,225 | 233,973,222     | 1.70                    | 1.72                    | 11,424,229           | 1,577,689               | 1,256,665                    | 14,258,583                              | -  | 1,615,749                                       | 15,874,332        | 9.9%                           |                       |     |     |                       |                 |
| Martin       | 009587500            | Encompass Health Rehab Hospital an Affiliate of Martin Health | Rehab            | 5      | 91     | 218,164         | 1.12                    | 1.12                    | 76,639               | -                       | -                            | 76,639                                  | -  | -   | 76,639            | 0.0%                           |                       |     |     |                       |                 |
| Martin       | 010118400            | Cleveland Clinic Martin North Hospital                        | All Other        | 3,653  | 14,011 | 112,590,301     | 0.72                    | 0.72                    | 9,863,062            | 88,086                  | -                            | 9,951,148                               | -  | -   | 9,951,148         | 0.9%                           |                       |     |     |                       |                 |
| Monroe       | 010119200            | Lower Keys Medical Center                                     | Rural            | 733    | 2,304  | 24,894,594      | 0.54                    | 0.54                    | 2,982,643            | 22,724                  | -                            | 3,005,367                               | -  | -   | 3,005,367         | 0.8%                           |                       |     |     |                       |                 |
| Monroe       | 010121400            | Mariners Hospital   | Rural            | 10     | 43     | 432,036         | 0.69                    | 0.70                    | 55,714               | -                       | -                            | 55,714                                  | -  | -   | 55,714            | 0.0%                           |                       |     |     |                       |                 |
| Nassau       | 010123100            | Baptist Medical Center Nassau                                 | Rural            | 764    | 1,654  | 16,553,530      | 0.53                    | 0.53                    | 3,090,264            | 5,787                   | -                            | 3,096,051                               | -  | -   | 3,096,051         | 0.2%                           |                       |     |     |                       |                 |
| Okaloosa     | 010125700            | Twin Cities Hospital  | All Other        | 123    | 446    | 12,195,863      | 1.00                    | 1.01                    | 415,491              | -                       | -                            | 415,491                                 | -  | -   | 415,491           | 0.0%                           |                       |     |     |                       |                 |
| Okaloosa     | 010126500            | North Okaloosa Medical Center                                 | All Other        | 1,082  | 3,221  | 65,721,245      | 0.79                    | 0.79                    | 2,992,257            | -                       | -                            | 2,992,257                               | -  | -   | 2,992,257         | 0.0%                           |                       |     |     |                       |                 |
| Okaloosa     | 011132500            | Fort Walton Beach Medical Center                              | All Other        | 2,505  | 13,716 | 232,752,271     | 0.91                    | 0.92                    | 8,238,151            | 333,775                 | 906,197                      | 9,478,122                               | -  | -   | 9,478,122         | 3.5%                           |                       |     |     |                       |                 |
| Okeechobee   | 011975000            | Raulerson Hospital  | Rural            | 569    | 2,084  | 39,457,364      | 1.13                    | 1.14                    | 4,936,242            | 17,539                  | -                            | 4,953,781                               | -  | -   | 4,953,781         | 0.4%                           |                       |     |     |                       |                 |
| OOS_Part     | 010199100            | Wiregrass Hospital  | All Other        | 12     | 47     | 75,289          | 0.90                    | 0.91                    | 38,298               | -                       | -                            | 38,298                                  | -  | -   | 38,298            | 0.0%                           |                       |     |     |                       |                 |
| OOS_Part     | 010202400            | D.W. McMillan Memorial  | All Other        | 2      | 7      | 26,275          | 0.76                    | 0.76                    | 5,361                | -                       | -                            | 5,361                                   | -  | -   | 5,361             | 0.0%                           |                       |     |     |                       |                 |
| OOS_Part     | 010204100            | Archbold Memorial Hospital                                    | All Other        | 10     | 43     | 176,112         | 0.69                    | 0.69                    | 25,498               | -                       | -                            | 25                                      |  |   |                   |                                |                       |     |     |                       |                 |



|            |                      |   |                  |       |        |                 |                         |                         |                      | Simulated Payments Based on Version 37 APR DRGs |                              |   |  |             |                   |                                |                 |
|------------|----------------------|---|------------------|-------|--------|-----------------|-------------------------|-------------------------|----------------------|---|------------------------------|---|--|-------------|-------------------|--------------------------------|-----------------|
|            |                      |   |                  |       |        |                 |                         |                         |                      | (A)   | (B)                          | (C)                                     | (D) = (A) + (B) + (C)                    | (E)         | (F)               | (G) = (D) + (E) + (F)          | (H) = (B) / (G) |
| County     | Provider Medicaid ID | Provider Name   | Pricing Category | Stays | Days   | Trended Charges | V37 Casemix Re-centered | V37 Casemix w DCI Trend | V37 DRG Base Payment | V37 DRG Outlier Payment                         | V37 DRG Trauma Supp. Payment | V37 Total DRG Payment - Excl. GME & ARE | Automatic Rate Enhancement (ARE) Payment | GME Payment | V37 Payment Total | V37 Outlier Payment Percentage |                 |
| Pasco      | 000949600            | AdventHealth Connerton  | LTAC             | 17    | 121    | 2,484,267       | 2.49                    | 2.51                    | 307,443              | 16,403  | -                            | 323,846                                 | -  | -           | 323,846           | 5.1%                           |                 |
| Pasco      | 005456800            | AdventHealth Wesley Chapel                                    | All Other        | 729   | 1,806  | 28,737,339      | 0.87                    | 0.88                    | 2,236,779            | -   | -                            | 2,236,779                               | -  | 5,614       | 2,242,393         | 0.0%                           |                 |
| Pasco      | 010149400            | AdventHealth Zephyrhills                                      | All Other        | 1,687 | 4,554  | 54,298,321      | 0.72                    | 0.72                    | 4,219,631            | 12,622  | -                            | 4,232,253                               | -  | -           | 4,232,253         | 0.3%                           |                 |
| Pasco      | 010150800            | Morton Plant North Bay Hospital                               | All Other        | 2,660 | 10,255 | 75,516,855      | 0.85                    | 0.85                    | 8,552,944            | 5,006   | -                            | 8,557,950                               | -  | -           | 8,557,950         | 0.1%                           |                 |
| Pasco      | 010552000            | Medical Center of Trinity                                     | All Other        | 3,626 | 11,000 | 193,456,165     | 0.73                    | 0.73                    | 9,818,571            | 52,800  | -                            | 9,871,371                               | -  | -           | 9,871,371         | 0.5%                           |                 |
| Pasco      | 010959200            | AdventHealth Dade City  | All Other        | 173   | 602    | 14,053,748      | 1.33                    | 1.34                    | 799,688              | 2,654   | -                            | 801,342                                 | -  | -           | 801,342           | 0.3%                           |                 |
| Pasco      | 011988100            | Regional Medical Center Bayonet Point                         | All Other        | 1,405 | 7,764  | 214,265,036     | 1.79                    | 1.81                    | 8,879,442            | 269,943   | 976,739                      | 10,126,124                              | -  | 1,389,663   | 11,515,787        | 2.3%                           |                 |
| Pinellas   | 010151600            | John Hopkins All Children's Hospital                          | High Mcaid       | 4,143 | 27,756 | 528,290,004     | 2.36                    | 2.38                    | 74,670,740           | 34,706,378                                      | 2,986,830                    | 112,363,948                             | 20,279,664                               | 1,406,570   | 134,050,181       | 25.9%                          |                 |
| Pinellas   | 010154100            | Mease Dunedin Hospital  | All Other        | 999   | 4,716  | 30,083,325      | 0.83                    | 0.84                    | 3,084,283            | 175,322   | -                            | 3,259,604                               | -  | -           | 3,259,604         | 5.4%                           |                 |
| Pinellas   | 010156700            | Bayfront Health St Petersburg                                 | All Other        | 5,795 | 16,168 | 251,144,344     | 0.66                    | 0.66                    | 13,547,348           | 1,063,619                                       | 1,491,941                    | 16,102,907                              | -  | 693,833     | 16,796,740        | 6.3%                           |                 |
| Pinellas   | 010158300            | Morton Plant Hospital   | All Other        | 4,423 | 17,127 | 169,788,985     | 0.92                    | 0.93                    | 14,610,344           | 672,841   | -                            | 15,283,185                              | -  | 418,409     | 15,701,594        | 4.3%                           |                 |
| Pinellas   | 010161300            | AdventHealth North Pinellas                                   | All Other        | 549   | 2,142  | 24,245,800      | 1.27                    | 1.28                    | 2,406,622            | 83,213  | -                            | 2,489,835                               | -  | -           | 2,489,835         | 3.3%                           |                 |
| Pinellas   | 010175300            | Encompass Health Rehabilitation Hospital of Largo             | Rehab            | 39    | 428    | 910,045         | 1.09                    | 1.10                    | 545,265              | -   | -                            | 545,265                                 | -  | -           | 545,265           | 0.0%                           |                 |
| Pinellas   | 010276800            | Kindred Hospital-Bay Area-St Petersburg                       | LTAC             | 44    | 1,599  | 15,036,891      | 3.47                    | 3.50                    | 1,163,330            | 279,789   | -                            | 1,443,119                               | -  | -           | 1,443,119         | 19.4%                          |                 |
| Pinellas   | 010372100            | BayCare Alliant Hospital                                      | LTAC             | 22    | 332    | 6,848,475       | 4.83                    | 4.87                    | 762,721              | 246,661   | -                            | 1,009,382                               | -  | -           | 1,009,382         | 24.4%                          |                 |
| Pinellas   | 010823300            | Windmoor Healthcare of Clearwater                             | All Other        | 808   | 3,270  | 9,549,318       | 0.58                    | 0.58                    | 1,649,654            | -   | -                            | 1,649,654                               | -  | -           | 1,649,654         | 0.0%                           |                 |
| Pinellas   | 011519300            | Northside Hospital  | All Other        | 894   | 4,505  | 128,067,286     | 1.84                    | 1.85                    | 5,724,322            | 181,872   | -                            | 5,906,194                               | -  | 516,289     | 6,422,483         | 2.8%                           |                 |
| Pinellas   | 011974100            | Largo Medical Center  | All Other        | 1,972 | 11,430 | 174,504,085     | 1.15                    | 1.16                    | 7,935,173            | 343,449   | -                            | 8,278,622                               | -  | 1,749,869   | 10,028,491        | 3.4%                           |                 |
| Pinellas   | 012008100            | Mease Countryside Hospital                                    | All Other        | 2,919 | 8,698  | 76,876,088      | 0.72                    | 0.73                    | 8,107,381            | 48,754  | -                            | 8,156,134                               | -  | -           | 8,156,134         | 0.6%                           |                 |
| Pinellas   | 012010300            | St. Petersburg General Hospital                               | All Other        | 1,286 | 4,122  | 92,786,540      | 0.85                    | 0.85                    | 3,821,722            | 163,204   | -                            | 3,984,926                               | -  | 599,082     | 4,584,008         | 3.6%                           |                 |
| Pinellas   | 012011100            | Palms of Pasadena Hospital                                    | All Other        | 292   | 1,684  | 35,269,891      | 1.42                    | 1.43                    | 1,449,266            | 126,446   | -                            | 1,575,712                               | -  | -           | 1,575,712         | 8.0%                           |                 |
| Pinellas   | 012022700            | St. Anthony's Hospital  | All Other        | 2,956 | 13,745 | 151,805,205     | 1.21                    | 1.22                    | 12,612,224           | 624,807   | -                            | 13,237,031                              | -  | -           | 13,237,031        | 4.7%                           |                 |
| Polk       | 009268300            | Poinciana Medical Center                                      | All Other        | 499   | 1,536  | 47,560,981      | 1.08                    | 1.09                    | 1,879,890            | -   | -                            | 1,879,890                               | -  | -           | 1,879,890         | 0.0%                           |                 |
| Polk       | 010164800            | Lakeland Regional Medical Center                              | All Other        | 8,695 | 33,119 | 359,670,940     | 0.89                    | 0.90                    | 29,545,974           | 1,912,061                                       | 3,250,057                    | 34,708,092                              | -  | -           | 34,708,092        | 5.5%                           |                 |
| Polk       | 010166400            | AdventHealth Lake Wales                                       | All Other        | 359   | 2,157  | 35,404,332      | 1.23                    | 1.24                    | 1,570,090            | 248,987   | -                            | 1,819,077                               | -  | -           | 1,819,077         | 13.7%                          |                 |
| Polk       | 010169900            | Winter Haven Hospital   | All Other        | 4,631 | 14,725 | 148,737,801     | 0.74                    | 0.75                    | 12,565,236           | 212,209   | -                            | 12,777,445                              | -  | -           | 12,777,445        | 1.7%                           |                 |
| Polk       | 010228800            | AdventHealth Heart Of Florida                                 | All Other        | 1,975 | 5,345  | 127,464,666     | 0.64                    | 0.65                    | 4,508,003            | 77,904  | -                            | 4,585,907                               | -  | -           | 4,585,907         | 1.7%                           |                 |
| Polk       | 012041300            | Bartow Regional Medical Center                                | All Other        | 347   | 1,217  | 18,166,016      | 1.19                    | 1.20                    | 1,453,369            | 24,274  | -                            | 1,477,643                               | -  | -           | 1,477,643         | 1.6%                           |                 |
| Putnam     | 011351400            | Putnam Community Medical Center                               | Rural            | 1,012 | 2,776  | 38,806,799      | 0.91                    | 0.92                    | 7,133,771            | -   | -                            | 7,133,771                               | -  | -           | 7,133,771         | 0.0%                           |                 |
| Santa Rosa | 010173700            | Jay Hospital  | Rural            | 34    | 134    | 830,192         | 0.83                    | 0.83                    | 222,247              | -   | -                            | 222,247                                 | -  | -           | 222,247           | 0.0%                           |                 |
| Santa Rosa | 010174500            | Santa Rosa Medical Center                                     | All Other        | 942   | 2,974  | 38,626,058      | 0.75                    | 0.76                    | 2,465,881            | 17,864  | -                            | 2,483,745                               | -  | -           | 2,483,745         | 0.7%                           |                 |
| Sarasota   | 010176100            | Sarasota Memorial Hospital                                    | All Other        | 6,028 | 23,342 | 263,853,414     | 0.93                    | 0.93                    | 21,215,067           | 2,186,945                                       | 2,342,150                    | 25,744,163                              | -  | 532,322     | 26,276,485        | 8.3%                           |                 |
| Sarasota   | 010253900            | Englewood Community Hospital                                  | All Other        | 131   | 552    | 10,700,274      | 1.33                    | 1.34                    | 589,893              | -   | -                            | 589,893                                 | -  | -           | 589,893           | 0.0%                           |                 |
| Sarasota   | 010356000            | Pam Specialty Hospital of Sarasota                            | LTAC             | 2     | 61     | 619,259         | 6.79                    | 6.86                    | 89,029               | 2,368   | -                            | 91,397                                  | -  | -           | 91,397            | 2.6%                           |                 |
| Sarasota   | 011973300            | Venice Regional Bayfront Health                               | All Other        | 232   | 1,164  | 19,778,504      | 1.56                    | 1.57                    | 1,257,188            | 93,345  | -                            | 1,350,534                               | -  | -           | 1,350,534         | 6.9%                           |                 |
| Sarasota   | 011995400            | Doctor's Hospital of Sarasota                                 | All Other        | 232   | 1,286  | 20,673,788      | 1.30                    | 1.31                    | 1,065,472            | 50,171  | -                            | 1,115,644                               | -  | -           | 1,115,644         | 4.5%                           |                 |
| Sarasota   | 012038300            | Encompass Health Rehabilitation Hospital of Sarasota          | Rehab            | 16    | 219    | 574,515         | 1.02                    | 1.02                    | 219,880              | -   | -                            | 219,880                                 | -  | -           | 219,880           | 0.0%                           |                 |
| Seminole   | 010178800            | Central Florida Regional Hospital                             | All Other        | 1,624 | 6,312  | 119,618,631     | 1.19                    | 1.20                    | 6,836,431            | 132,973   | 752,007                      | 7,721,411                               | -  | -           | 7,721,411         | 1.7%                           |                 |
| Seminole   | 014235500            | Encompass Health Rehabilitation Hospital of Altamonte Springs | Rehab            | 9     | 188    | 364,456         | 1.08                    | 1.09                    | 144,537              | -   | -                            | 144,537                                 | -  | -           | 144,537           | 0.0%                           |                 |
| Seminole   | 021094100            | Oviedo Medical Center   | All Other        | 419   | 1,354  | 15,296,497      | 0.74                    | 0.74                    | 1,076,342            | 29,733  | -                            | 1,106,075                               | -  | -           | 1,106,075         | 2.7%                           |                 |
| St. Johns  | 010171100            | Flagler Hospital  | Rural            | 2,699 | 8,823  | 75,759,275      | 0.68                    | 0.68                    | 14,550,388           | 340,302   | -                            | 14,890,690                              | -  | -           | 14,890,690        | 2.3%                           |                 |
| St. Lucie  | 004805200            | Port St. Lucie Hospital                                       | All Other        | 23    | 201    | 404,348         | 0.49                    | 0.50                    | 40,092               | -   | -                            | 40,092                                  | -  | -           | 40,092            | 0.0%                           |                 |
| St. Lucie  | 011969500            | Lawwood Regional Medical Center & Heart Institute             | All Other        | 5,033 | 26,587 | 452,742,143     | 1.08                    | 1.09                    | 21,732,751           | 1,207,734                                       | 2,400,158                    | 25,340,643                              | -  | -           | 25,340,643        | 4.8%                           |                 |
| St. Lucie  | 011997100            | St. Lucie Medical Center                                      | All Other        | 1,920 | 6,055  | 83,619,806      | 0.60                    | 0.61                    | 4,105,007            | 11,809  | -                            | 4,116,817                               | -  | 659,138     | 4,775,955         | 0.2%                           |                 |
| Sumter     | 010317900            | UF Health The Villages Hospital                               | All Other        | 377   | 2,091  | 16,005,961      | 1.25                    | 1.26                    | 1,608,206            | 87,022  | -                            | 1,695,228                               | -  | -           | 1,695,228         | 5.1%                           |                 |
| Sumter     | 013800200            | Select Specialty Hospital -The Villages Inc                   | LTAC             | 1     | 1      | 123,140         | 1.58                    | 1.59                    | 12,003               | -   | -                            | 12,003                                  | -  | -           | 12,003            | 0.0%                           |                 |
| Suwannee   | 010179600            | Lake City Medical Center Suwannee Campus                      | Rural            | 131   | 365    | 3,452,072       | 0.82                    | 0.83                    | 773,541              | -   | -                            | 773,541                                 | -  | -           | 773,541           | 0.0%                           |                 |
| Taylor     | 010180000            | Doctor's Memorial Hospital                                    | Rural            | 109   | 274    | 1,384,473       | 0.88                    | 0.88                    | 739,962              | -   | -                            | 739,962                                 | -  | -           | 739,962           | 0.0%                           |                 |
| Union      | 010822700            | Lake Butler Hospital  | Rural            | 4     | 13     | 67,429          | 0.75                    | 0.76                    | 24,142               | -   | -                            | 24,142                                  | -  | -           | 24,142            | 0.0%                           |                 |
| Volusia    | 010182600            | AdventHealth Fish Memorial                                    | All Other        | 740   | 3,082  | 32,395,191      | 1.28                    | 1.29                    | 3,306,115            | 71,677  | -                            | 3,377,792                               | -  | -           | 3,377,792         | 2.1%                           |                 |
| Volusia    | 010183400            | AdventHealth New Smyrna Beach                                 | All Other        | 336   | 1,797  | 16,268,856      | 1.41                    | 1.42                    | 1,657,106            | 192,128   | -                            | 1,849,234                               | -  | -           | 1,849,234         | 10.4%                          |                 |
| Volusia    | 010184200            | Halifax Health Medical Center                                 | All Other        | 5,477 | 26,516 | 169,117,727     | 0.86                    | 0.86                    | 17,648,281           | 1,717,409                                       | 1,951,717                    | 21,317,407                              | -  | 478,347     | 21,795,754        | 7.9%                           |                 |
| Volusia    | 010186900            | AdventHealth Daytona Beach                                    | All Other        | 2,949 | 10,175 | 83,917,316      | 0.81                    | 0.82                    | 8,431,821            | 66,830  | -                            | 8,498,650                               | -  | -           | 8,498,650         | 0.8%                           |                 |
| Volusia    | 010187700            | AdventHealth Deland   | All Other        | 1,726 | 5,015  | 47,696,567      | 0.75                    | 0.76                    | 4,534,155            | -   | -                            | 4,534,155                               | -  | -           | 4,534,155         | 0.0%                           |                 |
| Volusia    | 016486300            | Select Specialty Hospital - Daytona Beach                     | LTAC             | 6     | 59     | 904,391         | 2.93                    | 2.95                    | 87,885               | 1,261   | -                            | 89,146                                  | -  | -           | 89,146            | 1.4%                           |                 |
| Volusia    | 017009200            | Memorial Health Systems, Inc.                                 | All Other        | 12    | 129    | 836,868         | 1.20                    | 1.21                    | 51,018               | -   | -                            | 51,018                                  | -  | -           | 51,018            | 0.0%                           |                 |
| Walton     | 010188500            | Healthmark Regional Medical Center                            | Rural            | 52    | 213    | 812,448         | 0.94                    | 0.95                    | 388,108              | -   | -                            | 388,108                                 | -  | -           | 388,108           | 0.0%                           |                 |
| Walton     | 010323300            | Ascension Sacred Heart Emerald Coast                          | Rural            | 1,591 | 3,915  | 28,050,970      | 0.47                    | 0.47                    | 5,688,337            | 3,354   | -                            | 5,691,690                               | -  | -           | 5,691,690         | 0.1%                           |                 |
| Washington | 010190700            | Northwest Florida Community Hospital                          | Rural            | 71    | 234    | 1,348,627       | 0.96                    | 0.97                    | 486,700              | -   | -                            | 486,700                                 | -  | -           | 486,700           | 0.0%                           |                 |



State of Florida Medicaid - Agency for Health Care Administration (Agency)  
 Impact of 3M™ APR DRG Version 38 Updates on Simulated Hospital Inpatient Payments  
 July 2020 Through June 2021 (SFY 2020-2021) Hospital Payment Rates  
 Simulated Payments and Impacts by Hospital

|           |                      |   |                  | Simulated Payments Based on Version 38 APR DRGs |           |                  |                         |                         |                      |                         |                              |   |  |              |                   |                                |
|-----------|----------------------|---|------------------|---|-----------|------------------|-------------------------|-------------------------|----------------------|-------------------------|------------------------------|---|--|--------------|-------------------|--------------------------------|
|           |                      |   |                  | (I)   | (J)       | (K)              | (L) = (I) + (J) + (K)   | (E)                     | (F)                  | (M) = (L) + (E) + (F)   | (N) = (J) / (M)              |   |  |              |                   |                                |
| County    | Provider Medicaid ID | Provider Name   | Pricing Category | Stays   | Days      | Trended Charges  | V38 Casemix Re-centered | V38 Casemix w DCI Trend | V38 DRG Base Payment | V38 DRG Outlier Payment | V38 DRG Trauma Supp. Payment | V38 Total DRG Payment - Excl. GRG & ARE | Automatic Rate Enhancement (ARE) Payment | GME Payment  | V38 Payment Total | V38 Outlier Payment Percentage |
|           |                      |   |                  | 523,973   | 2,234,929 | \$29,121,516,402 | 1.00                    | 1.01                    | \$2,225,306,491      | \$344,105,587           | \$163,221,836                | \$2,732,633,914                         | \$257,792,451                            | \$96,982,300 | \$3,087,408,665   | 11.1%                          |
| Alachua   | 010003000            | UF Health Shands Hospital                                       | All Other        | 13,710  | 67,221    | \$738,739,146    | 1.63                    | 1.64                    | \$101,855,483        | \$16,203,612            | \$17,320,897                 | \$135,379,992                           | \$23,063,730                             | \$9,120,003  | \$167,563,725     | 9.7%                           |
| Alachua   | 010377200            | Select Specialty Hospital - Gainesville                         | LTAC             | 5   | 98        | 482,355          | 2.54                    | 2.56                    | 91,319               | -                       | -                            | 91,319                                  | -  | -            | 91,319            | 0.0%                           |
| Alachua   | 010862600            | North Florida Regional Medical Center                           | All Other        | 5,008   | 16,528    | 258,101,169      | 0.78                    | 0.79                    | 14,167,947           | 575,290                 | -                            | 14,743,237                              | -  | 1,920,289    | 16,663,526        | 3.5%                           |
| Alachua   | 103449400            | UF Health Rehab Hospital  | Rehab            | 48  | 446       | 1,982,593        | 1.65                    | 1.67                    | 1,094,776            | -                       | -                            | 1,094,776                               | -  | -            | 1,094,776         | 0.0%                           |
| Baker     | 010004800            | Ed Fraser Memorial Hospital                                     | Rural            | 19  | 71        | 544,734          | 0.74                    | 0.75                    | 99,900               | -                       | -                            | 99,900                                  | -  | -            | 99,900            | 0.0%                           |
| Bay       | 010006400            | Ascension Sacred Heart Bay                                      | All Other        | 1,245   | 5,725     | 57,533,582       | 1.32                    | 1.33                    | 5,726,407            | 157,455                 | 629,905                      | 6,513,767                               | -  | -            | 6,513,767         | 2.4%                           |
| Bay       | 010275000            | Encompass Health Rehabilitation Hospital of Panama City         | Rehab            | 16  | 155       | 320,939          | 1.65                    | 1.67                    | 321,504              | -                       | -                            | 321,504                                 | -  | -            | 321,504           | 0.0%                           |
| Bay       | 010343800            | Select Specialty Hospital - Panama City                         | LTAC             | 8   | 102       | 1,254,498        | 2.01                    | 2.03                    | 122,640              | 21,373                  | -                            | 144,013                                 | -  | -            | 144,013           | 14.8%                          |
| Bay       | 011761700            | Gulf Coast Regional Medical Center                              | All Other        | 4,162   | 10,807    | 154,857,405      | 0.83                    | 0.84                    | 14,102,940           | 108,883                 | -                            | 14,211,823                              | 309,996                                  | -            | 14,521,819        | 0.7%                           |
| Bradford  | 010007200            | North Florida Regional Medical Center Starke Campus             | Rural            | 108   | 376       | 3,432,666        | 0.87                    | 0.88                    | 743,822              | -                       | -                            | 743,822                                 | -  | -            | 743,822           | 0.0%                           |
| Brevard   | 001681500            | Kindred Hospital Melbourne                                      | LTAC             | 7   | 174       | 1,127,866        | 2.96                    | 2.98                    | 150,366              | -                       | -                            | 150,366                                 | -  | -            | 150,366           | 0.0%                           |
| Brevard   | 003158800            | Viera Hospital  | All Other        | 150   | 860       | 9,288,954        | 1.27                    | 1.28                    | 637,592              | 178,705                 | -                            | 816,297                                 | -  | -            | 816,297           | 21.9%                          |
| Brevard   | 003297500            | Palm Bay Hospital   | All Other        | 531   | 2,392     | 25,837,679       | 1.23                    | 1.24                    | 2,242,352            | 165,931                 | -                            | 2,408,283                               | -  | -            | 2,408,283         | 6.9%                           |
| Brevard   | 010008100            | Holmes Regional Medical Center                                  | All Other        | 4,784   | 18,188    | 182,552,660      | 0.87                    | 0.87                    | 15,358,199           | 1,393,304               | 1,689,402                    | 18,440,905                              | -  | -            | 18,440,905        | 7.6%                           |
| Brevard   | 010009900            | Cape Canaveral Hospital   | All Other        | 1,347   | 4,212     | 35,546,855       | 0.71                    | 0.71                    | 3,349,808            | 100,378                 | -                            | 3,450,187                               | -  | -            | 3,450,187         | 2.9%                           |
| Brevard   | 010010200            | Parrish Medical Center  | All Other        | 1,359   | 3,960     | 33,273,909       | 0.70                    | 0.70                    | 3,311,361            | 39,925                  | -                            | 3,351,286                               | -  | -            | 3,351,286         | 1.2%                           |
| Brevard   | 010011100            | Rockledge Regional Medical Center                               | All Other        | 1,543   | 4,866     | 76,106,028       | 0.84                    | 0.85                    | 4,540,718            | 36,534                  | -                            | 4,577,252                               | -  | -            | 4,577,252         | 0.8%                           |
| Brevard   | 010320900            | Melbourne Regional Medical Center                               | All Other        | 162   | 571       | 17,486,754       | 1.50                    | 1.51                    | 820,989              | 30,382                  | -                            | 851,372                                 | -  | -            | 851,372           | 3.6%                           |
| Brevard   | 012042100            | Sea Pines Rehabilitation Hospital Affiliate of Encompass Health | Rehab            | 20  | 264       | 599,575          | 1.92                    | 1.94                    | 416,274              | -                       | -                            | 416,274                                 | -  | -            | 416,274           | 0.0%                           |
| Broward   | 010012900            | Broward Health Medical Center                                   | All Other        | 9,823   | 55,733    | 444,652,744      | 1.01                    | 1.02                    | 42,292,030           | 10,101,207              | 7,217,933                    | 59,611,169                              | 16,840,310                               | 2,345,919    | 78,797,398        | 12.8%                          |
| Broward   | 010018800            | Holy Cross Hospital   | All Other        | 1,472   | 7,682     | 60,214,009       | 1.03                    | 1.04                    | 5,232,168            | 749,097                 | -                            | 5,981,265                               | -  | 1,116,136    | 7,097,401         | 10.6%                          |
| Broward   | 010019600            | Kindred Hospital-South Florida-Ft Lauderdale                    | LTAC             | 10  | 270       | 2,352,010        | 2.97                    | 3.00                    | 226,558              | 35,513                  | -                            | 262,071                                 | -  | -            | 262,071           | 13.6%                          |
| Broward   | 010020000            | Memorial Regional Hospital                                      | All Other        | 11,296  | 68,253    | 991,367,603      | 1.27                    | 1.28                    | 68,735,783           | 16,122,901              | 11,695,804                   | 96,554,488                              | 13,577,787                               | 473,038      | 110,605,313       | 14.6%                          |
| Broward   | 010021800            | Broward Health North  | All Other        | 1,696   | 12,426    | 115,779,278      | 1.44                    | 1.45                    | 8,517,937            | 3,697,084               | 937,384                      | 13,152,405                              | -  | -            | 13,152,405        | 28.1%                          |
| Broward   | 010191500            | Kindred Hospital-South Florida-Hollywood                        | LTAC             | 20  | 587       | 5,657,181        | 3.50                    | 3.53                    | 533,311              | -                       | -                            | 533,311                                 | -  | -            | 533,311           | 28.7%                          |
| Broward   | 010220200            | Cleveland Clinic Hospital                                       | All Other        | 187   | 1,274     | 14,167,712       | 1.92                    | 1.94                    | 1,250,149            | 229,840                 | -                            | 1,479,989                               | -  | 1,691,459    | 3,171,448         | 7.2%                           |
| Broward   | 010222900            | Memorial Hospital Pembroke                                      | All Other        | 988   | 4,499     | 71,766,799       | 1.13                    | 1.14                    | 3,887,684            | 385,674                 | -                            | 4,273,358                               | -  | -            | 4,273,358         | 9.0%                           |
| Broward   | 010240700            | St. Anthony's Rehabilitation Hospital                           | Rehab            | 3   | 37        | 90,156           | 2.03                    | 2.05                    | 86,334               | -                       | -                            | 86,334                                  | -  | -            | 86,334            | 0.0%                           |
| Broward   | 010252100            | Memorial Hospital West  | All Other        | 4,713   | 18,789    | 276,854,593      | 0.83                    | 0.84                    | 14,110,852           | 2,106,506               | -                            | 16,217,358                              | -  | 411,877      | 16,629,235        | 12.7%                          |
| Broward   | 010345400            | Memorial Hospital Miramar                                       | All Other        | 3,495   | 9,835     | 98,109,314       | 0.51                    | 0.51                    | 6,638,818            | 155,327                 | -                            | 6,794,144                               | -  | -            | 6,794,144         | 2.3%                           |
| Broward   | 010459100            | Northwest Medical Center  | All Other        | 2,876   | 13,184    | 233,293,033      | 1.01                    | 1.02                    | 12,078,384           | 133,948                 | -                            | 12,212,332                              | -  | -            | 12,212,332        | 1.1%                           |
| Broward   | 010821900            | Broward Health Imperial Point                                   | All Other        | 1,070   | 7,001     | 40,800,752       | 1.07                    | 1.08                    | 4,010,985            | 258,657                 | -                            | 4,269,642                               | -  | -            | 4,269,642         | 6.1%                           |
| Broward   | 011230500            | Westside Regional Medical Center                                | All Other        | 857   | 4,729     | 124,774,005      | 1.59                    | 1.60                    | 4,671,491            | 531,330                 | -                            | 5,202,821                               | -  | -            | 5,202,821         | 10.2%                          |
| Broward   | 011280100            | University Hospital and Medical Center                          | All Other        | 1,418   | 7,657     | 93,209,777       | 0.81                    | 0.82                    | 4,241,932            | 6,070                   | -                            | 4,248,002                               | -  | 380,152      | 4,628,154         | 0.1%                           |
| Broward   | 012000600            | Plantation General Hospital                                     | All Other        | 8,501   | 37,941    | 611,414,691      | 0.88                    | 0.88                    | 30,071,472           | 2,853,035               | -                            | 32,924,507                              | 332,435                                  | -            | 33,256,943        | 8.6%                           |
| Broward   | 012027800            | Encompass Health Rehabilitation Hospital of Sunrise             | Rehab            | 33  | 626       | 1,636,025        | 1.98                    | 2.00                    | 827,954              | 10,526                  | -                            | 838,480                                 | -  | -            | 838,480           | 1.3%                           |
| Broward   | 012040500            | Broward Health Coral Springs                                    | All Other        | 3,552   | 12,884    | 76,904,925       | 0.62                    | 0.63                    | 8,217,494            | 515,621                 | -                            | 8,733,115                               | 2,089,627                                | 91,408       | 10,914,150        | 4.7%                           |
| Broward   | 016972100            | St. John's Rehabilitation Hospital                              | All Other        | 36  | 423       | 1,159,892        | 1.99                    | 2.01                    | 247,732              | -                       | -                            | 247,732                                 | -  | -            | 247,732           | 0.0%                           |
| Calhoun   | 010026900            | Calhoun-Liberty Hospital  | Rural            | 22  | 56        | 183,400          | 0.71                    | 0.71                    | 118,833              | -                       | -                            | 118,833                                 | 3,131                                    | -            | 121,965           | 0.0%                           |
| Charlotte | 010027700            | Bayfront Health Punta Gorda                                     | All Other        | 443   | 2,461     | 24,508,175       | 0.97                    | 0.98                    | 1,538,889            | 52,069                  | -                            | 1,590,958                               | -  | -            | 1,590,958         | 3.3%                           |
| Charlotte | 010028500            | Bayfront Health Port Charlotte                                  | All Other        | 2,068   | 5,427     | 81,333,392       | 0.63                    | 0.64                    | 4,806,512            | 19,110                  | -                            | 4,825,622                               | -  | -            | 4,825,622         | 0.4%                           |
| Charlotte | 011746300            | Fawcett Memorial Hospital                                       | All Other        | 486   | 3,813     | 80,937,989       | 1.79                    | 1.80                    | 3,026,029            | 307,065                 | -                            | 3,333,093                               | -  | -            | 3,333,093         | 9.2%                           |
| Citrus    | 010219900            | Citrus Memorial Hospital  | All Other        | 1,295   | 3,791     | 85,875,493       | 0.84                    | 0.85                    | 3,837,651            | 9,610                   | -                            | 3,847,261                               | -  | 256,548      | 4,103,809         | 0.2%                           |
| Citrus    | 011998900            | Bayfront Health Seven Rivers                                    | All Other        | 840   | 1,980     | 37,909,196       | 0.73                    | 0.74                    | 2,133,415            | 27,254                  | -                            | 2,160,669                               | -  | -            | 2,160,669         | 1.3%                           |
| Clay      | 009701300            | Ascension St. Vincent's Clay County                             | All Other        | 1,142   | 2,833     | 27,973,933       | 0.69                    | 0.69                    | 2,734,383            | -                       | -                            | 2,734,383                               | -  | -            | 2,734,383         | 0.0%                           |
| Clay      | 010267900            | Kindred Hospital-North Florida                                  | LTAC             | 12  | 689       | 4,879,279        | 2.63                    | 2.65                    | 238,230              | 267,715                 | -                            | 505,945                                 | -  | -            | 505,945           | 52.9%                          |
| Clay      | 011174100            | Orange Park Medical Center                                      | All Other        | 4,686   | 17,725    | 364,503,713      | 0.91                    | 0.92                    | 16,152,382           | 109,546                 | 1,777,257                    | 18,039,184                              | -  | 1,243,905    | 19,283,089        | 0.6%                           |
| Collier   | 010031500            | Naples Community Hospital                                       | All Other        | 5,467   | 18,035    | 117,168,418      | 0.66                    | 0.67                    | 13,219,327           | 559,131                 | -                            | 13,778,458                              | -  | 443,630      | 14,222,088        | 3.9%                           |
| Collier   | 010314400            | Physicians Regional Medical Center - Pine Ridge                 | All Other        | 442   | 1,782     | 45,949,549       | 1.38                    | 1.39                    | 2,136,390            | 230,738                 | -                            | 2,367,128                               | -  | -            | 2,367,128         | 9.7%                           |
| Collier   | 016431100            | Landmark Hospital of Southwest Florida                          | LTAC             | 6   | 61        | 1,260,839        | 2.22                    | 2.24                    | 87,629               | -                       | -                            | 87,629                                  | -  | -            | 87,629            | 0.0%                           |
| Columbia  | 010033100            | Shands Lake Shore Rgnl Med Cntr                                 | Rural            | 1,473   | 3,189     | 34,160,077       | 0.46                    | 0.46                    | 5,329,504            | 7,025                   | -                            | 5,336,530                               | -  | -            | 5,336,530         | 0.1%                           |
| Columbia  | 011976800            | Lake City Medical Center  | All Other        | 409   | 1,070     | 18,217,535       | 1.00                    | 1.01                    | 1,432,157            | -                       | -                            | 1,432,157                               | -  | -            | 1,432,157         | 0.0%                           |
| Dade      | 003226500            | West Kendall Baptist Hospital                                   | All Other        | 1,723   | 4,914     | 57,984,540       | 0.63                    | 0.64                    | 3,901,218            | 300,000                 | -                            | 4,201,218                               | -  | 222,408      | 4,423,626         | 6.8%                           |
| Dade      | 009728200            | Mercy Hospital  | All Other        | 100   | 458       | 1,946,272        | 0.74                    | 0.75                    | 258,887              | -                       | -                            | 258,887                                 | -  | -            | 258,887           | 0.0%                           |
| Dade      | 010035800            | Baptist Hospital of Miami                                       | All Other        | 4,855   | 25,228    | 341,592,020      | 1.04                    | 1.04                    | 19,775,156           | 7,189,133               | -                            | 26,964,290                              | -  | -            | 26,964,290        | 26.7%                          |
| Dade      | 010041200            | Hialeah Hospital  | All Other        | 4,141   | 13,601    | 200,739,008      | 0.67                    | 0.68                    | 9,870,764            | 578,140                 | -                            | 10,448,905                              | 475,473                                  | -            | 10,924,377        | 5.3%                           |
| Dade      | 010042100            | Jackson Memorial Hospital                                       | All Other        | 25,350  | 151,520   | 1,439,390,250    | 1.30                    | 1.31                    | 131,031,965          | 42,047,267              | 22,421,543                   | 195,500,775                             | 63,870,752                               | 12,359,550   | 271,731,077       | 15.5%                          |
| Dade      | 010046300            | Mount Sinai Medical Center                                      | All Other        | 3,447   | 16,806    | 148,104,244      | 0.88                    | 0.89                    | 11,042,349           | 1,333,695               | -                            | 12,376,044                              | -  | 2,431,962    | 14,808,006        | 9.0%                           |
| Dade      | 010047100            | University of Miami Hospital and Clinics                        | All Other        | 2,308   | 14,557    | 280,877,299      | 1.63                    | 1.64                    | 13,230,781           | 3,817,371               | -                            | 17,048,152                              | -  | 3,184,978    | 20,233,130        | 18.9%                          |
| Dade      | 010049800            | North Shore Medical Center                                      | All Other        | 6,907   | 29,819    | 459,901,267      | 0.93                    | 0.94                    | 23,811,067           | 2,346,997               | -                            | 26,158,064                              | 603,831                                  | -            | 26,761,896        | 8.8%                           |
| Dade      | 010053600            | Larkin Community Hospital Palm Springs Campus                   | All Other        | 366   | 2,287     | 17,667,472       | 1.14                    | 1.15                    | 1,469,509            | 207,541                 | -                            | 1,677,049                               | -  | 1,096,491    | 2,773,540         | 7.5%                           |
| Dade      | 010058700            | South Miami Hospital  | All Other        | 3,800   | 15,881    | 193,947,146      | 0.97                    | 0.98                    | 16,939,743           | 3,670,637               | -                            | 20,610,380                              | -  | -            | 20,610,380        | 17.8%                          |
| Dade      | 010060900            | Nicklaus Children's Hospital                                    | High Mcaid       | 5,833   | 36,693    | 594,694,692      | 1.59                    | 1.60                    | 70,635,332           | 42,578,553              | 2,827,077                    | 116,040,962                             | 24,876,728                               | 2,681,579    | 143,599,268       | 29.7%                          |
| Dade      | 010062500            | Westchester General Hospital                                    | All Other        | 541   | 2,945     | 12,256,852       | 0.86                    | 0.87                    | 1,622,272            | 31,079                  | -                            | 1,653,351                               | -  | 121,126      | 1,998,899         | 1.6%                           |
| Dade      | 010170200            | West Gables Rehabilitation Hospital                             | Rehab            | 140   | 1,823     | 6,051,878        | 1.22                    | 1.23                    | 2,330,775            | 6,824                   | -                            | 2,337,599                               | -  | -            | 2,337,599         | 0.3%                           |
| Dade      | 010226100            | Homestead Hospital  | All Other        | 3,354   | 8,645     | 106,565,532      | 0.64                    | 0.65                    | 7,648,564            | 641,084                 | -                            | 8,289,648                               | 4,384,713                                | -            | 12,674,361        | 5.1%                           |
| Dade      | 010270900            | Encompass Health Rehabilitation Hospital of Miami               | Rehab            | 27  | 329       | 956,235          | 1.82                    | 1.83                    | 583,165              | 9,380                   | -                            | 592,545                                 | -  | -            |                   |                                |



|              |                      |   |                  |        |        |                 |                         |                         |                      | Simulated Payments Based on Version 38 APR DRGs |                              |   |  |             |                   |                                |                 |  |
|--------------|----------------------|---|------------------|--------|--------|-----------------|-------------------------|-------------------------|----------------------|---|------------------------------|---|--|-------------|-------------------|--------------------------------|-----------------|--|
|              |                      |   |                  |        |        |                 |                         |                         |                      | (I)   | (J)                          | (K)                                     | (L) = (I) + (J) + (K)                    | (E)         | (F)               | (M) = (L) + (E) + (F)          | (N) = (J) / (M) |  |
| County       | Provider Medicaid ID | Provider Name   | Pricing Category | Stays  | Days   | Trended Charges | V38 Casemix Re-centered | V38 Casemix w DCI Trend | V38 DRG Base Payment | V38 DRG Outlier Payment                         | V38 DRG Trauma Supp. Payment | V38 Total DRG Payment - Excl. GME & ARE | Automatic Rate Enhancement (ARE) Payment | GME Payment | V38 Payment Total | V38 Outlier Payment Percentage |                 |  |
| Escambia     | 010076500            | Ascension Sacred Heart Pensacola                              | All Other        | 7,477  | 36,408 | 264,003,651     | 0.98                    | 0.99                    | 32,500,488           | 2,704,655                                       | 3,575,054                    | 38,780,196                              | 7,519,149                                | 1,108,062   | 47,407,408        | 5.7%                           |                 |  |
| Escambia     | 010368300            | Select Specialty Hospital - Pensacola                         | LTAC             | 15     | 356    | 2,149,921       | 2.12                    | 2.14                    | 242,944              | 9,574   | -                            | 252,518                                 | -  | -           | 252,518           | 3.8%                           |                 |  |
| Escambia     | 011321200            | West Florida Hospital   | All Other        | 2,536  | 10,229 | 133,993,871     | 0.86                    | 0.87                    | 7,910,076            | -   | -                            | 7,910,076                               | -  | -           | 7,910,076         | 0.0%                           |                 |  |
| Flagler      | 010189300            | AdventHealth Palm Coast                                       | Rural            | 484    | 2,296  | 22,892,261      | 1.34                    | 1.35                    | 5,010,565            | -   | -                            | 5,010,565                               | -  | -           | 5,010,565         | 0.0%                           |                 |  |
| Franklin     | 010080300            | George E Weems Memorial Hospital                              | Rural            | 10     | 19     | 97,103          | 0.64                    | 0.65                    | 49,178               | -   | -                            | 49,178                                  | -  | -           | 49,178            | 0.0%                           |                 |  |
| Gulf         | 002012700            | Ascension Sacred Heart Gulf                                   | Rural            | 41     | 111    | 534,982         | 1.12                    | 1.13                    | 337,460              | -   | -                            | 337,460                                 | -  | -           | 337,460           | 0.0%                           |                 |  |
| Hardee       | 010260100            | AdventHealth Wauchula   | Rural            | 25     | 58     | 582,346         | 0.87                    | 0.87                    | 167,238              | -   | -                            | 167,238                                 | -  | -           | 167,238           | 0.0%                           |                 |  |
| Hendry       | 010086200            | Hendry Regional Medical Center                                | Rural            | 47     | 89     | 800,197         | 1.05                    | 1.06                    | 372,880              | -   | -                            | 372,880                                 | -  | -           | 372,880           | 0.0%                           |                 |  |
| Hernando     | 010087100            | Bayfront Health Brooksville                                   | All Other        | 1,682  | 5,096  | 132,676,244     | 0.89                    | 0.89                    | 5,595,494            | 75,546  | -                            | 5,671,039                               | -  | -           | 5,671,039         | 1.3%                           |                 |  |
| Hernando     | 010355100            | Encompass Health Rehabilitation Hospital of Spring Hill       | Rehab            | 6      | 106    | 235,387         | 1.74                    | 1.75                    | 124,896              | -   | -                            | 124,896                                 | -  | -           | 124,896           | 0.0%                           |                 |  |
| Hernando     | 012007300            | Oak Hill Hospital   | All Other        | 2,796  | 8,053  | 174,889,933     | 0.70                    | 0.71                    | 6,996,239            | 194,173   | -                            | 7,190,412                               | -  | 1,526,279   | 8,716,691         | 2.2%                           |                 |  |
| Highlands    | 010089700            | Highlands Regional Medical Center                             | All Other        | 798    | 1,980  | 27,955,573      | 0.58                    | 0.59                    | 1,643,963            | 4,611   | -                            | 1,648,574                               | -  | -           | 1,648,574         | 0.3%                           |                 |  |
| Highlands    | 010090100            | AdventHealth Lake Placid                                      | All Other        | 2,246  | 5,891  | 64,923,026      | 0.79                    | 0.80                    | 6,174,578            | -   | -                            | 6,174,578                               | -  | -           | 6,174,578         | 0.0%                           |                 |  |
| Hillsborough | 002576600            | Shriners Hospital for Children - Tampa                        | All Other        | 101    | 204    | 4,549,825       | 2.50                    | 2.52                    | 1,061,298            | -   | -                            | 1,061,298                               | 232,269                                  | -           | 1,293,567         | 0.0%                           |                 |  |
| Hillsborough | 010094300            | AdventHealth Carrollwood                                      | All Other        | 552    | 2,002  | 33,388,921      | 1.28                    | 1.29                    | 2,482,163            | 3,080   | -                            | 2,485,243                               | -  | 38,239      | 2,523,482         | 0.1%                           |                 |  |
| Hillsborough | 010097802            | St. Joseph's Hospital   | All Other        | 18,932 | 69,477 | 730,690,380     | 0.97                    | 0.98                    | 80,236,094           | 7,787,754                                       | 8,839,685                    | 96,863,533                              | 1,783,603                                | -           | 98,647,136        | 7.9%                           |                 |  |
| Hillsborough | 010098600            | South Florida Baptist Hospital                                | All Other        | 1,966  | 4,542  | 52,333,080      | 0.79                    | 0.80                    | 5,423,087            | 25,809  | -                            | 5,448,896                               | -  | -           | 5,448,896         | 0.5%                           |                 |  |
| Hillsborough | 010099400            | Tampa General Hospital  | All Other        | 14,034 | 69,388 | 953,025,001     | 1.11                    | 1.12                    | 62,465,786           | 10,616,762                                      | 10,665,646                   | 83,748,194                              | 20,931,688                               | 4,953,205   | 109,633,086       | 9.7%                           |                 |  |
| Hillsborough | 010102800            | AdventHealth Tampa  | All Other        | 3,634  | 16,859 | 226,108,338     | 1.19                    | 1.20                    | 16,468,871           | 665,988   | -                            | 17,134,859                              | -  | 187,927     | 17,322,786        | 3.8%                           |                 |  |
| Hillsborough | 010230000            | Kindred Hospital-Central Tampa                                | LTAC             | 46     | 1,727  | 16,344,602      | 3.03                    | 3.06                    | 1,062,324            | 419,914   | -                            | 1,482,239                               | -  | -           | 1,482,239         | 28.3%                          |                 |  |
| Hillsborough | 010234200            | Kindred Hospital-Bay Area-Tampa                               | LTAC             | 33     | 2,080  | 15,289,763      | 3.23                    | 3.26                    | 812,110              | 513,187   | -                            | 1,325,298                               | -  | -           | 1,325,298         | 38.7%                          |                 |  |
| Hillsborough | 011279800            | Memorial Hospital of Tampa                                    | All Other        | 636    | 3,528  | 43,968,419      | 0.93                    | 0.93                    | 2,046,880            | 96,774  | -                            | 2,143,654                               | -  | -           | 2,143,654         | 4.5%                           |                 |  |
| Hillsborough | 011807900            | Brandon Regional Hospital                                     | All Other        | 6,379  | 18,787 | 324,128,802     | 0.75                    | 0.76                    | 19,039,150           | 183,736   | -                            | 19,222,887                              | -  | 1,824,936   | 21,047,823        | 0.9%                           |                 |  |
| Hillsborough | 011984900            | Tampa Community Hospital                                      | All Other        | 539    | 2,658  | 35,474,029      | 0.84                    | 0.85                    | 1,574,404            | 90,400  | -                            | 1,664,804                               | -  | -           | 1,664,804         | 5.4%                           |                 |  |
| Hillsborough | 011994600            | South Bay Hospital  | All Other        | 241    | 703    | 18,138,595      | 0.99                    | 1.00                    | 806,260              | -   | -                            | 806,260                                 | -  | -           | 806,260           | 0.0%                           |                 |  |
| Hillsborough | 012032400            | H. Lee Moffitt Cancer Center & Research Institute Hospital    | All Other        | 670    | 5,104  | 67,099,922      | 2.79                    | 2.81                    | 6,633,734            | 832,302   | -                            | 7,466,035                               | -  | 1,673,918   | 9,139,953         | 9.1%                           |                 |  |
| Holmes       | 010103600            | Doctors Memorial Hospital                                     | Rural            | 53     | 139    | 503,628         | 0.63                    | 0.64                    | 255,337              | -   | -                            | 255,337                                 | -  | -           | 255,337           | 0.0%                           |                 |  |
| Indian River | 010104400            | Cleveland Clinic Indian River Hospital                        | All Other        | 2,640  | 8,547  | 50,213,469      | 0.64                    | 0.64                    | 6,028,533            | 46,902  | -                            | 6,075,435                               | -  | -           | 6,075,435         | 0.8%                           |                 |  |
| Indian River | 012001400            | Steward Sebastian River Medical Center                        | All Other        | 170    | 896    | 18,719,657      | 1.44                    | 1.46                    | 873,468              | 6,500   | -                            | 879,968                                 | -  | -           | 879,968           | 0.7%                           |                 |  |
| Indian River | 012034100            | Encompass Health Rehabilitation Hospital of Treasure Coast    | Rehab            | 15     | 278    | 743,572         | 2.09                    | 2.10                    | 418,510              | -   | -                            | 418,510                                 | -  | -           | 418,510           | 0.0%                           |                 |  |
| Jackson      | 010106100            | Jackson Hospital  | Rural            | 854    | 1,847  | 4,555,796       | 0.49                    | 0.50                    | 3,240,448            | -   | -                            | 3,240,448                               | -  | -           | 3,240,448         | 0.0%                           |                 |  |
| Lake         | 010107900            | UF Health Leesburg Hospital Inc                               | All Other        | 2,487  | 7,713  | 40,736,779      | 0.64                    | 0.65                    | 5,706,465            | 113,427   | -                            | 5,819,892                               | -  | -           | 5,819,892         | 1.9%                           |                 |  |
| Lake         | 010108700            | Orlando Health South Lake Hospital                            | All Other        | 1,781  | 4,645  | 73,561,259      | 0.73                    | 0.73                    | 4,531,847            | 256,144   | -                            | 4,787,991                               | -  | -           | 4,787,991         | 5.3%                           |                 |  |
| Lake         | 010109500            | AdventHealth Waterman   | All Other        | 2,055  | 6,962  | 65,694,131      | 0.94                    | 0.95                    | 6,988,636            | 79,224  | -                            | 7,067,861                               | -  | -           | 7,067,861         | 1.1%                           |                 |  |
| Lee          | 010110900            | Lee Memorial Hospital   | All Other        | 9,429  | 33,934 | 354,307,278     | 1.06                    | 1.07                    | 45,619,187           | 2,216,713                                       | 5,019,456                    | 52,855,356                              | 9,422,091                                | 594,369     | 62,871,816        | 3.5%                           |                 |  |
| Lee          | 010111700            | Lehigh Regional Medical Center                                | All Other        | 258    | 800    | 16,842,364      | 1.73                    | 1.74                    | 1,536,919            | -   | -                            | 1,536,919                               | -  | -           | 1,536,919         | 0.0%                           |                 |  |
| Lee          | 011134100            | Gulf Coast Medical Center Lee Memorial Health System          | All Other        | 3,323  | 9,662  | 101,408,245     | 0.77                    | 0.78                    | 8,939,414            | 356,515   | -                            | 9,295,929                               | -  | -           | 9,295,929         | 3.8%                           |                 |  |
| Lee          | 011971700            | Cape Coral Hospital   | All Other        | 2,395  | 5,922  | 60,615,355      | 0.71                    | 0.72                    | 6,029,980            | 119,884   | -                            | 6,149,863                               | -  | -           | 6,149,863         | 1.9%                           |                 |  |
| Lee          | 013854800            | Select Specialty Hospital - Fort Myers                        | LTAC             | 9      | 250    | 3,117,956       | 2.72                    | 2.74                    | 167,922              | 133,333   | -                            | 301,255                                 | -  | -           | 301,255           | 44.3%                          |                 |  |
| Leon         | 010113300            | Tallahassee Memorial Hospital                                 | All Other        | 5,837  | 18,490 | 176,322,568     | 0.98                    | 0.98                    | 23,785,130           | 579,954   | 2,616,364                    | 26,981,448                              | -  | 1,256,293   | 28,237,741        | 2.1%                           |                 |  |
| Leon         | 010374800            | Select Specialty Hospital - Tallahassee                       | LTAC             | 11     | 161    | 1,003,461       | 2.06                    | 2.08                    | 159,168              | -   | -                            | 159,168                                 | -  | -           | 159,168           | 0.0%                           |                 |  |
| Leon         | 011980600            | Capital Regional Medical Center                               | All Other        | 3,327  | 9,297  | 134,109,899     | 0.81                    | 0.82                    | 9,642,612            | 175,707   | -                            | 9,818,318                               | -  | -           | 9,818,318         | 1.8%                           |                 |  |
| Leon         | 012033200            | Encompass Health Rehabilitation Hospital of Tallahassee       | Rehab            | 28     | 291    | 510,713         | 1.62                    | 1.64                    | 600,322              | -   | -                            | 600,322                                 | -  | -           | 600,322           | 0.0%                           |                 |  |
| Levy         | 010114100            | Regional General Hospital Williston                           | Rural            | 12     | 33     | 71,774          | 0.49                    | 0.50                    | 47,504               | -   | -                            | 47,504                                  | -  | -           | 47,504            | 0.0%                           |                 |  |
| Madison      | 010115000            | Madison County Memorial Hospital                              | Rural            | 30     | 67     | 468,715         | 0.75                    | 0.76                    | 176,275              | -   | -                            | 176,275                                 | -  | -           | 176,275           | 0.0%                           |                 |  |
| Manatee      | 010116800            | Manatee Memorial Hospital                                     | All Other        | 5,025  | 16,232 | 181,756,841     | 0.71                    | 0.71                    | 12,659,984           | 778,742   | -                            | 13,438,726                              | -  | 726,205     | 14,164,931        | 5.5%                           |                 |  |
| Manatee      | 010342000            | Lakewood Ranch Medical Center                                 | All Other        | 281    | 2,295  | 21,919,170      | 1.05                    | 1.06                    | 1,078,243            | 258,692   | -                            | 1,278,243                               | -  | -           | 1,278,243         | 20.2%                          |                 |  |
| Manatee      | 011021300            | Blake Medical Center  | All Other        | 885    | 6,489  | 145,060,341     | 1.86                    | 1.87                    | 5,804,282            | 1,670,043                                       | 638,480                      | 8,112,805                               | -  | 968,513     | 9,081,318         | 18.4%                          |                 |  |
| Marion       | 008369200            | Encompass Health Rehabilitation Hospital of Ocala             | Rehab            | 9      | 103    | 169,017         | 1.73                    | 1.75                    | 193,266              | -   | -                            | 193,266                                 | -  | -           | 193,266           | 0.0%                           |                 |  |
| Marion       | 010117600            | AdventHealth Ocala  | All Other        | 4,277  | 10,939 | 127,562,341     | 0.64                    | 0.64                    | 10,073,506           | 165,072   | -                            | 10,238,578                              | -  | -           | 10,238,578        | 1.6%                           |                 |  |
| Marion       | 010353500            | Kindred Hospital Ocala  | LTAC             | 1      | 27     | 112,031         | 1.55                    | 1.56                    | 11,791               | -   | -                            | 11,791                                  | -  | -           | 11,791            | 0.0%                           |                 |  |
| Marion       | 010988600            | Ocala Regional Medical Center                                 | All Other        | 1,854  | 11,225 | 233,973,222     | 1.72                    | 1.74                    | 11,561,734           | 1,501,344                                       | 1,271,791                    | 14,334,869                              | -  | 1,615,749   | 15,950,618        | 9.4%                           |                 |  |
| Martin       | 009587500            | Encompass Health Rehab Hospital an Affiliate of Martin Health | Rehab            | 5      | 91     | 218,164         | 1.84                    | 1.85                    | 114,644              | -   | -                            | 114,644                                 | -  | -           | 114,644           | 0.0%                           |                 |  |
| Martin       | 010118400            | Cleveland Clinic Martin North Hospital                        | All Other        | 3,653  | 14,011 | 112,590,301     | 0.71                    | 0.71                    | 9,661,156            | 89,229  | -                            | 9,750,385                               | -  | -           | 9,750,385         | 0.9%                           |                 |  |
| Monroe       | 010119200            | Lower Keys Medical Center                                     | Rural            | 733    | 2,304  | 24,894,594      | 0.56                    | 0.57                    | 3,134,639            | 19,895  | -                            | 3,154,535                               | -  | -           | 3,154,535         | 0.6%                           |                 |  |
| Monroe       | 010121400            | Mariners Hospital   | Rural            | 10     | 43     | 432,036         | 0.68                    | 0.69                    | 54,984               | -   | -                            | 54,984                                  | -  | -           | 54,984            | 0.0%                           |                 |  |
| Nassau       | 010123100            | Baptist Medical Center Nassau                                 | Rural            | 764    | 1,654  | 16,553,530      | 0.53                    | 0.53                    | 3,105,879            | 7,012   | -                            | 3,112,890                               | -  | -           | 3,112,890         | 0.2%                           |                 |  |
| Okaloosa     | 010125700            | Twin Cities Hospital  | All Other        | 123    | 446    | 12,195,863      | 0.99                    | 0.99                    | 410,769              | -   | -                            | 410,769                                 | -  | -           | 410,769           | 0.0%                           |                 |  |
| Okaloosa     | 010126500            | North Okaloosa Medical Center                                 | All Other        | 1,082  | 3,221  | 65,721,245      | 0.78                    | 0.79                    | 2,976,202            | -   | -                            | 2,976,202                               | -  | -           | 2,976,202         | 0.0%                           |                 |  |
| Okaloosa     | 011132500            | Fort Walton Beach Medical Center                              | All Other        | 2,505  | 13,716 | 232,752,271     | 0.94                    | 0.95                    | 8,409,411            | 326,519   | 925,035                      | 9,660,965                               | -  | -           | 9,660,965         | 3.4%                           |                 |  |
| Okeechobee   | 011975000            | Raulerson Hospital  | Rural            | 569    | 2,084  | 39,457,364      | 1.12                    | 1.12                    | 4,863,866            | 17,673  | -                            | 4,881,540                               | -  | -           | 4,881,540         | 0.4%                           |                 |  |
| OOS_Part     | 010199100            | Wiregrass Hospital  | All Other        | 12     | 47     | 75,289          | 0.91                    | 0.92                    | 38,724               | -   | -                            | 38,724                                  | -  | -           | 38,724            | 0.0%                           |                 |  |
| OOS_Part     | 010202400            | D.W.McMillan Memorial   | All Other        | 2      | 7      | 26,275          | 0.83                    | 0.84                    | 5,894                | -   | -                            | 5,894                                   | -  | -           | 5,894             | 0.0%                           |                 |  |
| OOS_Part     | 010204100            | Archbold Memorial Hospital                                    | All Other        | 10     | 43     | 176,112         | 0.73                    | 0.73                    | 27,320               |   |                              |   |  |             |                   |                                |                 |  |



|            |                      |   |                  |       |        |                 | Simulated Payments Based on Version 38 APR DRGs |                         |                      |                         |                              |   |  |                 |                   |                                |
|------------|----------------------|---|------------------|-------|--------|-----------------|---|-------------------------|----------------------|-------------------------|------------------------------|---|--|-----------------|-------------------|--------------------------------|
|            |                      |   |                  |       |        |                 | (I)   | (J)                     | (K)                  | (L) = (I) + (J) + (K)   | (E)                          | (F)                                     | (M) = (L) + (E) + (F)                    | (N) = (J) / (M) |                   |                                |
| County     | Provider Medicaid ID | Provider Name   | Pricing Category | Stays | Days   | Trended Charges | V38 Casemix Re-centered                         | V38 Casemix w DCI Trend | V38 DRG Base Payment | V38 DRG Outlier Payment | V38 DRG Trauma Supp. Payment | V38 Total DRG Payment - Excl. GME & ARE | Automatic Rate Enhancement (ARE) Payment | GME Payment     | V38 Payment Total | V38 Outlier Payment Percentage |
| Pasco      | 000949600            | AdventHealth Connerton  | LTAC             | 17    | 121    | 2,484,267       | 2.38  | 2.40                    | 297,529              | 18,056                  | -                            | 315,585                                 | -  | -               | 315,585           | 5.7%                           |
| Pasco      | 005456800            | AdventHealth Wesley Chapel                                    | All Other        | 729   | 1,806  | 28,737,339      | 0.87  | 0.88                    | 2,238,989            | -                       | -                            | 2,238,989                               | -  | 5,614           | 2,244,603         | 0.0%                           |
| Pasco      | 010149400            | AdventHealth Zephyrhills                                      | All Other        | 1,687 | 4,554  | 54,298,321      | 0.72  | 0.72                    | 4,232,665            | 12,588                  | -                            | 4,245,254                               | -  | -               | 4,245,254         | 0.3%                           |
| Pasco      | 010150800            | Morton Plant North Bay Hospital                               | All Other        | 2,660 | 10,255 | 75,516,855      | 0.85  | 0.86                    | 8,650,423            | 4,727                   | -                            | 8,655,150                               | -  | -               | 8,655,150         | 0.1%                           |
| Pasco      | 010552000            | Medical Center of Trinity                                     | All Other        | 3,626 | 11,000 | 193,456,165     | 0.73  | 0.74                    | 9,852,226            | 55,701                  | -                            | 9,907,927                               | -  | -               | 9,907,927         | 0.6%                           |
| Pasco      | 010959200            | AdventHealth Dade City  | All Other        | 173   | 602    | 14,053,748      | 1.34  | 1.36                    | 806,207              | 2,679                   | -                            | 808,885                                 | -  | -               | 808,885           | 0.3%                           |
| Pasco      | 011988100            | Regional Medical Center Bayonet Point                         | All Other        | 1,405 | 7,764  | 214,265,036     | 1.83  | 1.84                    | 9,056,373            | 242,473                 | 996,201                      | 10,295,047                              | -  | 1,389,663       | 11,684,710        | 2.1%                           |
| Pinellas   | 010151600            | John Hopkins All Children's Hospital                          | High Mcaid       | 4,143 | 27,756 | 528,290,004     | 2.26  | 2.28                    | 71,465,709           | 34,885,153              | 2,858,628                    | 109,209,490                             | 20,279,664                               | 1,406,570       | 130,895,724       | 26.7%                          |
| Pinellas   | 010154100            | Mease Dunedin Hospital  | All Other        | 999   | 4,716  | 30,083,325      | 0.84  | 0.85                    | 3,136,610            | 168,907                 | -                            | 3,305,517                               | -  | -               | 3,305,517         | 5.1%                           |
| Pinellas   | 010156700            | Bayfront Health St Petersburg                                 | All Other        | 5,795 | 16,168 | 251,144,344     | 0.68  | 0.68                    | 14,018,887           | 993,537                 | 1,543,733                    | 16,556,156                              | -  | 693,833         | 17,249,989        | 5.8%                           |
| Pinellas   | 010158300            | Morton Plant Hospital   | All Other        | 4,423 | 17,127 | 169,788,985     | 0.93  | 0.94                    | 14,661,780           | 627,627                 | -                            | 15,289,407                              | -  | 418,409         | 15,707,816        | 4.0%                           |
| Pinellas   | 010161300            | AdventHealth North Pinellas                                   | All Other        | 549   | 2,142  | 24,245,800      | 1.28  | 1.29                    | 2,423,684            | 80,244                  | -                            | 2,503,928                               | -  | -               | 2,503,928         | 3.2%                           |
| Pinellas   | 010175300            | Encompass Health Rehabilitation Hospital of Largo             | Rehab            | 39    | 428    | 910,045         | 2.13  | 2.14                    | 813,353              | -                       | -                            | 813,353                                 | -  | -               | 813,353           | 0.0%                           |
| Pinellas   | 010276800            | Kindred Hospital-Bay Area-St Petersburg                       | LTAC             | 44    | 1,599  | 15,036,891      | 3.41  | 3.44                    | 1,139,763            | 286,845                 | -                            | 1,426,608                               | -  | -               | 1,426,608         | 20.1%                          |
| Pinellas   | 010372100            | BayCare Alliant Hospital                                      | LTAC             | 22    | 332    | 6,848,475       | 4.84  | 4.88                    | 767,524              | -                       | -                            | 1,020,721                               | -  | -               | 1,020,721         | 24.8%                          |
| Pinellas   | 010823300            | Windmoor Healthcare of Clearwater                             | All Other        | 808   | 3,270  | 9,549,318       | 0.66  | 0.67                    | 1,893,798            | -                       | -                            | 1,893,798                               | -  | 599,082         | 4,603,601         | 3.4%                           |
| Pinellas   | 011519300            | Northside Hospital  | All Other        | 894   | 4,505  | 128,067,286     | 1.85  | 1.87                    | 5,762,065            | 168,574                 | -                            | 5,930,638                               | -  | 516,289         | 6,446,927         | 2.6%                           |
| Pinellas   | 011974100            | Largo Medical Center  | All Other        | 1,972 | 11,430 | 174,504,085     | 1.20  | 1.21                    | 8,257,649            | 343,757                 | -                            | 8,601,406                               | -  | 1,749,869       | 10,351,275        | 3.3%                           |
| Pinellas   | 012008100            | Mease Countryside Hospital                                    | All Other        | 2,919 | 8,698  | 76,876,088      | 0.71  | 0.72                    | 7,938,167            | 48,556                  | -                            | 7,986,723                               | -  | -               | 7,986,723         | 0.6%                           |
| Pinellas   | 012010300            | St. Petersburg General Hospital                               | All Other        | 1,286 | 4,122  | 92,786,540      | 0.85  | 0.86                    | 3,846,935            | 157,583                 | -                            | 4,004,519                               | -  | -               | 4,004,519         | 3.4%                           |
| Pinellas   | 012011100            | Palms of Pasadena Hospital                                    | All Other        | 292   | 1,684  | 35,269,891      | 1.45  | 1.46                    | 1,484,826            | 127,199                 | -                            | 1,612,025                               | -  | -               | 1,612,025         | 7.9%                           |
| Pinellas   | 012022700            | St. Anthony's Hospital  | All Other        | 2,956 | 13,745 | 151,805,205     | 1.22  | 1.23                    | 12,750,319           | 608,498                 | -                            | 13,358,817                              | -  | -               | 13,358,817        | 4.6%                           |
| Polk       | 009268300            | Poinciana Medical Center                                      | All Other        | 499   | 1,536  | 47,560,981      | 1.06  | 1.07                    | 1,854,902            | -                       | -                            | 1,854,902                               | -  | -               | 1,854,902         | 0.0%                           |
| Polk       | 010164800            | Lakeland Regional Medical Center                              | All Other        | 8,695 | 33,119 | 359,670,940     | 0.90  | 0.91                    | 29,762,136           | 1,824,567               | 3,273,835                    | 34,860,537                              | -  | -               | 34,860,537        | 5.2%                           |
| Polk       | 010166400            | AdventHealth Lake Wales                                       | All Other        | 359   | 2,157  | 35,404,332      | 1.23  | 1.24                    | 1,568,992            | 244,292                 | -                            | 1,813,284                               | -  | -               | 1,813,284         | 13.5%                          |
| Polk       | 010169900            | Winter Haven Hospital   | All Other        | 4,631 | 14,725 | 148,737,801     | 0.74  | 0.74                    | 12,432,938           | 210,663                 | -                            | 12,643,601                              | -  | -               | 12,643,601        | 1.7%                           |
| Polk       | 010228800            | AdventHealth Heart Of Florida                                 | All Other        | 1,975 | 5,345  | 127,464,666     | 0.65  | 0.65                    | 4,533,067            | 74,826                  | -                            | 4,607,894                               | -  | -               | 4,607,894         | 1.6%                           |
| Polk       | 012041300            | Bartow Regional Medical Center                                | All Other        | 347   | 1,217  | 18,166,016      | 1.18  | 1.19                    | 1,432,727            | 23,345                  | -                            | 1,456,072                               | -  | -               | 1,456,072         | 1.6%                           |
| Putnam     | 011351400            | Putnam Community Medical Center                               | Rural            | 1,012 | 2,776  | 38,806,799      | 0.91  | 0.92                    | 7,120,380            | -                       | -                            | 7,120,380                               | -  | -               | 7,120,380         | 0.0%                           |
| Santa Rosa | 010173700            | Jay Hospital  | Rural            | 34    | 134    | 830,192         | 0.81  | 0.82                    | 219,241              | -                       | -                            | 219,241                                 | -  | -               | 219,241           | 0.0%                           |
| Santa Rosa | 010174500            | Santa Rosa Medical Center                                     | All Other        | 942   | 2,974  | 38,626,058      | 0.75  | 0.75                    | 2,459,928            | 18,076                  | -                            | 2,478,004                               | -  | -               | 2,478,004         | 0.7%                           |
| Sarasota   | 010176100            | Sarasota Memorial Hospital                                    | All Other        | 6,028 | 23,342 | 263,853,414     | 0.92  | 0.93                    | 20,865,505           | 2,143,804               | 2,303,829                    | 25,313,138                              | -  | 532,322         | 25,845,460        | 8.3%                           |
| Sarasota   | 010253900            | Englewood Community Hospital                                  | All Other        | 131   | 552    | 10,700,274      | 1.31  | 1.32                    | 580,982              | -                       | -                            | 580,982                                 | -  | -               | 580,982           | 0.0%                           |
| Sarasota   | 010356000            | Pam Specialty Hospital of Sarasota                            | LTAC             | 2     | 61     | 619,259         | 6.43  | 6.50                    | 84,316               | 4,022                   | -                            | 88,338                                  | -  | -               | 88,338            | 4.6%                           |
| Sarasota   | 011973300            | Venice Regional Bayfront Health                               | All Other        | 232   | 1,164  | 19,778,504      | 1.57  | 1.58                    | 1,269,862            | 88,062                  | -                            | 1,357,924                               | -  | -               | 1,357,924         | 6.5%                           |
| Sarasota   | 011995400            | Doctor's Hospital of Sarasota                                 | All Other        | 232   | 1,286  | 20,673,788      | 1.28  | 1.30                    | 1,055,097            | 47,303                  | -                            | 1,102,399                               | -  | -               | 1,102,399         | 4.3%                           |
| Sarasota   | 012038300            | Encompass Health Rehabilitation Hospital of Sarasota          | Rehab            | 16    | 219    | 574,515         | 2.05  | 2.07                    | 411,965              | -                       | -                            | 411,965                                 | -  | -               | 411,965           | 0.0%                           |
| Seminole   | 010178800            | Central Florida Regional Hospital                             | All Other        | 1,624 | 6,312  | 119,618,631     | 1.20  | 1.21                    | 6,937,482            | 118,791                 | 763,123                      | 7,819,396                               | -  | -               | 7,819,396         | 1.5%                           |
| Seminole   | 014235500            | Encompass Health Rehabilitation Hospital of Altamonte Springs | Rehab            | 9     | 188    | 364,456         | 2.09  | 2.11                    | 258,613              | -                       | -                            | 258,613                                 | -  | -               | 258,613           | 0.0%                           |
| Seminole   | 021094100            | Oviedo Medical Center   | All Other        | 419   | 1,354  | 15,296,497      | 0.74  | 0.75                    | 1,089,682            | 29,502                  | -                            | 1,119,184                               | -  | -               | 1,119,184         | 2.6%                           |
| St. Johns  | 010171100            | Flagler Hospital  | Rural            | 2,699 | 8,823  | 75,759,275      | 0.68  | 0.69                    | 14,604,795           | 330,778                 | -                            | 14,935,573                              | -  | -               | 14,935,573        | 2.2%                           |
| St. Lucie  | 004805200            | Port St. Lucie Hospital                                       | All Other        | 23    | 201    | 404,348         | 0.54  | 0.54                    | 43,830               | -                       | -                            | 43,830                                  | -  | -               | 43,830            | 0.0%                           |
| St. Lucie  | 011969500            | Lawnwood Regional Medical Center & Heart Institute            | All Other        | 5,033 | 26,587 | 452,742,143     | 1.09  | 1.10                    | 21,675,743           | 1,182,829               | 2,393,661                    | 25,252,233                              | -  | -               | 25,252,233        | 4.7%                           |
| St. Lucie  | 011997100            | St. Lucie Medical Center                                      | All Other        | 1,920 | 6,055  | 83,619,806      | 0.61  | 0.62                    | 4,178,714            | 12,279                  | -                            | 4,190,992                               | -  | 659,138         | 4,850,130         | 0.3%                           |
| Sumter     | 010317900            | UF Health The Villages Hospital                               | All Other        | 377   | 2,091  | 16,005,961      | 1.24  | 1.25                    | 1,597,517            | 82,365                  | -                            | 1,679,882                               | -  | -               | 1,679,882         | 4.9%                           |
| Sumter     | 013800200            | Select Specialty Hospital -The Villages Inc                   | LTAC             | 1     | 1      | 123,140         | 1.55  | 1.56                    | 11,752               | -                       | -                            | 11,752                                  | -  | -               | 11,752            | 0.0%                           |
| Suwannee   | 010179600            | Lake City Medical Center Suwannee Campus                      | Rural            | 131   | 365    | 3,452,072       | 0.79  | 0.80                    | 751,938              | -                       | -                            | 751,938                                 | -  | -               | 751,938           | 0.0%                           |
| Taylor     | 010180000            | Doctor's Memorial Hospital                                    | Rural            | 109   | 274    | 1,384,473       | 0.86  | 0.87                    | 727,406              | -                       | -                            | 727,406                                 | -  | -               | 727,406           | 0.0%                           |
| Union      | 010822700            | Lake Butler Hospital  | Rural            | 4     | 13     | 67,429          | 0.73  | 0.73                    | 23,371               | -                       | -                            | 23,371                                  | -  | -               | 23,371            | 0.0%                           |
| Volusia    | 010182600            | AdventHealth Fish Memorial                                    | All Other        | 740   | 3,082  | 32,395,191      | 1.27  | 1.28                    | 3,283,338            | 66,100                  | -                            | 3,349,438                               | -  | -               | 3,349,438         | 2.0%                           |
| Volusia    | 010183400            | AdventHealth New Smyrna Beach                                 | All Other        | 336   | 1,797  | 16,268,856      | 1.40  | 1.41                    | 1,636,614            | 190,699                 | -                            | 1,827,313                               | -  | -               | 1,827,313         | 10.4%                          |
| Volusia    | 010184200            | Halifax Health Medical Center                                 | All Other        | 5,477 | 26,516 | 169,117,727     | 0.88  | 0.89                    | 18,119,521           | 1,666,787               | 2,003,033                    | 21,789,340                              | -  | 478,347         | 22,267,687        | 7.5%                           |
| Volusia    | 010186900            | AdventHealth Daytona Beach                                    | All Other        | 2,949 | 10,175 | 83,917,316      | 0.81  | 0.81                    | 8,346,233            | 53,291                  | -                            | 8,399,525                               | -  | -               | 8,399,525         | 0.6%                           |
| Volusia    | 010187700            | AdventHealth Deland   | All Other        | 1,726 | 5,015  | 47,696,567      | 0.76  | 0.76                    | 4,563,524            | -                       | -                            | 4,563,524                               | -  | -               | 4,563,524         | 0.0%                           |
| Volusia    | 016486300            | Select Specialty Hospital - Daytona Beach                     | LTAC             | 6     | 59     | 904,391         | 2.84  | 2.86                    | 86,143               | 1,441                   | -                            | 87,584                                  | -  | -               | 87,584            | 1.6%                           |
| Volusia    | 017009200            | Memorial Health Systems, Inc.                                 | All Other        | 12    | 129    | 836,868         | 1.36  | 1.37                    | 57,635               | -                       | -                            | 57,635                                  | -  | -               | 57,635            | 0.0%                           |
| Walton     | 010188500            | Healthmark Regional Medical Center                            | Rural            | 52    | 213    | 812,448         | 0.94  | 0.95                    | 386,657              | -                       | -                            | 386,657                                 | -  | -               | 386,657           | 0.0%                           |
| Walton     | 010323300            | Ascension Sacred Heart Emerald Coast                          | Rural            | 1,591 | 3,915  | 28,050,970      | 0.48  | 0.48                    | 5,838,387            | 5,128                   | -                            | 5,843,515                               | -  | -               | 5,843,515         | 0.1%                           |
| Washington | 010190700            | Northwest Florida Community Hospital                          | Rural            | 71    | 234    | 1,348,627       | 0.96  | 0.97                    | 482,236              | -                       | -                            | 482,236                                 | -  | -               | 482,236           | 0.0%                           |



State of Florida Medicaid - Agency for Health Care Administration (Agency)  
 Impact of 3M™ APR DRG Version 38 Updates on Simulated Hospital Inpatient Payments  
 July 2020 Through June 2021 (SFY 2020-2021) Hospital Payment Rates  
 Simulated Payments and Impacts by Hospital

| County    | Provider Medicaid ID | Provider Name   | Pricing Category | Stays   | Days      | Trended Charges  | Impact on Simulated Payments   |                                |
|-----------|----------------------|---|------------------|---------|-----------|------------------|--------------------------------|--------------------------------|
|           |                      |   |                  |         |           |                  | Total Payment Change (Dollars) | Total Payment Change (Percent) |
|           |                      |   |                  | 523,973 | 2,234,929 | \$29,121,516,402 | -\$16,255,105                  | -0.5%                          |
| Alachua   | 010003000            | UF Health Shands Hospital                                       | All Other        | 13,710  | 67,221    | \$738,739,146    | (\$1,344,220)                  | -0.8%                          |
| Alachua   | 010377200            | Select Specialty Hospital - Gainesville                         | LTAC             | 5       | 98        | 482,355          | (4,647)                        | -4.8%                          |
| Alachua   | 010862600            | North Florida Regional Medical Center                           | All Other        | 5,008   | 16,528    | 258,101,169      | 18,908                         | 0.1%                           |
| Alachua   | 103449400            | UF Health Rehab Hospital  | Rehab            | 48      | 446       | 1,982,593        | 406,487                        | 59.1%                          |
| Baker     | 010004800            | Ed Fraser Memorial Hospital                                     | Rural            | 19      | 71        | 544,734          | (2,513)                        | -2.5%                          |
| Bay       | 010006400            | Ascension Sacred Heart Bay                                      | All Other        | 1,245   | 5,725     | 57,533,582       | 24,239                         | 0.4%                           |
| Bay       | 010275000            | Encompass Health Rehabilitation Hospital of Panama City         | Rehab            | 16      | 155       | 320,939          | 73,854                         | 29.8%                          |
| Bay       | 010343800            | Select Specialty Hospital - Panama City                         | LTAC             | 8       | 102       | 1,254,498        | (1,814)                        | -1.2%                          |
| Bay       | 011761700            | Gulf Coast Regional Medical Center                              | All Other        | 4,162   | 10,807    | 154,857,405      | (305,369)                      | -2.1%                          |
| Bradford  | 010007200            | North Florida Regional Medical Center Starke Campus             | Rural            | 108     | 376       | 3,432,666        | (13,127)                       | -1.7%                          |
| Brevard   | 001681500            | Kindred Hospital Melbourne                                      | LTAC             | 7       | 174       | 1,127,866        | (3,173)                        | -2.1%                          |
| Brevard   | 003158800            | Viera Hospital  | All Other        | 150     | 860       | 9,288,954        | (18,954)                       | -2.3%                          |
| Brevard   | 003297500            | Palm Bay Hospital   | All Other        | 531     | 2,392     | 25,837,679       | (39,514)                       | -1.6%                          |
| Brevard   | 010008100            | Holmes Regional Medical Center                                  | All Other        | 4,784   | 18,188    | 182,552,660      | (170,450)                      | -0.9%                          |
| Brevard   | 010009900            | Cape Canaveral Hospital   | All Other        | 1,347   | 4,212     | 35,546,855       | 33,376                         | 1.0%                           |
| Brevard   | 010010200            | Parrish Medical Center  | All Other        | 1,359   | 3,960     | 33,273,909       | (23,350)                       | -0.7%                          |
| Brevard   | 010011100            | Rockledge Regional Medical Center                               | All Other        | 1,543   | 4,866     | 76,106,028       | 43,516                         | 1.0%                           |
| Brevard   | 010320900            | Melbourne Regional Medical Center                               | All Other        | 162     | 571       | 17,486,754       | (8,595)                        | -1.0%                          |
| Brevard   | 012042100            | Sea Pines Rehabilitation Hospital Affiliate of Encompass Health | Rehab            | 20      | 264       | 599,575          | 146,504                        | 54.3%                          |
| Broward   | 010012900            | Broward Health Medical Center                                   | All Other        | 9,823   | 55,733    | 444,652,744      | (1,004,502)                    | -1.3%                          |
| Broward   | 010018800            | Holy Cross Hospital   | All Other        | 1,472   | 7,682     | 60,214,009       | (30,305)                       | -0.4%                          |
| Broward   | 010019600            | Kindred Hospital-South Florida-Ft Lauderdale                    | LTAC             | 10      | 270       | 2,352,010        | (6,815)                        | -2.5%                          |
| Broward   | 010020000            | Memorial Regional Hospital                                      | All Other        | 11,296  | 68,253    | 991,367,603      | (912,050)                      | -0.8%                          |
| Broward   | 010021800            | Broward Health North  | All Other        | 1,696   | 12,426    | 115,779,278      | 102,493                        | 0.8%                           |
| Broward   | 010191500            | Kindred Hospital-South Florida-Hollywood                        | LTAC             | 20      | 587       | 5,657,181        | (13,257)                       | -1.7%                          |
| Broward   | 010220200            | Cleveland Clinic Hospital                                       | All Other        | 187     | 1,274     | 14,167,712       | (30,672)                       | -1.0%                          |
| Broward   | 010222900            | Memorial Hospital Pembroke                                      | All Other        | 988     | 4,499     | 71,766,799       | 5,425                          | 0.1%                           |
| Broward   | 010240700            | St. Anthony's Rehabilitation Hospital                           | Rehab            | 3       | 37        | 90,156           | 30,366                         | 54.3%                          |
| Broward   | 010252100            | Memorial Hospital West  | All Other        | 4,713   | 18,789    | 276,854,593      | (263,750)                      | -1.6%                          |
| Broward   | 010345400            | Memorial Hospital Miramar                                       | All Other        | 3,495   | 9,835     | 98,109,314       | (69,837)                       | -1.0%                          |
| Broward   | 010459100            | Northwest Medical Center  | All Other        | 2,876   | 13,184    | 233,293,033      | (344,100)                      | -2.7%                          |
| Broward   | 010821900            | Broward Health Imperial Point                                   | All Other        | 1,070   | 7,001     | 40,800,752       | 190,517                        | 4.7%                           |
| Broward   | 011230500            | Westside Regional Medical Center                                | All Other        | 857     | 4,729     | 124,774,005      | (34,299)                       | -0.7%                          |
| Broward   | 011280100            | University Hospital and Medical Center                          | All Other        | 1,418   | 7,657     | 93,209,777       | 261,704                        | 6.0%                           |
| Broward   | 012000600            | Plantation General Hospital                                     | All Other        | 8,501   | 37,941    | 611,414,691      | (200,163)                      | -0.6%                          |
| Broward   | 012027800            | Encompass Health Rehabilitation Hospital of Sunrise             | Rehab            | 33      | 626       | 1,636,025        | 383,200                        | 84.2%                          |
| Broward   | 012040500            | Broward Health Coral Springs                                    | All Other        | 3,552   | 12,884    | 76,904,925       | (108,130)                      | -1.0%                          |
| Broward   | 016972100            | St John's Rehabilitation Hospital                               | All Other        | 36      | 423       | 1,159,892        | 126,509                        | 104.4%                         |
| Calhoun   | 010026900            | Calhoun-Liberty Hospital  | Rural            | 22      | 56        | 183,400          | (1,817)                        | -1.5%                          |
| Charlotte | 010027700            | Bayfront Health Punta Gorda                                     | All Other        | 443     | 2,461     | 24,508,175       | 30,912                         | 2.0%                           |
| Charlotte | 010028500            | Bayfront Health Port Charlotte                                  | All Other        | 2,068   | 5,427     | 81,333,392       | (49,824)                       | -1.0%                          |
| Charlotte | 011746300            | Fawcett Memorial Hospital                                       | All Other        | 486     | 3,813     | 80,937,989       | (1,394)                        | 0.0%                           |
| Citrus    | 010219900            | Citrus Memorial Hospital  | All Other        | 1,295   | 3,791     | 85,875,493       | (2,912)                        | -0.1%                          |
| Citrus    | 011998900            | Bayfront Health Seven Rivers                                    | All Other        | 840     | 1,980     | 37,909,196       | (7,361)                        | -0.3%                          |
| Clay      | 009701300            | Ascension St. Vincent's Clay County                             | All Other        | 1,142   | 2,833     | 27,973,933       | 6,128                          | 0.2%                           |
| Clay      | 010267900            | Kindred Hospital-North Florida                                  | LTAC             | 12      | 689       | 4,879,279        | (4,520)                        | -0.9%                          |
| Clay      | 011174100            | Orange Park Medical Center                                      | All Other        | 4,686   | 17,725    | 364,503,713      | (79,667)                       | -0.4%                          |
| Collier   | 010031500            | Naples Community Hospital                                       | All Other        | 5,467   | 18,035    | 117,168,418      | (165,298)                      | -1.1%                          |
| Collier   | 010314400            | Physicians Regional Medical Center - Pine Ridge                 | All Other        | 442     | 1,782     | 45,949,549       | (4,509)                        | -0.2%                          |
| Collier   | 016431100            | Landmark Hospital of Southwest Florida                          | LTAC             | 6       | 61        | 1,260,839        | (1,533)                        | -1.7%                          |
| Columbia  | 010033100            | Shands Lake Shore Rgnl Med Cntr                                 | Rural            | 1,473   | 3,189     | 34,160,077       | 122,319                        | 2.3%                           |
| Columbia  | 011976800            | Lake City Medical Center  | All Other        | 409     | 1,070     | 18,217,535       | (24,156)                       | -1.7%                          |
| Dade      | 003226500            | West Kendall Baptist Hospital                                   | All Other        | 1,723   | 4,914     | 57,984,540       | 42,523                         | 1.0%                           |
| Dade      | 009728200            | Mercy Hospital  | All Other        | 100     | 458       | 1,946,272        | (2,137)                        | -0.8%                          |
| Dade      | 010035800            | Baptist Hospital of Miami                                       | All Other        | 4,855   | 25,228    | 341,592,020      | (451,789)                      | -1.6%                          |
| Dade      | 010041200            | Hialeah Hospital  | All Other        | 4,141   | 13,601    | 200,739,008      | 199,423                        | 1.9%                           |
| Dade      | 010042100            | Jackson Memorial Hospital                                       | All Other        | 25,350  | 151,520   | 1,439,390,250    | 1,440,594                      | 0.5%                           |
| Dade      | 010046300            | Mount Sinai Medical Center                                      | All Other        | 3,447   | 16,806    | 148,104,244      | 1,243                          | 0.0%                           |
| Dade      | 010047100            | University of Miami Hospital and Clinics                        | All Other        | 2,308   | 14,557    | 280,877,299      | (113,873)                      | -0.6%                          |
| Dade      | 010049800            | North Shore Medical Center                                      | All Other        | 6,907   | 29,819    | 459,901,267      | 576,529                        | 2.2%                           |
| Dade      | 010053600            | Larkin Community Hospital Palm Springs Campus                   | All Other        | 366     | 2,287     | 17,667,472       | (22,401)                       | -0.8%                          |
| Dade      | 010058700            | South Miami Hospital  | All Other        | 3,800   | 15,881    | 193,947,146      | (1,033,024)                    | -4.8%                          |
| Dade      | 010060900            | Nicklaus Children's Hospital                                    | High Mcaid       | 5,833   | 36,693    | 594,694,692      | (1,105,726)                    | -0.8%                          |
| Dade      | 010062500            | Westchester General Hospital                                    | All Other        | 541     | 2,945     | 12,256,852       | 118,584                        | 6.3%                           |
| Dade      | 010170200            | West Gables Rehabilitation Hospital                             | Rehab            | 140     | 1,823     | 6,051,878        | 109,581                        | 4.9%                           |
| Dade      | 010226100            | Homestead Hospital  | All Other        | 3,354   | 8,645     | 106,565,532      | 49,683                         | 0.4%                           |
| Dade      | 010270900            | Encompass Health Rehabilitation Hospital of Miami               | Rehab            | 27      | 329       | 956,235          | 218,036                        | 58.2%                          |
| Dade      | 010328400            | Sister Emmanuel Hospital  | LTAC             | 6       | 148       | 1,971,630        | (1,437)                        | -1.3%                          |
| Dade      | 010337300            | Select Specialty Hospital - Miami                               | LTAC             | 16      | 459       | 3,223,597        | (7,894)                        | -2.0%                          |
| Dade      | 010354300            | Doctors Hospital  | All Other        | 228     | 1,379     | 19,239,998       | (13,651)                       | -0.9%                          |
| Dade      | 010460400            | Palmetto General Hospital                                       | All Other        | 4,470   | 15,031    | 256,075,186      | 5,496                          | 0.0%                           |
| Dade      | 010960600            | Coral Gables Hospital   | All Other        | 716     | 2,627     | 59,986,637       | (25,442)                       | -1.0%                          |
| Dade      | 011993800            | Kindred Hospital-South Florida-Coral Gables                     | LTAC             | 18      | 1,140     | 9,722,526        | (12,362)                       | -1.2%                          |
| Dade      | 012002200            | St. Catherine's Rehabilitation Hospital                         | Rehab            | 42      | 586       | 1,781,901        | 432,053                        | 78.3%                          |
| Dade      | 012005700            | Larkin Community Hospital                                       | All Other        | 1,070   | 5,541     | 36,145,933       | 391,197                        | 6.2%                           |
| Dade      | 012013800            | Kendall Regional Medical Center                                 | All Other        | 5,557   | 24,983    | 538,241,024      | 54,668                         | 0.2%                           |
| Dade      | 012037500            | Aventura Hospital and Medical Center                            | All Other        | 2,169   | 13,375    | 255,948,784      | 344,326                        | 2.4%                           |
| Dade      | 017707300            | Community Health of South Florida Inc                           | All Other        | 157     | 295       | 423,076          | 23,527                         | 9.9%                           |
| Dade      | 019556500            | Select Specialty Hospital - Miami Lakes                         | LTAC             | 2       | 31        | 248,916          | (400)                          | -1.1%                          |
| Desoto    | 010192300            | Desoto Memorial Hospital  | Rural            | 132     | 261       | 2,783,243        | (2,395)                        | -0.3%                          |
| Duval     | 010064100            | Baptist Medical Center Jacksonville                             | All Other        | 4,066   | 18,571    | 214,278,825      | (92,021)                       | -0.5%                          |
| Duval     | 010064106            | Wolfson Children's Hospital                                     | High Mcaid       | 4,267   | 25,060    | 344,486,999      | (1,126,158)                    | -1.8%                          |
| Duval     | 010067600            | UF Health Jacksonville  | All Other        | 10,243  | 49,816    | 489,152,338      | (814,328)                      | -1.1%                          |
| Duval     | 010072200            | Mayo Clinic   | All Other        | 124     | 857       | 10,967,735       | 43,675                         | 1.2%                           |
| Duval     | 010073100            | Ascension St. Vincent's Riverside                               | All Other        | 3,295   | 12,890    | 132,495,850      | (148,549)                      | -1.1%                          |
| Duval     | 010193100            | Memorial Hospital Jacksonville                                  | All Other        | 4,355   | 19,458    | 365,768,472      | (37,339)                       | -0.2%                          |
| Duval     | 010232600            | Baptist Medical Center - Beaches                                | All Other        | 469     | 1,888     | 22,754,475       | (14,378)                       | -0.8%                          |
| Duval     | 010271700            | Brooks Rehabilitation Hospital                                  | Rehab            | 164     | 1,823     | 9,333,380        | 2,054,541                      | 74.9%                          |
| Duval     | 010373000            | Ascension St. Vincent's Southside                               | All Other        | 1,931   | 5,763     | 48,857,385       | (52,044)                       | -1.1%                          |
| Escambia  | 010074900            | Baptist Hospital  | All Other        | 3,300   | 18,152    | 98,873,132       | 107,658                        | 0.9%                           |



**State of Florida Medicaid - Agency for Health Care Administration (Agency)**  
**Impact of 3M™ APR DRG Version 38 Updates on Simulated Hospital Inpatient Payments**  
**July 2020 Through June 2021 (SFY 2020-2021) Hospital Payment Rates**  
**Simulated Payments and Impacts by Hospital**

| County       | Provider Medicaid ID | Provider Name   | Pricing Category | Stays  | Days    | Trended Charges | Impact on Simulated Payments   |                                |
|--------------|----------------------|---|------------------|--------|---------|-----------------|--------------------------------|--------------------------------|
|              |                      |   |                  |        |         |                 | Total Payment Change (Dollars) | Total Payment Change (Percent) |
|              |                      |   |                  |        |         |                 | (O) = (M) - (G)                | (P) = (O) / (G)                |
| Escambia     | 010076500            | Ascension Sacred Heart Pensacola                              | All Other        | 7,477  | 36,408  | 264,003,651     | (1,312,553)                    | -2.7%                          |
| Escambia     | 010368300            | Select Specialty Hospital - Pensacola                         | LTAC             | 15     | 356     | 2,149,921       | (6,925)                        | -2.7%                          |
| Escambia     | 011321200            | West Florida Hospital   | All Other        | 2,536  | 10,229  | 133,993,871     | 157,334                        | 2.0%                           |
| Flagler      | 010189300            | AdventHealth Palm Coast                                       | Rural            | 484    | 2,296   | 22,892,261      | 20,205                         | 0.4%                           |
| Franklin     | 010080300            | George E Weems Memorial Hospital                              | Rural            | 10     | 19      | 97,103          | (1,337)                        | -2.6%                          |
| Gulf         | 002012700            | Ascension Sacred Heart Gulf                                   | Rural            | 41     | 111     | 534,982         | (18,195)                       | -5.1%                          |
| Hardee       | 010260100            | AdventHealth Wauchula   | Rural            | 25     | 58      | 582,346         | (5,586)                        | -3.2%                          |
| Hendry       | 010086200            | Hendry Regional Medical Center                                | Rural            | 47     | 89      | 800,197         | 7,350                          | 2.0%                           |
| Hernando     | 010087100            | Bayfront Health Brooksville                                   | All Other        | 1,682  | 5,096   | 132,676,244     | (222,329)                      | -3.8%                          |
| Hernando     | 010355100            | Encompass Health Rehabilitation Hospital of Spring Hill       | Rehab            | 6      | 106     | 235,387         | 45,200                         | 56.7%                          |
| Hernando     | 012007300            | Oak Hill Hospital   | All Other        | 2,796  | 8,053   | 174,889,933     | 36,592                         | 0.4%                           |
| Highlands    | 010089700            | Highlands Regional Medical Center                             | All Other        | 798    | 1,980   | 27,955,573      | 19,244                         | 1.2%                           |
| Highlands    | 010090100            | AdventHealth Lake Placid                                      | All Other        | 2,246  | 5,891   | 64,923,026      | (37,302)                       | -0.6%                          |
| Hillsborough | 002576600            | Shriners Hospital for Children - Tampa                        | All Other        | 101    | 204     | 4,549,825       | (19,725)                       | -1.5%                          |
| Hillsborough | 010094300            | AdventHealth Carrollwood                                      | All Other        | 552    | 2,002   | 33,388,921      | (22,945)                       | -0.9%                          |
| Hillsborough | 010097802            | St. Joseph's Hospital   | All Other        | 18,932 | 69,477  | 730,690,380     | (1,435,545)                    | -1.4%                          |
| Hillsborough | 010098600            | South Florida Baptist Hospital                                | All Other        | 1,966  | 4,542   | 52,333,080      | (57,300)                       | -1.0%                          |
| Hillsborough | 010099400            | Tampa General Hospital  | All Other        | 14,034 | 69,388  | 953,025,001     | (1,647,007)                    | -1.5%                          |
| Hillsborough | 010102800            | AdventHealth Tampa  | All Other        | 3,634  | 16,859  | 226,108,338     | (352,647)                      | -2.0%                          |
| Hillsborough | 010230000            | Kindred Hospital-Central Tampa                                | LTAC             | 46     | 1,727   | 16,344,602      | (4,890)                        | -0.3%                          |
| Hillsborough | 010234200            | Kindred Hospital-Bay Area-Tampa                               | LTAC             | 33     | 2,080   | 15,289,763      | (3,268)                        | -0.2%                          |
| Hillsborough | 011279800            | Memorial Hospital of Tampa                                    | All Other        | 636    | 3,528   | 43,968,419      | 75,395                         | 3.6%                           |
| Hillsborough | 011807900            | Brandon Regional Hospital                                     | All Other        | 6,379  | 18,787  | 324,128,802     | (354,035)                      | -1.7%                          |
| Hillsborough | 011984900            | Tampa Community Hospital                                      | All Other        | 539    | 2,658   | 35,474,029      | 65,351                         | 4.1%                           |
| Hillsborough | 011994600            | South Bay Hospital  | All Other        | 241    | 703     | 18,138,595      | (4,522)                        | -0.6%                          |
| Hillsborough | 012032400            | H. Lee Moffitt Cancer Center & Research Institute Hospital    | All Other        | 670    | 5,104   | 67,099,922      | (213,186)                      | -2.3%                          |
| Holmes       | 010103600            | Doctors Memorial Hospital                                     | Rural            | 53     | 139     | 503,628         | 1,676                          | 0.7%                           |
| Indian River | 010104400            | Cleveland Clinic Indian River Hospital                        | All Other        | 2,640  | 8,547   | 50,213,469      | 107,282                        | 1.8%                           |
| Indian River | 012001400            | Steward Sebastian River Medical Center                        | All Other        | 170    | 896     | 18,719,657      | 2,385                          | 0.3%                           |
| Indian River | 012034100            | Encompass Health Rehabilitation Hospital of Treasure Coast    | Rehab            | 15     | 278     | 743,572         | 205,326                        | 96.3%                          |
| Jackson      | 010106100            | Jackson Hospital  | Rural            | 854    | 1,847   | 4,555,796       | 36,451                         | 1.1%                           |
| Lake         | 010107900            | UF Health Leesburg Hospital Inc                               | All Other        | 2,487  | 7,713   | 40,736,779      | (36,373)                       | -0.6%                          |
| Lake         | 010108700            | Orlando Health South Lake Hospital                            | All Other        | 1,781  | 4,645   | 73,561,259      | (38,463)                       | -0.8%                          |
| Lake         | 010109500            | AdventHealth Waterman   | All Other        | 2,055  | 6,962   | 65,694,131      | (80,364)                       | -1.1%                          |
| Lee          | 010110900            | Lee Memorial Hospital   | All Other        | 9,429  | 33,934  | 354,307,278     | (1,724,154)                    | -2.7%                          |
| Lee          | 010111700            | Lehigh Regional Medical Center                                | All Other        | 258    | 800     | 16,842,364      | (12,906)                       | -0.8%                          |
| Lee          | 011134100            | Gulf Coast Medical Center Lee Memorial Health System          | All Other        | 3,323  | 9,662   | 101,408,245     | 18,821                         | 0.2%                           |
| Lee          | 011971700            | Cape Coral Hospital   | All Other        | 2,395  | 5,922   | 60,615,355      | 13,991                         | 0.2%                           |
| Lee          | 013854800            | Select Specialty Hospital - Fort Myers                        | LTAC             | 9      | 250     | 3,117,956       | (4,747)                        | -1.6%                          |
| Leon         | 010113300            | Tallahassee Memorial Hospital                                 | All Other        | 5,837  | 18,490  | 176,322,568     | (657,170)                      | -2.3%                          |
| Leon         | 010374800            | Select Specialty Hospital - Tallahassee                       | LTAC             | 11     | 161     | 1,003,461       | (2,665)                        | -1.6%                          |
| Leon         | 011980600            | Capital Regional Medical Center                               | All Other        | 3,327  | 9,297   | 134,109,899     | 71,307                         | 0.7%                           |
| Leon         | 012033200            | Encompass Health Rehabilitation Hospital of Tallahassee       | Rehab            | 28     | 291     | 510,713         | 114,946                        | 23.7%                          |
| Levy         | 010114100            | Regional General Hospital Williston                           | Rural            | 12     | 33      | 71,774          | 370                            | 0.8%                           |
| Madison      | 010115000            | Madison County Memorial Hospital                              | Rural            | 30     | 67      | 468,715         | (6,496)                        | -3.6%                          |
| Manatee      | 010116800            | Manatee Memorial Hospital                                     | All Other        | 5,025  | 16,232  | 181,756,841     | (13,202)                       | -0.1%                          |
| Manatee      | 010342000            | Lakewood Ranch Medical Center                                 | All Other        | 281    | 2,295   | 21,919,170      | (11,911)                       | -0.9%                          |
| Manatee      | 011021300            | Blake Medical Center  | All Other        | 885    | 6,489   | 145,060,341     | 291,160                        | 3.3%                           |
| Marion       | 008369200            | Encompass Health Rehabilitation Hospital of Ocala             | Rehab            | 9      | 103     | 169,017         | 66,263                         | 52.2%                          |
| Marion       | 010117600            | AdventHealth Ocala  | All Other        | 4,277  | 10,939  | 127,562,341     | (203,279)                      | -1.9%                          |
| Marion       | 010353500            | Kindred Hospital Ocala  | LTAC             | 1      | 27      | 112,031         | (252)                          | -2.1%                          |
| Marion       | 010988600            | Ocala Regional Medical Center                                 | All Other        | 1,854  | 11,225  | 233,973,222     | 76,287                         | 0.5%                           |
| Martin       | 009587500            | Encompass Health Rehab Hospital an Affiliate of Martin Health | Rehab            | 5      | 91      | 218,164         | 38,005                         | 49.6%                          |
| Martin       | 010118400            | Cleveland Clinic Martin North Hospital                        | All Other        | 3,653  | 14,011  | 112,590,301     | (200,763)                      | -2.0%                          |
| Monroe       | 010119200            | Lower Keys Medical Center                                     | Rural            | 733    | 2,304   | 24,894,594      | 149,168                        | 5.0%                           |
| Monroe       | 010121400            | Mariners Hospital   | Rural            | 10     | 43      | 432,036         | (731)                          | -1.3%                          |
| Nassau       | 010123100            | Baptist Medical Center Nassau                                 | Rural            | 764    | 1,654   | 16,553,530      | 16,839                         | 0.5%                           |
| Okaloosa     | 010125700            | Twin Cities Hospital  | All Other        | 123    | 446     | 12,195,863      | (4,722)                        | -1.1%                          |
| Okaloosa     | 010126500            | North Okaloosa Medical Center                                 | All Other        | 1,082  | 3,221   | 65,721,245      | (16,054)                       | -0.5%                          |
| Okaloosa     | 011132500            | Fort Walton Beach Medical Center                              | All Other        | 2,505  | 13,716  | 232,752,271     | 182,844                        | 1.9%                           |
| Okeechobee   | 011975000            | Raulerson Hospital  | Rural            | 569    | 2,084   | 39,457,364      | (72,241)                       | -1.5%                          |
| OOS_Part     | 010199100            | Wiregrass Hospital  | All Other        | 12     | 47      | 75,289          | 426                            | 1.1%                           |
| OOS_Part     | 010202400            | D.W. McMillan Memorial  | All Other        | 2      | 7       | 26,275          | 533                            | 9.9%                           |
| OOS_Part     | 010204100            | Archbold Memorial Hospital                                    | All Other        | 10     | 43      | 176,112         | 1,822                          | 7.1%                           |
| OOS_Part     | 010206700            | Southeast Alabama General                                     | All Other        | 297    | 1,010   | 8,810,704       | 24,242                         | 2.2%                           |
| OOS_Part     | 010207500            | South Georgia Medical Center                                  | All Other        | 45     | 171     | 953,460         | 461                            | 0.3%                           |
| OOS_Part     | 010209100            | Flowers Hospital  | All Other        | 57     | 165     | 3,398,400       | (4,211)                        | -1.4%                          |
| OOS_Part     | 010233400            | Atmore Community Hospital                                     | All Other        | 3      | 11      | 140,354         | 937                            | 11.5%                          |
| OOS_Part     | 010247400            | South Baldwin Hospital  | All Other        | 4      | 35      | 332,652         | (258)                          | -1.3%                          |
| OOS_Part     | 010255500            | Southeast GA Hlth Sys - Brunswick Campus                      | All Other        | 11     | 41      | 362,075         | (1,154)                        | -2.1%                          |
| OOS_Part     | 010281400            | University of South AL Med Cntr                               | All Other        | 17     | 92      | 376,222         | 6,701                          | 5.4%                           |
| OOS_Part     | 010281401            | U.S.A Children's & Women's Hospital                           | All Other        | 20     | 110     | 258,674         | (2,773)                        | -3.1%                          |
| Orange       | 004087600            | Nemours Children's Hospital                                   | High Mcaid       | 2,456  | 14,523  | 272,199,449     | (965,114)                      | -1.7%                          |
| Orange       | 010129000            | AdventHealth Celebration                                      | All Other        | 26,725 | 102,762 | 1,672,939,867   | (2,507,359)                    | -1.8%                          |
| Orange       | 010133800            | Orlando Regional Medical Center                               | All Other        | 25,387 | 106,459 | 1,700,042,623   | (2,197,850)                    | -1.2%                          |
| Orange       | 010135400            | Orlando Health - Health Central Hospital                      | All Other        | 1,828  | 6,907   | 103,263,196     | (22,384)                       | -0.3%                          |
| Orange       | 010339000            | Select Specialty Hospital - Orlando (North Campus)            | LTAC             | 23     | 361     | 5,010,289       | (12,524)                       | -2.6%                          |
| Osceola      | 010138900            | Osceola Regional Medical Center                               | All Other        | 5,631  | 18,877  | 379,530,175     | 159,762                        | 0.7%                           |
| Osceola      | 010346200            | Orlando Health St. Cloud Hospital                             | All Other        | 323    | 963     | 18,946,426      | 1,573                          | 0.1%                           |
| Palm Beach   | 000417000            | Kindred Hospital The Palm Beaches                             | LTAC             | 5      | 442     | 2,534,412       | 2,412                          | 1.1%                           |
| Palm Beach   | 010140100            | Bethesda Hospital East  | All Other        | 5,548  | 21,132  | 166,474,546     | (237,933)                      | -1.5%                          |
| Palm Beach   | 010141900            | Boca Raton Regional Hospital                                  | All Other        | 730    | 3,288   | 23,676,764      | (18,872)                       | -0.6%                          |
| Palm Beach   | 010144300            | Lakeside Medical Center                                       | Rural            | 1,153  | 3,462   | 20,382,327      | 77,638                         | 1.4%                           |
| Palm Beach   | 010146000            | JFK Medical Center  | All Other        | 6,381  | 32,586  | 538,880,833     | 779,423                        | 3.0%                           |
| Palm Beach   | 010148600            | St. Mary's Medical Center                                     | All Other        | 9,111  | 45,062  | 547,593,392     | (732,548)                      | -1.3%                          |
| Palm Beach   | 010152400            | Good Samaritan Medical Center                                 | All Other        | 1,571  | 6,854   | 123,314,154     | (9,636)                        | -0.2%                          |
| Palm Beach   | 010210500            | Palm Beach Gardens Medical Center                             | All Other        | 523    | 3,683   | 83,489,407      | (5,450)                        | -0.1%                          |
| Palm Beach   | 010213000            | Wellington Regional Medical Center                            | All Other        | 2,808  | 10,519  | 125,810,264     | (332,547)                      | -3.4%                          |
| Palm Beach   | 010376400            | Select Specialty Hospital - Palm Beach                        | LTAC             | 15     | 299     | 2,684,841       | 15,576                         | 4.7%                           |
| Palm Beach   | 012009000            | Delray Medical Center   | All Other        | 863    | 8,972   | 181,032,377     | 212,452                        | 2.3%                           |
| Palm Beach   | 012024300            | West Boca Medical Center                                      | All Other        | 2,124  | 7,767   | 105,610,828     | (149,767)                      | -2.1%                          |
| Palm Beach   | 012026000            | Palms West Hospital   | All Other        | 4,243  | 15,314  | 216,096,416     | (202,901)                      | -1.5%                          |
| Palm Beach   | 012029400            | Jupiter Medical Center  | All Other        | 991    | 3,172   | 18,701,127      | 38,384                         | 1.9%                           |

State of Florida Medicaid - Agency for Health Care Administration (Agency)  
 Impact of 3M™ APR DRG Version 38 Updates on Simulated Hospital Inpatient Payments  
 July 2020 Through June 2021 (SFY 2020-2021) Hospital Payment Rates  
 Simulated Payments and Impacts by Hospital

| County     | Provider Medicaid ID | Provider Name   | Pricing Category | Stays | Days   | Trended Charges | Impact on Simulated Payments   |                                |
|------------|----------------------|---|------------------|-------|--------|-----------------|--------------------------------|--------------------------------|
|            |                      |   |                  |       |        |                 | (O) = (M) - (G)                | (P) = (O) / (G)                |
|            |                      |   |                  |       |        |                 | Total Payment Change (Dollars) | Total Payment Change (Percent) |
| Pasco      | 000949600            | AdventHealth Connerston                                       | LTAC             | 17    | 121    | 2,484,267       | (8,261)                        | -2.6%                          |
| Pasco      | 005456800            | AdventHealth Wesley Chapel                                    | All Other        | 729   | 1,806  | 28,737,339      | 2,210                          | 0.1%                           |
| Pasco      | 010149400            | AdventHealth Zephyrhills                                      | All Other        | 1,687 | 4,554  | 54,298,321      | 13,000                         | 0.3%                           |
| Pasco      | 010150800            | Morton Plant North Bay Hospital                               | All Other        | 2,660 | 10,255 | 75,516,855      | 97,200                         | 1.1%                           |
| Pasco      | 010552000            | Medical Center of Trinity                                     | All Other        | 3,626 | 11,000 | 193,456,165     | 36,556                         | 0.4%                           |
| Pasco      | 010959200            | AdventHealth Dade City  | All Other        | 173   | 602    | 14,053,748      | 7,544                          | 0.9%                           |
| Pasco      | 011988100            | Regional Medical Center Bayonet Point                         | All Other        | 1,405 | 7,764  | 214,265,036     | 168,923                        | 1.5%                           |
| Pinellas   | 010151600            | John Hopkins All Children's Hospital                          | High Mcaid       | 4,143 | 27,756 | 528,290,004     | (3,154,458)                    | -2.4%                          |
| Pinellas   | 010154100            | Mease Dunedin Hospital  | All Other        | 999   | 4,716  | 30,083,325      | 45,912                         | 1.4%                           |
| Pinellas   | 010156700            | Bayfront Health St Petersburg                                 | All Other        | 5,795 | 16,168 | 251,144,344     | 453,249                        | 2.7%                           |
| Pinellas   | 010158300            | Morton Plant Hospital   | All Other        | 4,423 | 17,127 | 169,788,985     | 6,222                          | 0.0%                           |
| Pinellas   | 010161300            | AdventHealth North Pinellas                                   | All Other        | 549   | 2,142  | 24,245,800      | 14,093                         | 0.6%                           |
| Pinellas   | 010175300            | Encompass Health Rehabilitation Hospital of Largo             | Rehab            | 39    | 428    | 910,045         | 268,087                        | 49.2%                          |
| Pinellas   | 010276800            | Kindred Hospital-Bay Area-St Petersburg                       | LTAC             | 44    | 1,599  | 15,036,891      | (16,512)                       | -1.1%                          |
| Pinellas   | 010372100            | BayCare Alliant Hospital                                      | LTAC             | 22    | 332    | 6,848,475       | 11,338                         | 1.1%                           |
| Pinellas   | 010823300            | Windmoor Healthcare of Clearwater                             | All Other        | 808   | 3,270  | 9,549,318       | 244,144                        | 14.8%                          |
| Pinellas   | 011519300            | Northside Hospital  | All Other        | 894   | 4,505  | 128,067,286     | 24,444                         | 0.4%                           |
| Pinellas   | 011974100            | Largo Medical Center  | All Other        | 1,972 | 11,430 | 174,504,085     | 322,783                        | 3.2%                           |
| Pinellas   | 012008100            | Mease Countryside Hospital                                    | All Other        | 2,919 | 8,698  | 76,876,088      | (169,411)                      | -2.1%                          |
| Pinellas   | 012010300            | St. Petersburg General Hospital                               | All Other        | 1,286 | 4,122  | 92,786,540      | 19,593                         | 0.4%                           |
| Pinellas   | 012011100            | Palms of Pasadena Hospital                                    | All Other        | 292   | 1,684  | 35,269,891      | 36,313                         | 2.3%                           |
| Pinellas   | 012022700            | St. Anthony's Hospital  | All Other        | 2,956 | 13,745 | 151,805,205     | 121,786                        | 0.9%                           |
| Polk       | 009268300            | Poinciana Medical Center                                      | All Other        | 499   | 1,536  | 47,560,981      | (24,987)                       | -1.3%                          |
| Polk       | 010164800            | Lakeland Regional Medical Center                              | All Other        | 8,695 | 33,119 | 359,670,940     | 152,445                        | 0.4%                           |
| Polk       | 010166400            | AdventHealth Lake Wales                                       | All Other        | 359   | 2,157  | 35,404,332      | (5,794)                        | -0.3%                          |
| Polk       | 010169900            | Winter Haven Hospital   | All Other        | 4,631 | 14,725 | 148,737,801     | (133,844)                      | -1.0%                          |
| Polk       | 010228800            | AdventHealth Heart Of Florida                                 | All Other        | 1,975 | 5,345  | 127,464,666     | 21,987                         | 0.5%                           |
| Polk       | 012041300            | Bartow Regional Medical Center                                | All Other        | 347   | 1,217  | 18,166,016      | (21,571)                       | -1.5%                          |
| Putnam     | 011351400            | Putnam Community Medical Center                               | Rural            | 1,012 | 2,776  | 38,806,799      | (13,392)                       | -0.2%                          |
| Santa Rosa | 010173700            | Jay Hospital  | Rural            | 34    | 134    | 830,192         | (3,006)                        | -1.4%                          |
| Santa Rosa | 010174500            | Santa Rosa Medical Center                                     | All Other        | 942   | 2,974  | 38,626,058      | (5,741)                        | -0.2%                          |
| Sarasota   | 010176100            | Sarasota Memorial Hospital                                    | All Other        | 6,028 | 23,342 | 263,853,414     | (431,025)                      | -1.6%                          |
| Sarasota   | 010253900            | Englewood Community Hospital                                  | All Other        | 131   | 552    | 10,700,274      | (8,911)                        | -1.5%                          |
| Sarasota   | 010356000            | Pam Specialty Hospital of Sarasota                            | LTAC             | 2     | 61     | 619,259         | (3,060)                        | -3.3%                          |
| Sarasota   | 011973300            | Venice Regional Bayfront Health                               | All Other        | 232   | 1,164  | 19,778,504      | 7,391                          | 0.5%                           |
| Sarasota   | 011995400            | Doctor's Hospital of Sarasota                                 | All Other        | 232   | 1,286  | 20,673,788      | (13,245)                       | -1.2%                          |
| Sarasota   | 012038300            | Encompass Health Rehabilitation Hospital of Sarasota          | Rehab            | 16    | 219    | 574,515         | 192,085                        | 87.4%                          |
| Seminole   | 010178800            | Central Florida Regional Hospital                             | All Other        | 1,624 | 6,312  | 119,618,631     | 97,985                         | 1.3%                           |
| Seminole   | 014235500            | Encompass Health Rehabilitation Hospital of Altamonte Springs | Rehab            | 9     | 188    | 364,456         | 114,076                        | 78.9%                          |
| Seminole   | 021094100            | Oviedo Medical Center   | All Other        | 419   | 1,354  | 15,296,497      | 13,109                         | 1.2%                           |
| St. Johns  | 010171100            | Flagler Hospital  | Rural            | 2,699 | 8,823  | 75,759,275      | 44,882                         | 0.3%                           |
| St. Lucie  | 004805200            | Port St. Lucie Hospital                                       | All Other        | 23    | 201    | 404,348         | 3,739                          | 9.3%                           |
| St. Lucie  | 011969500            | Lawwood Regional Medical Center & Heart Institute             | All Other        | 5,033 | 26,587 | 452,742,143     | (88,411)                       | -0.3%                          |
| St. Lucie  | 011997100            | St. Lucie Medical Center                                      | All Other        | 1,920 | 6,055  | 83,619,806      | 74,176                         | 1.6%                           |
| Sumter     | 010317900            | UF Health The Villages Hospital                               | All Other        | 377   | 2,091  | 16,005,961      | (15,346)                       | -0.9%                          |
| Sumter     | 013800200            | Select Specialty Hospital -The Villages Inc                   | LTAC             | 1     | 1      | 123,140         | (251)                          | -2.1%                          |
| Suwannee   | 010179600            | Lake City Medical Center Suwannee Campus                      | Rural            | 131   | 365    | 3,452,072       | (21,603)                       | -2.8%                          |
| Taylor     | 010180000            | Doctor's Memorial Hospital                                    | Rural            | 109   | 274    | 1,384,473       | (12,556)                       | -1.7%                          |
| Union      | 010822700            | Lake Butler Hospital  | Rural            | 4     | 13     | 67,429          | (771)                          | -3.2%                          |
| Volusia    | 010182600            | AdventHealth Fish Memorial                                    | All Other        | 740   | 3,082  | 32,395,191      | (28,353)                       | -0.8%                          |
| Volusia    | 010183400            | AdventHealth New Smyrna Beach                                 | All Other        | 336   | 1,797  | 16,268,856      | (21,921)                       | -1.2%                          |
| Volusia    | 010184200            | Halifax Health Medical Center                                 | All Other        | 5,477 | 26,516 | 169,117,727     | 471,933                        | 2.2%                           |
| Volusia    | 010186900            | AdventHealth Daytona Beach                                    | All Other        | 2,949 | 10,175 | 83,917,316      | (99,126)                       | -1.2%                          |
| Volusia    | 010187700            | AdventHealth Deland   | All Other        | 1,726 | 5,015  | 47,696,567      | 29,370                         | 0.6%                           |
| Volusia    | 016486300            | Select Specialty Hospital - Daytona Beach                     | LTAC             | 6     | 59     | 904,391         | (1,562)                        | -1.8%                          |
| Volusia    | 017009200            | Memorial Health Systems, Inc.                                 | All Other        | 12    | 129    | 836,868         | 6,617                          | 13.0%                          |
| Walton     | 010188500            | Healthmark Regional Medical Center                            | Rural            | 52    | 213    | 812,448         | (1,451)                        | -0.4%                          |
| Walton     | 010323300            | Ascension Sacred Heart Emerald Coast                          | Rural            | 1,591 | 3,915  | 28,050,970      | 151,825                        | 2.7%                           |
| Washington | 010190700            | Northwest Florida Community Hospital                          | Rural            | 71    | 234    | 1,348,627       | (4,465)                        | -0.9%                          |



## Appendix A: Methodology and Data Sources

### Edits and Adjustments that Milliman Applied to Mitigate APR DRG Grouping Errors

We applied the following edits and adjustments to mitigate grouping errors when assigning both version 37 and version 38 APR DRGs:

- We made minor formatting corrections to the primary ICD-10 diagnosis code for 28 claims.
- We adjusted the discharge date (for purposes of APR DRG grouping only) for eight claims where the primary ICD-10 diagnosis code was not valid as of the reported discharge date.
- We edited the patient date of birth to equal the admit date for 43 claims with reported dates of birth after the admit date.
- We adjusted the birth date to equal the admit date for 59 claims where the primary ICD-10 diagnosis code indicated a newborn, but the date of birth was inconsistent with the patient being a newborn.
- We estimated newborn birth weights for 13 claims where the primary ICD-10 diagnosis code indicated a newborn, but there was not a secondary ICD-10 diagnosis code indicating the newborn's birth weight. We estimated birth weights based on the newborn's gestational age and sex, according to assumptions provided by the Agency's vendor.

In addition to the edits and adjustments described above, for 2,116 claims that did not group to a valid version 38 APR DRG, we assumed that the version 38 APR DRGs that are the same as the version 37 APR DRGs. Each of these claims was assigned to a version 37 base APR DRG of "548 - Postpartum and post abortion diagnosis with OR procedure" or "561 - Postpartum and post abortion diagnoses without procedure". Based on the 3M™ version 38 APR DRG Summary of Changes document, it appears that these claims are not grouped to a valid version 38 APR DRG due to an update to the APR DRG grouper logic for the assignment of base APR DRGs 548 and 561. This update to the version 38 APR DRG grouper logic requires a birth outcome and birth delivery procedure to be coded when certain childbirth codes that imply a delivery are billed as the primary ICD-10 diagnosis code<sup>12</sup>:

**"DRG 548 Postpartum and post abortion diagnosis with OR procedure  
DRG 561 Postpartum and post abortion diagnoses without procedure  
DRG 955 Principal diagnosis invalid as discharge diagnosis**

Codes that were moved to **DRG 955 Principal diagnosis invalid as discharge diagnosis** are childbirth codes and imply a delivery. The logic therefore requires a birth outcome and a birth delivery procedure on the record. If either of these two are missing and the principal diagnosis is one of the childbirth codes, then the record will group to DRG 955 Principal diagnosis invalid as discharge diagnosis."

### Edits and Adjustments Applied by the Agency and its Vendor to Claims and Encounter Data

Based on documentation provided to us by the Agency, we understand that in the production of the claims data files that were provided to us, the Agency and its vendor applied a number of edits and adjustments to the FFS claim and managed care encounter records provided by MDA. These adjustments include, but are not limited to, the following:

- Filtering to include only claims for inpatient hospital services provided by general acute care hospitals, rural hospitals, children's specialty hospitals, teaching hospitals, cancer specialty hospitals, rehabilitation specialty hospitals, and long term acute care specialty hospitals
- Removing claims that were identified as duplicates, void records, claims that were later adjusted or resubmitted, system-generated records that "closed out" voided claims, and claims denied by the payer

<sup>12</sup> 3M™ All Patient Refined Diagnosis Related Groups (APR DRG) Summary of Changes version 38.0. Revised 10/2/2020. Retrieved from 3M™ HIS website on October 5, 2020.

This material assumes that the reader is familiar with the State of Florida's Medicaid program, Florida Medicaid benefits, and rate setting principles. The material was prepared solely to provide assistance to the Agency in developing a report reflecting the impact of changes to simulated hospital inpatient reimbursement, by hospital and in the aggregate, resulting from annual updates to the Diagnosis Related Grouping (DRG) grouper version used in setting inpatient hospital rates. It may not be appropriate for other purposes. Milliman does not intend to benefit, and assumes no duty or liability to, other parties who receive this work. This material should only be reviewed in its entirety.

- Developing header records as needed based on line-level detail
- Combining interim claims into a single claim record
- Adjusting Medicaid provider IDs for claims with an accommodation revenue code on one of the lines, but without a mapped provider type of 01 or 16
- Updating provider mappings for two hospitals that were considered part of another hospital in 2018, but were recently re-designated for purposes of Florida Medicaid hospital reimbursement
- Removing managed care encounters where the header managed care plan payment and third party liability amounts are equal to \$0 and where the contract type is not equal to "05" (capitation)
- Removing claims paid under the Global Transplant policy
- Removing claims missing a primary ICD-10 diagnosis code
- Removing claims for services provided by out-of-state non-participating hospitals
- Populating patient dates of birth based on the recipient ID where it was originally missing in the claim extract, based on recipient date of birth information compiled by the Agency

---

This material assumes that the reader is familiar with the State of Florida's Medicaid program, Florida Medicaid benefits, and rate setting principles. The material was prepared solely to provide assistance to the Agency in developing a report reflecting the impact of changes to simulated hospital inpatient reimbursement, by hospital and in the aggregate, resulting from annual updates to the Diagnosis Related Grouping (DRG) grouper version used in setting inpatient hospital rates. It may not be appropriate for other purposes. Milliman does not intend to benefit, and assumes no duty or liability to, other parties who receive this work. This material should only be reviewed in its entirety.



Milliman is among the world's largest providers of actuarial and related products and services. The firm has consulting practices in life insurance and financial services, property & casualty insurance, healthcare, and employee benefits. Founded in 1947, Milliman is an independent firm with offices in major cities around the globe.

[milliman.com](http://milliman.com)

#### CONTACT

**Jim Pettersson**  
[jim.pettersson@milliman.com](mailto:jim.pettersson@milliman.com)

**Luke Roth**  
[luke.roth@milliman.com](mailto:luke.roth@milliman.com)

**Mitch Johnson**  
[mitch.johnson@milliman.com](mailto:mitch.johnson@milliman.com)

**Nick Bauman**  
[nick.bauman@milliman.com](mailto:nick.bauman@milliman.com)